



## Traffic Safety Facts Louisiana 2005-2009



This Report Contains Data From the Following Sources:

- Fatality Data - NCSA Fatality Analysis Reporting System (FARS): 2005-2008 Final File and 2009 Annual Report File (ARF)
- Observed Safety Belt Data - NCSA National Occupant Protection Use Survey (NOPUS) and the Louisiana State Survey
- Vehicle Miles of Travel Data and Motorcycle Registrations - Federal Highway Administration (FHWA)
- Population Data - U.S. Bureau of the Census



## Table of Contents

3. Traffic Safety Performance Measures
4. Fatality Rates: Louisiana , U.S. and Best State
5. Alcohol-Related Fatalities: Louisiana , U.S. and Best State (Old Definition)
6. Alcohol-Impaired Driving Fatalities: Louisiana , U.S. and Best State (New Definition)
7. Fatalities Per 100 Million VMT: Louisiana , U.S.
7. Alcohol-Impaired Driving Fatalities Per 100 Million VMT: Louisiana , U.S.
8. Blood Alcohol Concentration (BAC) Reporting Rates For Drivers/Motorcycle Rider (Operators) Involved in Fatal Crashes: Louisiana , U.S. and Best State
9. Front Seat Passenger Vehicle Occupants, Aged 5 and Over, by Restraint Use: Fatalities and Observed Louisiana , U.S. and Best State
10. Front Seat Passenger Vehicle Occupant Fatalities, Aged 5 and Over, by Percent Restraint Use: Louisiana , U.S.
10. Front Seat Passenger Vehicle Occupants Observed, Aged 5 and Over, by Percent Restraint Use: Louisiana , U.S.
11. Passenger Vehicle Occupant Fatalities Aged 5 and Above by Restraint Use and Lives Saved Estimates
11. Passenger Vehicle Occupant Fatalities Aged Under 5 by Restraint Use and Lives Saved Estimates
12. Motorcyclist Fatalities by Helmet Use and Lives Saved Estimates
13. Fatalities by Person Type
14. Fatalities by Crash Type
15. Motorcyclist Fatalities by Age
15. Motorcyclist Fatalities Per 100,000 Registered Motorcycles
16. Fatalities by Person Type and Race/Hispanic Origin
17. Top 10 Counties for Fatalities
18. Top 10 Counties for Fatalities: Year to Year Percent Change
19. Top 10 Counties for Fatality Rates
20. Motor Vehicle Crash Fatality Maps:  
Total Fatalities, Alcohol-Impaired Driving Fatalities, Single Vehicle Crash Fatalities
21. Motor Vehicle Crash Fatality Maps:  
Large Truck Crash Fatalities, Speeding Involved Fatalities, Roadway Departure Fatalities
22. Motor Vehicle Crash Fatality Maps:  
Intersection Fatalities, Passenger Car Occupants, Light Truck and Van Occupants
23. Motor Vehicle Crash Fatality Maps:  
Motorcyclist Fatalities, Pedestrian Fatalities, Pedestrian Fatalities



## Traffic Safety Performance (Core Outcome) Measures\* For Louisiana

Core Outcome Measures		Year				
		2005	2006	2007	2008	2009
<b>Traffic Fatalities</b>	<b>Total</b>	963	987	993	916	821
	<b>Rural</b>	630	472	520	502	440
	<b>Urban</b>	329	515	473	414	381
	<b>Unknown</b>	4	0	0	0	0
<b>Fatalities Per 100 Million Vehicle Miles Driven**</b>	<b>Total</b>	2.14	2.17	2.19	2.03	
	<b>Rural</b>	3.24	2.40	2.67	2.58	
	<b>Urban</b>	1.29	2.00	1.83	1.61	
<b>Passenger Vehicle Occupant Fatalities (All Seat Positions)</b>	<b>Total</b>	713	751	736	671	579
	<b>Restrained</b>	246	264	239	213	193
	<b>Unrestrained</b>	375	440	437	397	351
	<b>Unknown</b>	92	47	60	61	35
<b>Alcohol-Impaired Driving Fatalities (BAC=.08+)**</b>		334	371	375	339	295
<b>Speeding-Related Fatalities</b>		181	259	256	252	288
<b>Motorcyclist Fatalities</b>	<b>Total</b>	75	95	89	81	103
	<b>Helmeted</b>	55	81	65	49	77
	<b>Unhelmeted</b>	18	12	21	32	25
	<b>Unknown</b>	2	2	3	0	1
<b>Drivers Involved in Fatal Crashes</b>	<b>Total</b>	1,333	1,334	1,302	1,172	1,032
	<b>Aged Under 15</b>	2	1	4	4	2
	<b>Aged 15-20</b>	156	175	175	128	131
	<b>Aged Under 21</b>	158	176	179	132	133
	<b>Aged 21 and Over</b>	1,157	1,132	1,104	1,025	882
	<b>Unknown Age</b>	18	26	19	15	17
<b>Pedestrian Fatalities</b>		113	97	111	107	107

\*These Performance Measures Were Developed By The National Highway Traffic Safety Administration (NHTSA) and the Governors Highway Safety Association (GHSA) (See Publication: DOT HS 811 025)

\*\*2009 State Vehicle Miles Traveled (VMT) Data is Not Yet Available

\*\*\*Based on the BAC of All Involved Drivers and Motorcycle Riders (Operators) Only

[Back To The Table of Contents](#)



### Fatality Rates: Louisiana , U.S. and Best State

Year		Fatalities	Total Vehicle Miles Traveled (Millions)	Fatalities Per 100 Million Vehicle Miles Traveled	Total Population	Fatalities Per 100,000 Population
2005	Louisiana	963	44,979	2.14	4,497,691	21.41
	US	43,510	2,989,430	1.46	295,753,151	14.71
	Best State*			0.80		6.83
2006	Louisiana	987	45,417	2.17	4,240,327	23.28
	US	42,708	3,014,371	1.42	298,593,212	14.30
	Best State*			0.78		6.34
2007	Louisiana	993	45,376	2.19	4,376,122	22.69
	US	41,259	3,032,399	1.36	301,579,895	13.68
	Best State*			0.79		6.54
2008	Louisiana	916	45,091	2.03	4,451,513	20.58
	US	37,423	2,973,509	1.26	304,374,846	12.30
	Best State*			0.67		5.56
2009	Louisiana	821			4,492,076	18.28
	US	33,808	2,979,321	1.13	307,006,550	11.01
	Best State*					4.84

\*State (or States) With Lowest Rates: Lowest VMT and Population Rates Could Be in Different States

2009 National VMT is a Preliminary Estimate and Subject to Change

2009 State Vehicle Miles Traveled (VMT) Data is Not Yet Available

[Back To The Table of Contents](#)



**Fatalities By The Highest Blood Alcohol Concentration (BAC) in the Crash\*\*:**  
**Louisiana , U.S. and Best State**  
**(Old Definition)**

Year		Total Fatalities in all Crashes	Highest BAC level in the Crash					
			BAC = .01+			BAC = .08+		
			Number	Percent	Per 100 Million VMT	Number	Percent	Per 100 Million VMT
2005	Louisiana	963	439	46	0.98	373	39	0.83
	US	43,510	17,590	40	0.59	15,102	35	0.51
	Best State*			14	0.16		12	0.14
2006	Louisiana	987	481	49	1.06	418	42	0.92
	US	42,708	17,738	42	0.59	15,144	35	0.50
	Best State*			24	0.26		20	0.22
2007	Louisiana	993	491	49	1.08	423	43	0.93
	US	41,259	17,158	42	0.57	14,603	35	0.48
	Best State*			24	0.27		21	0.23
2008	Louisiana	916	448	49	0.99	384	42	0.85
	US	37,423	15,449	41	0.52	13,258	35	0.45
	Best State*			21	0.21		16	0.16
2009	Louisiana	821	403	49		331	40	
	US	33,808	14,188	42	0.48	12,233	36	0.41
	Best State*			23			18	

\*State (or States) With Lowest Percents: Lowest Percents Could Be in Different States

\*\*Based on the BAC of All Involved Drivers, Motorcycle Riders (Operators), Pedalcyclists and Pedestrians

2009 National VMT is a Preliminary Estimate and Subject to Change

2009 State Vehicle Miles Traveled (VMT) Data is Not Yet Available

[Back To The Table of Contents](#)



Alcohol-Impaired Driving Fatalities\*\*:  
Louisiana , U.S. and Best State  
(New Definition)

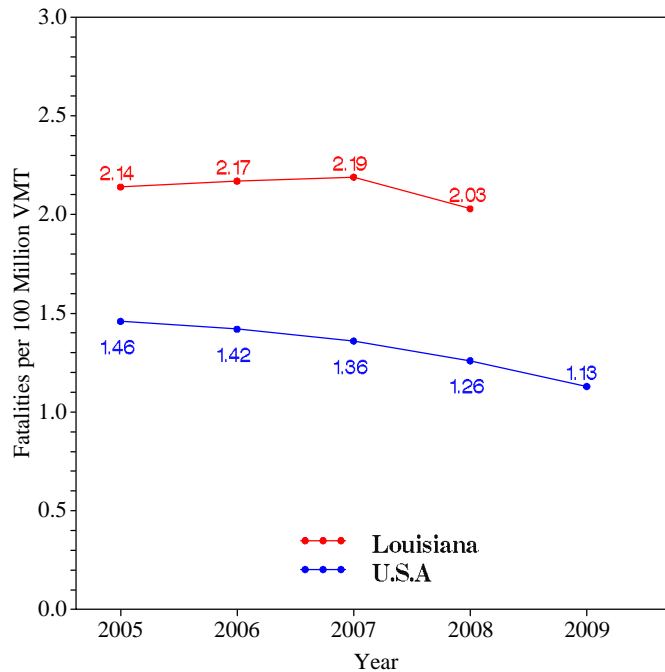
Year		Total Fatalities in all Crashes	Alcohol-Impaired Driving Fatalities (BAC = .08+)		
			Number	Percent	Per 100 Million VMT
2005	Louisiana	963	334	35	0.74
	US	43,510	13,582	31	0.45
	Best State*			12	0.13
2006	Louisiana	987	371	38	0.82
	US	42,708	13,491	32	0.45
	Best State*			18	0.20
2007	Louisiana	993	375	38	0.83
	US	41,259	13,041	32	0.43
	Best State*			19	0.21
2008	Louisiana	916	339	37	0.75
	US	37,423	11,711	31	0.39
	Best State*			16	0.16
2009	Louisiana	821	295	36	
	US	33,808	10,839	32	0.36
	Best State*			16	

\*State (or States) With Lowest Percents: Lowest Percents Could Be in Different States  
 \*\*Based on the BAC of All Involved Drivers and Motorcycle Riders (Operators) Only  
 2009 National VMT is a Preliminary Estimate and Subject to Change  
 2009 State Vehicle Miles Traveled (VMT) Data is Not Yet Available

[Back To The Table of Contents](#)

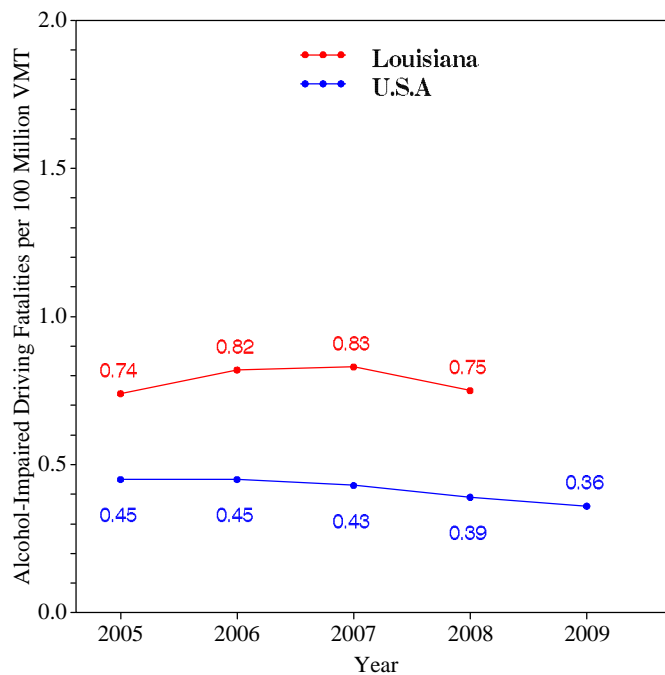


### Fatalities per 100 Million VMT



[Back To The Table of Contents](#)

### Alcohol-Impaired Driving Fatalities per 100 Million VMT



2009 National VMT is a Preliminary Estimate and Subject to Change  
2009 State Vehicle Miles Traveled (VMT) Data is Not Yet Available

[Back To The Table of Contents](#)



**Blood Alcohol Concentration (BAC) Reporting Rates  
For Drivers/Motorcycle Riders (Operators)  
Involved in Fatal Crashes:  
Louisiana , U.S. and Best State**

Year		Surviving Drivers/Motorcycle Riders			Killed Drivers/Motorcycle Riders			Total Drivers/Motorcycle Riders		
		Total	With Blood Alcohol Concentration (BAC) Results Reported to FARS		Total	With Blood Alcohol Concentration (BAC) Results Reported to FARS		Total	With Blood Alcohol Concentration (BAC) Results Reported to FARS	
			Number	Percent		Number	Percent		Number	Percent
2005	Louisiana	713	379	53	620	236	38	1,333	615	46
	US	31,729	7,415	23	27,491	18,773	68	59,220	26,188	44
	Best State*			77			98			84
2006	Louisiana	669	366	55	665	305	46	1,334	671	50
	US	30,498	7,482	25	27,348	18,911	69	57,846	26,393	46
	Best State*			81			99			85
2007	Louisiana	663	397	60	639	367	57	1,302	764	59
	US	29,449	7,631	26	26,570	19,434	73	56,019	27,065	48
	Best State*			82			100			84
2008	Louisiana	591	428	72	581	355	61	1,172	783	67
	US	26,162	7,656	29	24,254	18,415	76	50,416	26,071	52
	Best State*			81			99			85
2009	Louisiana	493	357	72	539	350	65	1,032	707	69
	US	23,432	6,372	27	21,798	15,505	71	45,230	21,877	48
	Best State*			86			97			90

\*State (or States) With Highest Percents: Highest Percents Could Be in Different States

[Back To The Table of Contents](#)



Daytime Front Seat (Outboard Only) Passenger Vehicle Occupants, Aged 5 and Over, by Restraint Use: Fatalities and Observed Louisiana , U.S. and Best State

Table with 4 columns: Year, Location (Louisiana, US, Best State\*), Fatalities - Restrained\*\* (Percent), and Observed - Restrained\*\*\* (Percent). Rows are grouped by year from 2005 to 2009.

\*State With Highest Percent. Fatal Crash and Observed Percents Can Be Different States

\*\*Percent Based Only Where Restraint Use Was Known

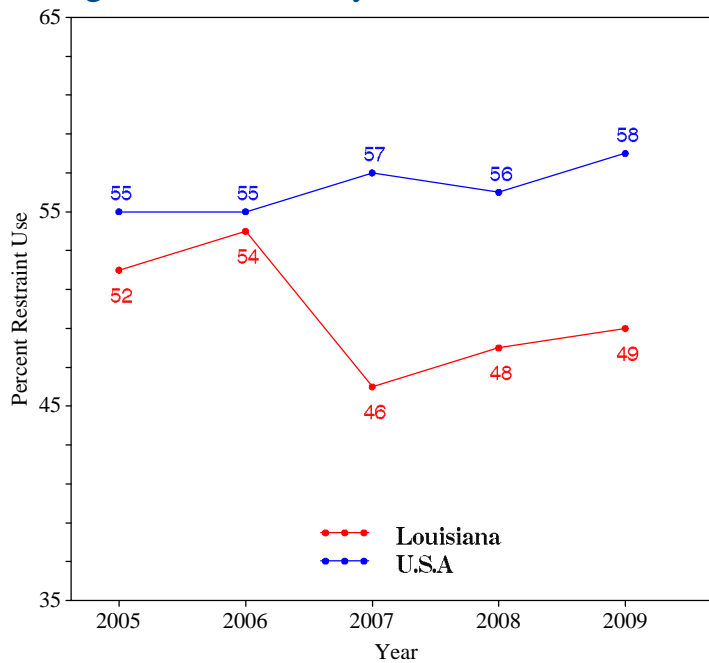
\*\*\*USA Data: National Occupant Protection Use Survey. Louisiana Data: State Survey

Note: The Purpose of this Table is to Compare (as closely as possible) the Use of Restraint Systems by Fatally Injured Occupants with Occupants in all Driving Situations

Back To The Table of Contents



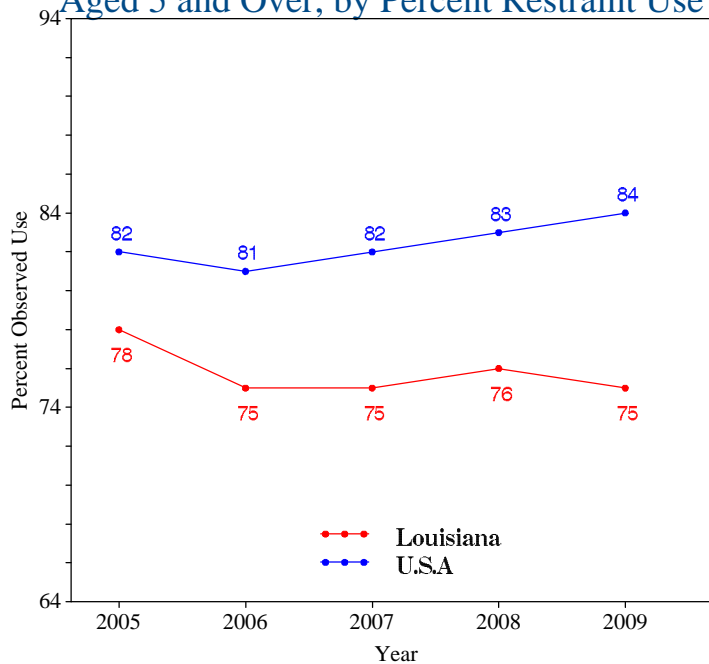
### Daytime Front Seat (Outboard Only) Passenger Vehicle Occupant Fatalities, Aged 5 and Over, by Percent Restraint Use\*



\*Percent Based Only Where Restraint Use Was Known

[Back To The Table of Contents](#)

### Daytime Front Seat (Outboard Only) Passenger Vehicle Occupants Observed, Aged 5 and Over, by Percent Restraint Use\*



\*USA Data: National Occupant Protection Use Survey. Louisiana Data: State Survey

[Back To The Table of Contents](#)



### Passenger Vehicle Occupant Fatalities Age 5 and Above by Restraint Use and Lives Saved Estimates

Year	Fatalities Age 5 and Above					Lives Saved Estimates**	
	Total	Restrained	Unrestrained	Unknown Restraint Use	Percent Known Restrained*	Lives Saved at Current Belt Use	Additional Lives Savable at 100% Belt Usage
2005	700	240	371	89	39	336	147
2006	740	258	437	45	37	350	189
2007	720	233	428	59	35	308	192
2008	663	210	393	60	35	278	156
2009	568	187	347	34	35	250	151

\*Percent Based Only Where Restraint Use Was Known

\*\*Lives Saved Estimates (Sum of columns may not equal other published numbers due to rounding)

[Back To The Table of Contents](#)

### Passenger Vehicle Occupant Fatalities Age 4 and Under by Restraint Use and Lives Saved Estimates

Year	Fatalities Age 4 and Under					Lives Saved Estimates**	
	Total	Restrained	Unrestrained	Unknown Restraint Use	Percent Known Restrained*	Lives Saved at Current Seat Belt and Child Safety Seat Usage	
2005	10	6	2	2	75	9	
2006	10	6	3	1	67	7	
2007	14	5	8	1	38	6	
2008	8	3	4	1	43	4	
2009	10	5	4	1	56	6	

\*Percent Based Only Where Restraint Use Was Known

\*\*Lives Saved Estimates

[Back To The Table of Contents](#)



### Motorcyclist Fatalities by Helmet Use and Lives Saved Estimates

Year	Fatalities					Lives Saved Estimates**	
	Total	Helmeted	Unhelmeted	Unknown Helmet Use	Percent Known Helmeted*	Lives Saved at Current Helmet Use	Additional Lives Savable at 100% Helmet Usage
2005	75	55	18	2	75	34	7
2006	95	81	12	2	87	49	4
2007	89	65	21	3	76	40	8
2008	81	49	32	0	60	29	12
2009	103	77	25	1	75	46	9

\*Percent Based Only Where Helmet Use Was Known

\*\*Lives Saved Estimates (Sum of columns may not equal other published numbers due to rounding)

[Back To The Table of Contents](#)



## Fatalities by Person Type

Person Type		2005		2006		2007		2008		2009	
		#	%*	#	%*	#	%*	#	%*	#	%*
<b>Occupants</b>	<b>Passenger Car</b>	361	37	380	39	357	36	336	37	289	35
	<b>Light Truck - Pickup</b>	212	22	209	21	237	24	171	19	186	23
	<b>Light Truck - Utility</b>	111	12	129	13	119	12	135	15	76	9
	<b>Light Truck - Van</b>	29	3	32	3	22	2	29	3	28	3
	<b>Light Truck - Other</b>	0	0	1	0	1	0	0	0	0	0
	<b>Large Truck</b>	20	2	11	1	26	3	26	3	8	1
	<b>Bus</b>	2	0	0	0	1	0	0	0	0	0
	<b>Other/Unknown Occupants</b>	15	2	8	1	7	1	15	2	9	1
	<b>Total Occupants</b>	750	78	770	78	770	78	712	78	596	73
<b>Motorcyclists</b>	<b>Total Motorcyclists</b>	75	8	95	10	89	9	81	9	103	13
<b>Nonoccupants</b>	<b>Pedestrian</b>	113	12	97	10	111	11	107	12	107	13
	<b>Bicyclist and Other Cyclist</b>	21	2	24	2	23	2	11	1	13	2
	<b>Other/Unknown Nonoccupants</b>	4	0	1	0	0	0	5	1	2	0
	<b>Total Nonoccupants</b>	138	14	122	12	134	13	123	13	122	15
<b>Total</b>	<b>Total</b>	963	100	987	100	993	100	916	100	821	100

\*Sum of Percents May Not = 100 Due to Individual Cell Rounding

[Back To The Table of Contents](#)



### Fatalities by Crash Type

Crash Type	2005	2006	2007	2008	2009
<b>Total Fatalities (All Crashes)*</b>	963	987	993	916	821
<b>- (1) Single Vehicle</b>	527	575	588	554	498
<b>- (2) Involving a Large Truck</b>	122	104	121	111	83
<b>- (3) Involving Speeding</b>	181	259	256	252	288
<b>- (4) Involving a Rollover</b>	270	343	333	312	260
<b>- (5) Involving a Roadway Departure</b>	531	599	576	539	492
<b>- (6) Involving an Intersection (or Intersection Related)</b>	187	162	176	153	123

(1) Crash Involved Only One Coded Vehicle

(2) Crash Involved at Least One Large Truck

(3) Crash Involved at Least One Vehicle Speeding

(4) Crash Involved at Least One Vehicle That Rolled Over

(5) Crash Involved at Least One Vehicle That Departed the Roadway (FHWA Definition)

(6) Crash Occured Within an Intersection or Within the Approach to an Intersection

\*A Fatality Can Be in More Than One Category. Therefore Sum of the Individual Cells Will Not Equal the Total Due to Double Counting

[Back To The Table of Contents](#)



### Motorcyclist Fatalities by Age

Year	Age						Total
	<20	20-29	30-39	40-49	50-59	>59	
2005	1	22	16	17	11	8	75
2006	2	34	17	25	13	4	95
2007	3	23	29	21	11	2	89
2008	5	22	16	16	15	7	81
2009	5	28	24	21	18	7	103

[Back To The Table of Contents](#)

### Motorcyclist Fatalities Per 100,000 Registered Motorcycles

Year	Motorcyclist Fatalities	Total Motorcycle Registrations*	Motorcyclist Fatalities Per 100,000 Motorcycle Registrations
2005	75	55,071	136.2
2006	95	61,128	155.4
2007	89	64,604	137.8
2008	81	69,088	117.2
2009	103		

\*Data Source: FHWA

\*2009 Motorcycle Registrations are Not Yet Available

[Back To The Table of Contents](#)



### Fatalities by Person Type and Race/Hispanic Origin

Person Type by Race/Hispanic Origin		2005	2006	2007	2008
<b>Occupants (All Vehicle Types)</b>	<b>Hispanic</b>	9	12	18	31
	<b>White Non-Hispanic</b>	464	3	6	3
	<b>Black, Non-Hispanic</b>	170	192	211	204
	<b>American Indian, Non-Hispanic/Unknown</b>	0	1	2	1
	<b>Asian, Non-Hispanic/Unknown</b>	0	1	0	1
	<b>All Other Non-Hispanic or Race</b>	50	647	607	540
	<b>Unknown Race and Unknown Hispanic</b>	132	9	15	13
	<b>Total</b>	825	865	859	793
<b>Non-Occupants (Pedestrians, Pedalcyclists and Other/Unknown NonOccupants)</b>					
	<b>Hispanic</b>	1	4	10	7
	<b>White Non-Hispanic</b>	55	0	0	1
	<b>Black, Non-Hispanic</b>	49	38	62	51
	<b>American Indian, Non-Hispanic/Unknown</b>	0	1	2	0
	<b>Asian, Non-Hispanic/Unknown</b>	0	0	0	0
	<b>All Other Non-Hispanic or Race</b>	6	78	55	64
	<b>Unknown Race and Unknown Hispanic</b>	27	1	5	0
<b>Total</b>	138	122	134	123	
<b>Total</b>	963	987	993	916	

2009 Race/Hispanic Origin Data is Not Yet Complete

[Back To The Table of Contents](#)



### 5 Year Trend For The Top 10 Counties of 2009 - Fatalities

Counties by 2009 Ranking		Fatalities					Percent of Total				
		2005	2006	2007	2008	2009	2005	2006	2007	2008	2009
1	East Baton Rouge Parish	56	55	62	54	52	6	6	6	6	6
2	Orleans Parish	31	22	41	37	43	3	2	4	4	5
3	St. Tammany Parish	53	57	50	40	43	6	6	5	4	5
4	Caddo Parish	46	38	53	34	39	5	4	5	4	5
5	Calcasieu Parish	47	67	37	50	38	5	7	4	5	5
6	Tangipahoa Parish	53	43	40	39	37	6	4	4	4	5
7	Terrebonne Parish	19	28	34	29	33	2	3	3	3	4
8	Rapides Parish	22	19	23	20	32	2	2	2	2	4
9	Lafayette Parish	38	45	39	40	31	4	5	4	4	4
10	Jefferson Parish	39	55	44	31	29	4	6	4	3	4
<b>Sub Total 1.*</b>	<b>Top Ten Counties</b>	420	450	431	402	377	44	46	43	44	46
<b>Sub Total 2.**</b>	<b>All Other Counties</b>	543	537	562	514	444	56	54	57	56	54
<b>Total</b>	<b>All Counties</b>	963	987	993	916	821	100	100	100	100	100

\*This Sub Total is the Total for the Top Ten Counties

\*\*This Sub Total is the Total for all Counties Outside the Top Ten

[Back To The Table of Contents](#)



### 5 Year Trend For The Top 10 Counties of 2009 - Fatalities Year to Year Percent Change

Counties by 2009 Ranking		Fatalities					Percent Change From Previous Year			
		2005	2006	2007	2008	2009	2006	2007	2008	2009
1	East Baton Rouge Parish	56	55	62	54	52	-2	13	-13	-4
2	Orleans Parish	31	22	41	37	43	-29	86	-10	16
3	St. Tammany Parish	53	57	50	40	43	8	-12	-20	8
4	Caddo Parish	46	38	53	34	39	-17	39	-36	15
5	Calcasieu Parish	47	67	37	50	38	43	-45	35	-24
6	Tangipahoa Parish	53	43	40	39	37	-19	-7	-3	-5
7	Terrebonne Parish	19	28	34	29	33	47	21	-15	14
8	Rapides Parish	22	19	23	20	32	-14	21	-13	60
9	Lafayette Parish	38	45	39	40	31	18	-13	3	-23
10	Jefferson Parish	39	55	44	31	29	41	-20	-30	-6
<b>Sub Total 1.*</b>	<b>Top Ten Counties</b>	420	450	431	402	377	7	-4	-7	-6
<b>Sub Total 2.**</b>	<b>All Other Counties</b>	543	537	562	514	444	-1	5	-9	-14
<b>Total</b>	<b>All Counties</b>	963	987	993	916	821	2	1	-8	-10

\*This Sub Total is the Total for the Top Ten Counties

\*\*This Sub Total is the Total for all Counties Outside the Top Ten

[Back To The Table of Contents](#)



## 5 Year Trend For The Top 10 Counties of 2009 - Fatality Rates

Median Rate for all U.S. Counties: 18.23

Counties by 2009 Ranking		Fatalities Per 100,000 Population				
		2005	2006	2007	2008	2009
1	Red River Parish	10.86	21.79	10.94	66.22	88.86
2	West Baton Rouge Parish	65.02	76.64	70.68	26.51	75.09
3	Iberville Parish	21.75	45.61	42.53	36.48	61.53
4	St. Helena Parish	39.33	84.44	75.61	85.22	56.87
5	Natchitoches Parish	15.47	20.60	41.07	28.17	50.95
6	Pointe Coupee Parish	78.00	26.78	44.55	35.50	49.00
7	Catahoula Parish	29.26	28.84	76.54	47.38	47.80
8	Union Parish	35.19	17.49	30.83	30.89	44.28
9	La Salle Parish	28.80	0.00	35.73	14.27	42.97
10	Bienville Parish	26.70	46.91	40.32	40.73	40.74
	<b>Sub Rate 1.*</b> <i>Top Ten Counties</i>	53.43	51.97	62.44	51.64	55.01
	<b>Sub Rate 2.**</b> <i>All Other Counties</i>	19.07	21.48	21.20	19.05	16.58
	<b>Total Rate</b> <i>All Counties</i>	21.41	23.28	22.69	20.58	18.28

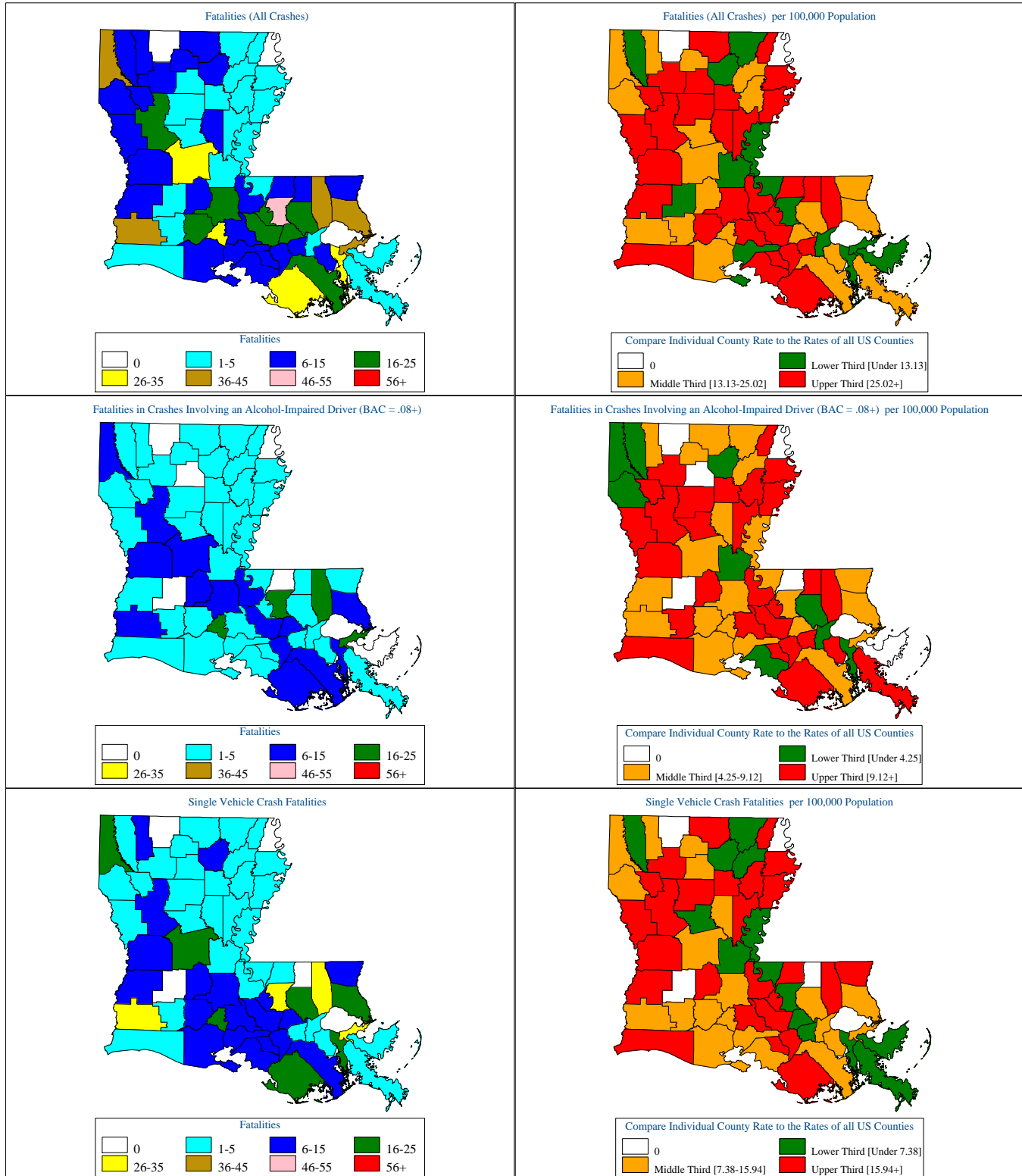
\*This Sub Rate is the Rate for the Top Ten Counties

\*\*This Sub Rate is the Rate for all Counties Outside the Top Ten

[Back To The Table of Contents](#)



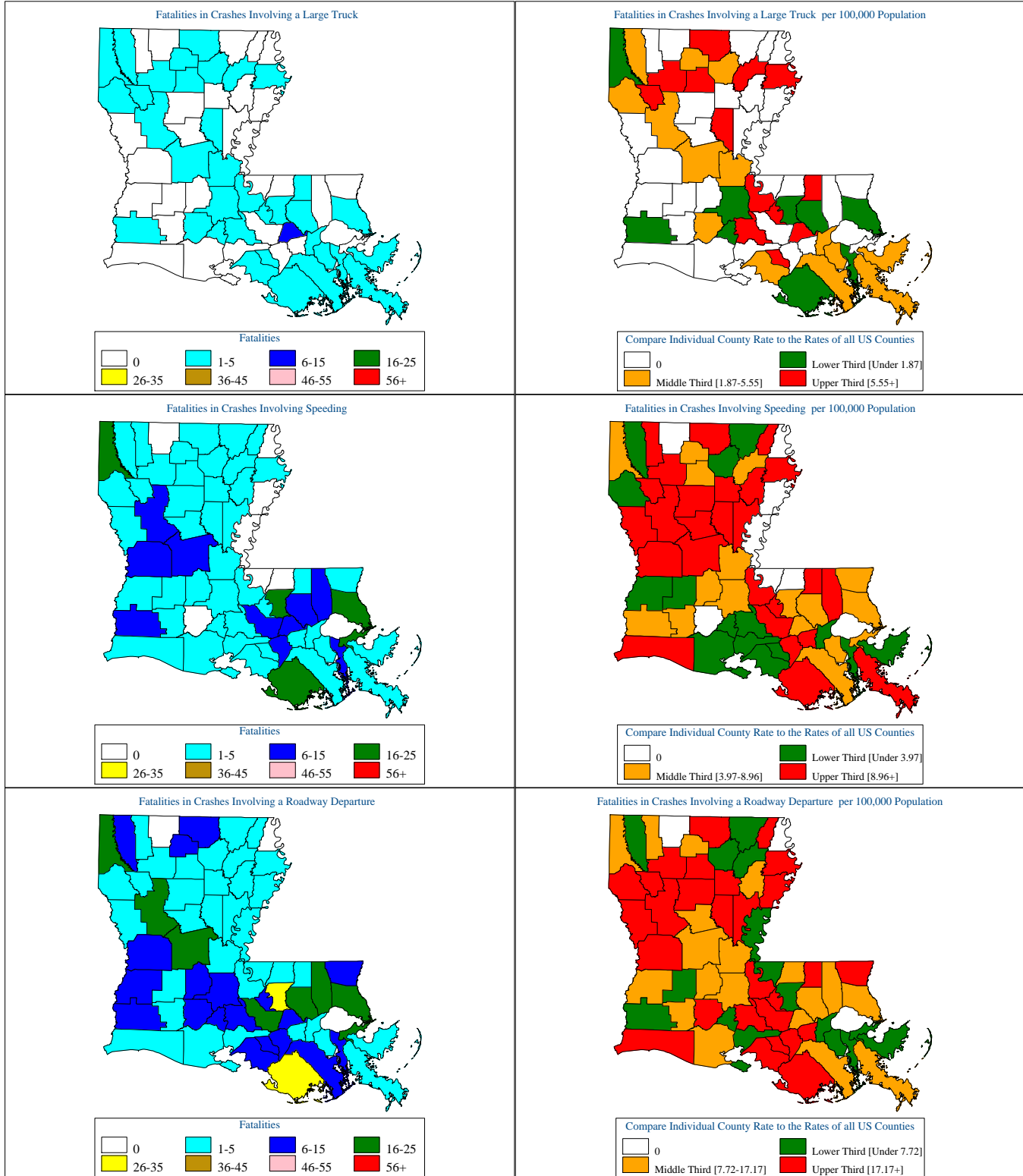
### Louisiana Motor Vehicle Crash Fatality Maps for 2009



[Back To The Table of Contents](#)



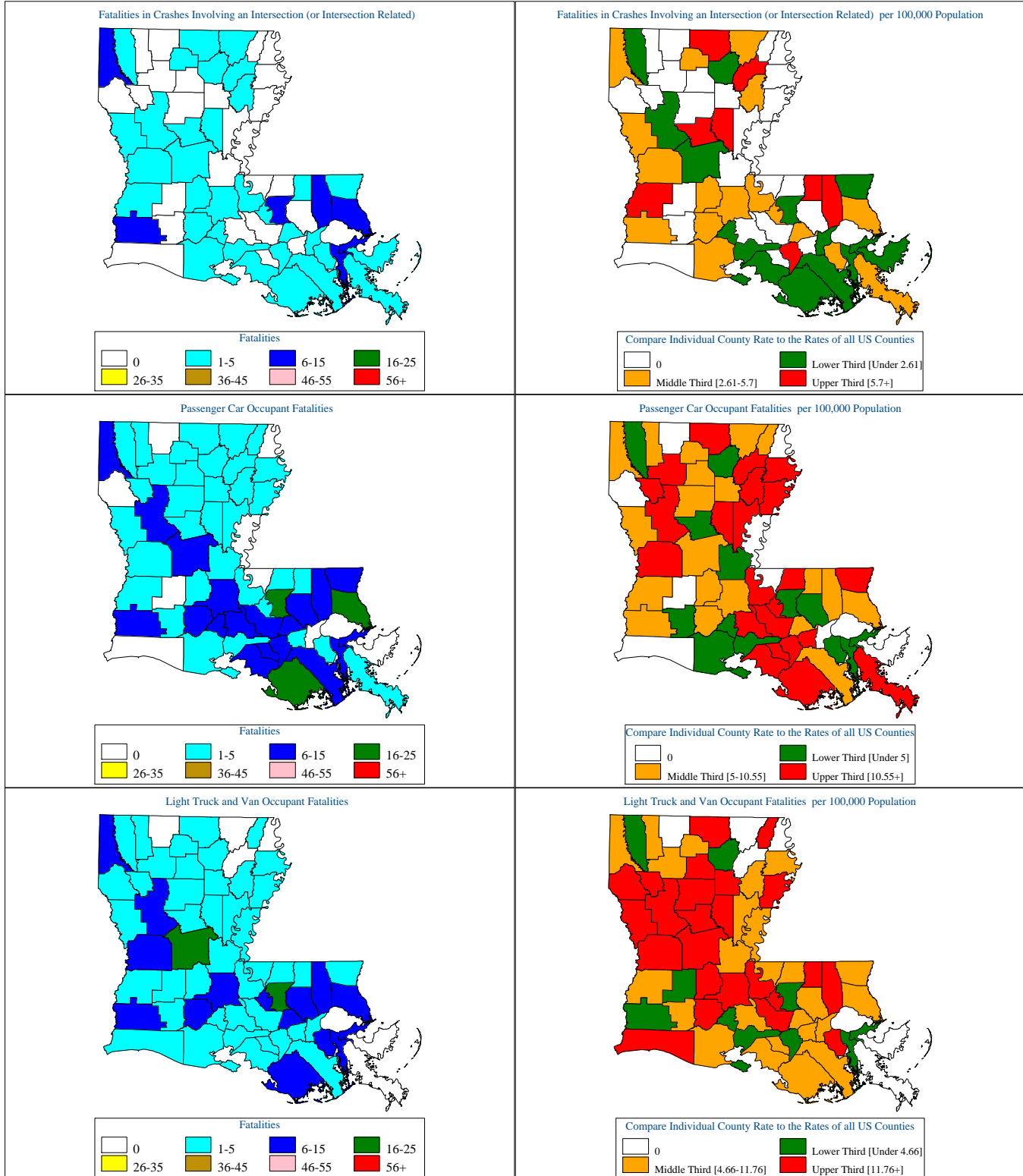
### Louisiana Motor Vehicle Crash Fatality Maps for 2009



[Back To The Table of Contents](#)



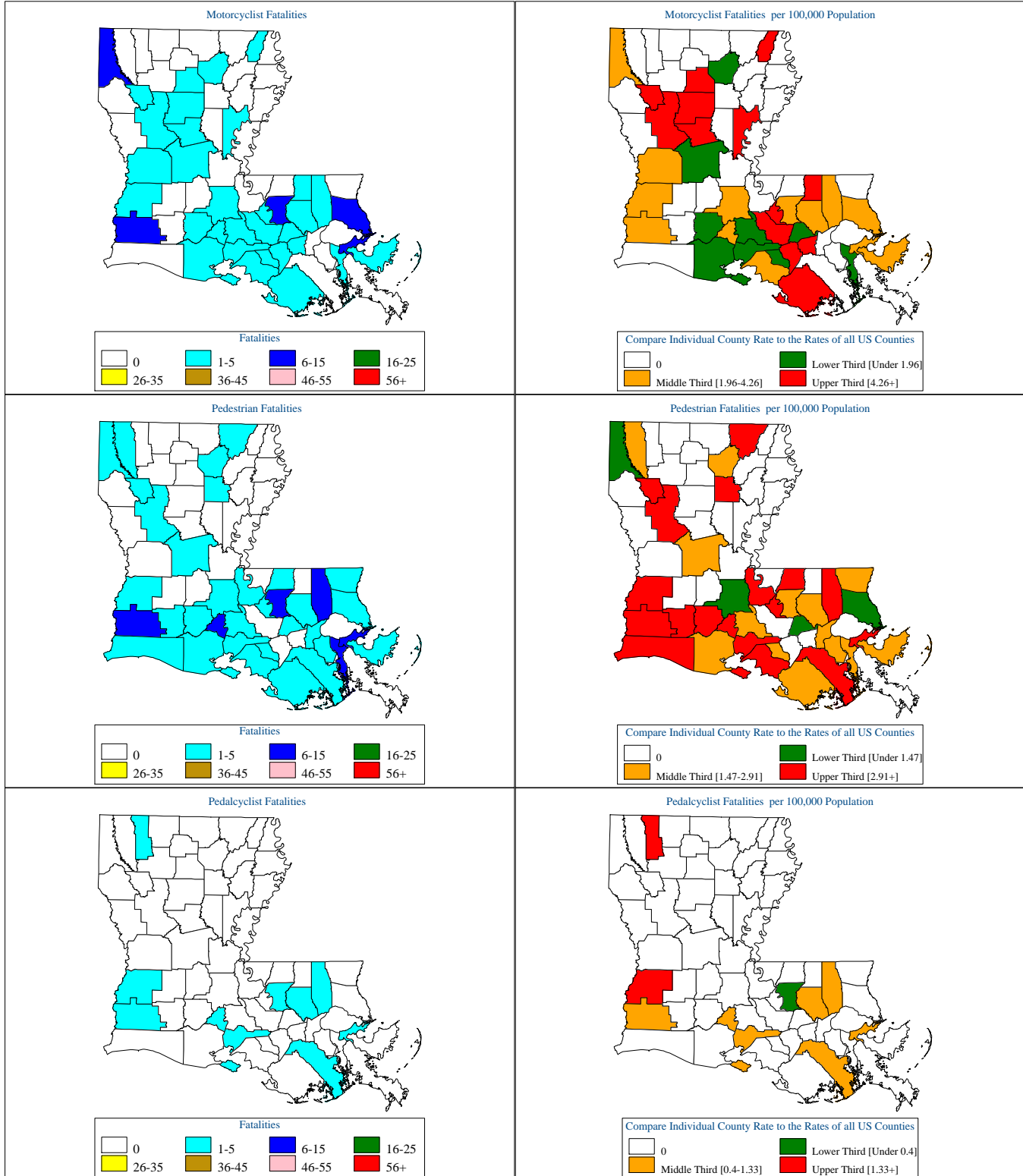
### Louisiana Motor Vehicle Crash Fatality Maps for 2009



[Back To The Table of Contents](#)



### Louisiana Motor Vehicle Crash Fatality Maps for 2009



[Back To The Table of Contents](#)