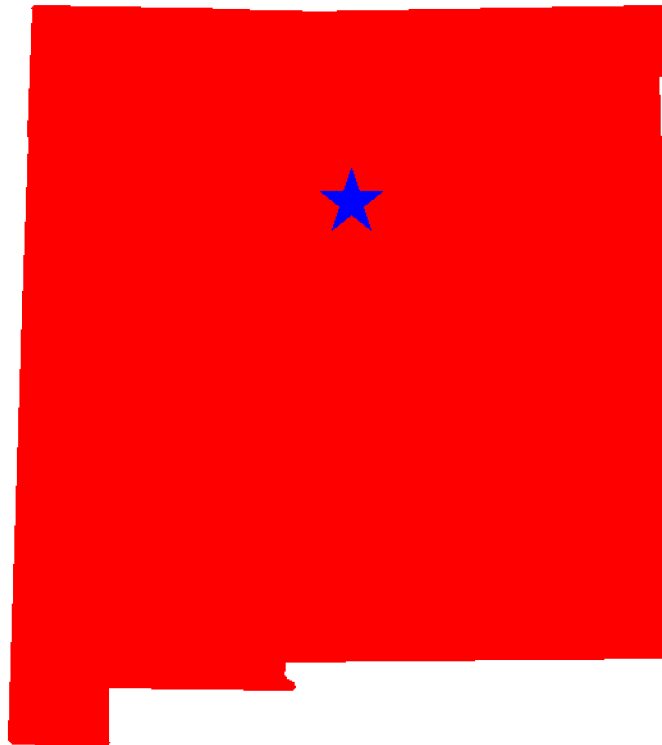




Traffic Safety Facts New Mexico 2005-2009



This Report Contains Data From the Following Sources:

- Fatality Data - NCSA Fatality Analysis Reporting System (FARS): 2005-2008 Final File and 2009 Annual Report File (ARF)
- Observed Safety Belt Data - NCSA National Occupant Protection Use Survey (NOPUS) and the New Mexico State Survey
- Vehicle Miles of Travel Data and Motorcycle Registrations - Federal Highway Administration (FHWA)
- Population Data - U.S. Bureau of the Census



Table of Contents

3. Traffic Safety Performance Measures
4. Fatality Rates: New Mexico , U.S. and Best State
5. Alcohol-Related Fatalities: New Mexico , U.S. and Best State (Old Definition)
6. Alcohol-Impaired Driving Fatalities: New Mexico , U.S. and Best State (New Definition)
7. Fatalities Per 100 Million VMT: New Mexico , U.S.
7. Alcohol-Impaired Driving Fatalities Per 100 Million VMT: New Mexico , U.S.
8. Blood Alcohol Concentration (BAC) Reporting Rates For Drivers/Motorcycle Rider (Operators) Involved in Fatal Crashes: New Mexico , U.S. and Best State
9. Front Seat Passenger Vehicle Occupants, Aged 5 and Over, by Restraint Use: Fatalities and Observed New Mexico , U.S. and Best State
10. Front Seat Passenger Vehicle Occupant Fatalities, Aged 5 and Over, by Percent Restraint Use: New Mexico , U.S.
10. Front Seat Passenger Vehicle Occupants Observed, Aged 5 and Over, by Percent Restraint Use: New Mexico , U.S.
11. Passenger Vehicle Occupant Fatalities Aged 5 and Above by Restraint Use and Lives Saved Estimates
11. Passenger Vehicle Occupant Fatalities Aged Under 5 by Restraint Use and Lives Saved Estimates
12. Motorcyclist Fatalities by Helmet Use and Lives Saved Estimates
13. Fatalities by Person Type
14. Fatalities by Crash Type
15. Motorcyclist Fatalities by Age
15. Motorcyclist Fatalities Per 100,000 Registered Motorcycles
16. Fatalities by Person Type and Race/Hispanic Origin
17. Top 10 Counties for Fatalities
18. Top 10 Counties for Fatalities: Year to Year Percent Change
19. Top 10 Counties for Fatality Rates
20. Motor Vehicle Crash Fatality Maps:
Total Fatalities, Alcohol-Impaired Driving Fatalities, Single Vehicle Crash Fatalities
21. Motor Vehicle Crash Fatality Maps:
Large Truck Crash Fatalities, Speeding Involved Fatalities, Roadway Departure Fatalities
22. Motor Vehicle Crash Fatality Maps:
Intersection Fatalities, Passenger Car Occupants, Light Truck and Van Occupants
23. Motor Vehicle Crash Fatality Maps:
Motorcyclist Fatalities, Pedestrian Fatalities, Pedestrian Fatalities



Traffic Safety Performance (Core Outcome) Measures* For New Mexico

Core Outcome Measures		Year				
		2005	2006	2007	2008	2009
Traffic Fatalities	Total	488	484	413	366	361
	Rural	353	363	302	265	258
	Urban	134	120	111	101	103
	Unknown	1	1	0	0	0
Fatalities Per 100 Million Vehicle Miles Driven**	Total	2.04	1.88	1.54	1.39	
	Rural	2.68	2.50	1.94	1.78	
	Urban	1.24	1.06	0.98	0.89	
Passenger Vehicle Occupant Fatalities (All Seat Positions)	Total	365	343	277	250	261
	Restrained	175	154	107	119	137
	Unrestrained	183	171	163	128	124
	Unknown	7	18	7	3	0
Alcohol-Impaired Driving Fatalities (BAC=.08+)**		149	136	132	105	114
Speeding-Related Fatalities		165	173	159	70	69
Motorcyclist Fatalities	Total	38	43	50	49	40
	Helmeted	6	9	9	2	1
	Unhelmeted	31	32	41	47	39
	Unknown	1	2	0	0	0
Drivers Involved in Fatal Crashes	Total	582	572	496	445	454
	Aged Under 15	5	2	0	0	0
	Aged 15-20	74	69	61	57	55
	Aged Under 21	79	71	61	57	55
	Aged 21 and Over	482	485	422	380	394
	Unknown Age	21	16	13	8	5
Pedestrian Fatalities		61	69	52	39	39

*These Performance Measures Were Developed By The National Highway Traffic Safety Administration (NHTSA) and the Governors Highway Safety Association (GHSA) (See Publication: DOT HS 811 025)

**2009 State Vehicle Miles Traveled (VMT) Data is Not Yet Available

***Based on the BAC of All Involved Drivers and Motorcycle Riders (Operators) Only

[Back To The Table of Contents](#)



Fatality Rates: New Mexico , U.S. and Best State

Year		Fatalities	Total Vehicle Miles Traveled (Millions)	Fatalities Per 100 Million Vehicle Miles Traveled	Total Population	Fatalities Per 100,000 Population
2005	New Mexico	488	23,966	2.04	1,916,538	25.46
	US	43,510	2,989,430	1.46	295,753,151	14.71
	Best State*			0.80		6.83
2006	New Mexico	484	25,787	1.88	1,942,608	24.91
	US	42,708	3,014,371	1.42	298,593,212	14.30
	Best State*			0.78		6.34
2007	New Mexico	413	26,850	1.54	1,968,731	20.98
	US	41,259	3,032,399	1.36	301,579,895	13.68
	Best State*			0.79		6.54
2008	New Mexico	366	26,279	1.39	1,986,763	18.42
	US	37,423	2,973,509	1.26	304,374,846	12.30
	Best State*			0.67		5.56
2009	New Mexico	361			2,009,671	17.96
	US	33,808	2,979,321	1.13	307,006,550	11.01
	Best State*					4.84

*State (or States) With Lowest Rates: Lowest VMT and Population Rates Could Be in Different States

2009 National VMT is a Preliminary Estimate and Subject to Change

2009 State Vehicle Miles Traveled (VMT) Data is Not Yet Available

[Back To The Table of Contents](#)



Fatalities By The Highest Blood Alcohol Concentration (BAC) in the Crash**:
New Mexico , U.S. and Best State
(Old Definition)

Year		Total Fatalities in all Crashes	Highest BAC level in the Crash					
			BAC = .01+			BAC = .08+		
			Number	Percent	Per 100 Million VMT	Number	Percent	Per 100 Million VMT
2005	New Mexico	488	193	40	0.81	177	36	0.74
	US	43,510	17,590	40	0.59	15,102	35	0.51
	Best State*			14	0.16		12	0.14
2006	New Mexico	484	187	39	0.73	164	34	0.64
	US	42,708	17,738	42	0.59	15,144	35	0.50
	Best State*			24	0.26		20	0.22
2007	New Mexico	413	175	42	0.65	157	38	0.58
	US	41,259	17,158	42	0.57	14,603	35	0.48
	Best State*			24	0.27		21	0.23
2008	New Mexico	366	139	38	0.53	126	34	0.48
	US	37,423	15,449	41	0.52	13,258	35	0.45
	Best State*			21	0.21		16	0.16
2009	New Mexico	361	147	41		131	36	
	US	33,808	14,188	42	0.48	12,233	36	0.41
	Best State*			23			18	

*State (or States) With Lowest Percents: Lowest Percents Could Be in Different States

**Based on the BAC of All Involved Drivers, Motorcycle Riders (Operators), Pedalcyclists and Pedestrians
2009 National VMT is a Preliminary Estimate and Subject to Change
2009 State Vehicle Miles Traveled (VMT) Data is Not Yet Available

[Back To The Table of Contents](#)



Alcohol-Impaired Driving Fatalities**:
New Mexico , U.S. and Best State
(New Definition)

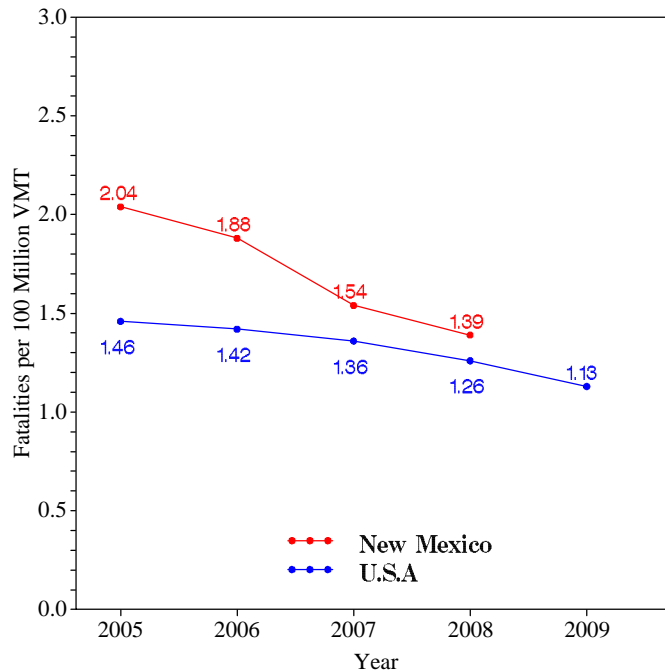
Year		Total Fatalities in all Crashes	Alcohol-Impaired Driving Fatalities (BAC = .08+)		
			Number	Percent	Per 100 Million VMT
2005	New Mexico	488	149	31	0.62
	US	43,510	13,582	31	0.45
	Best State*			12	0.13
2006	New Mexico	484	136	28	0.53
	US	42,708	13,491	32	0.45
	Best State*			18	0.20
2007	New Mexico	413	132	32	0.49
	US	41,259	13,041	32	0.43
	Best State*			19	0.21
2008	New Mexico	366	105	29	0.40
	US	37,423	11,711	31	0.39
	Best State*			16	0.16
2009	New Mexico	361	114	32	
	US	33,808	10,839	32	0.36
	Best State*			16	

*State (or States) With Lowest Percents: Lowest Percents Could Be in Different States
 **Based on the BAC of All Involved Drivers and Motorcycle Riders (Operators) Only
 2009 National VMT is a Preliminary Estimate and Subject to Change
 2009 State Vehicle Miles Traveled (VMT) Data is Not Yet Available

[Back To The Table of Contents](#)

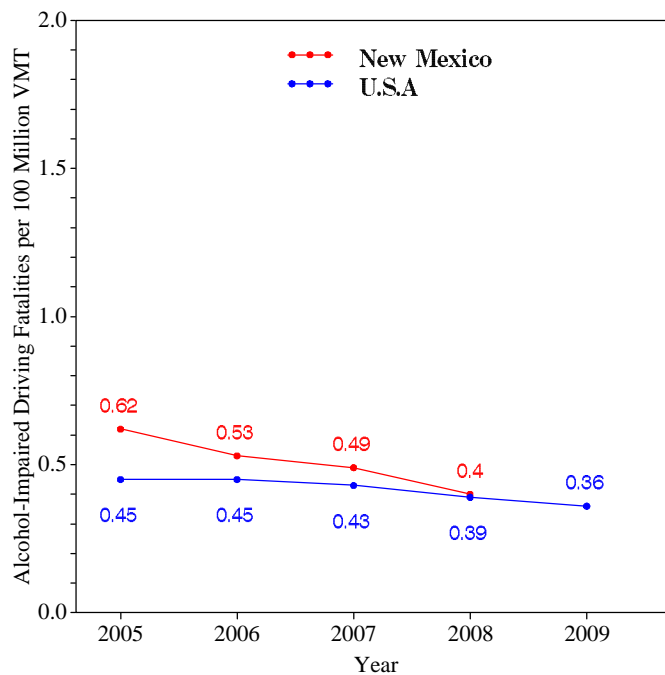


Fatalities per 100 Million VMT



[Back To The Table of Contents](#)

Alcohol-Impaired Driving Fatalities per 100 Million VMT



2009 National VMT is a Preliminary Estimate and Subject to Change
2009 State Vehicle Miles Traveled (VMT) Data is Not Yet Available

[Back To The Table of Contents](#)



**Blood Alcohol Concentration (BAC) Reporting Rates
For Drivers/Motorcycle Riders (Operators)
Involved in Fatal Crashes:
New Mexico , U.S. and Best State**

Year		Surviving Drivers/Motorcycle Riders			Killed Drivers/Motorcycle Riders			Total Drivers/Motorcycle Riders		
		Total	With Blood Alcohol Concentration (BAC) Results Reported to FARS		Total	With Blood Alcohol Concentration (BAC) Results Reported to FARS		Total	With Blood Alcohol Concentration (BAC) Results Reported to FARS	
			Number	Percent		Number	Percent		Number	Percent
2005	New Mexico	305	106	35	277	255	92	582	361	62
	US	31,729	7,415	23	27,491	18,773	68	59,220	26,188	44
	Best State*			77			98			84
2006	New Mexico	305	116	38	267	247	93	572	363	63
	US	30,498	7,482	25	27,348	18,911	69	57,846	26,393	46
	Best State*			81			99			85
2007	New Mexico	260	106	41	236	223	94	496	329	66
	US	29,449	7,631	26	26,570	19,434	73	56,019	27,065	48
	Best State*			82			100			84
2008	New Mexico	241	168	70	204	187	92	445	355	80
	US	26,162	7,656	29	24,254	18,415	76	50,416	26,071	52
	Best State*			81			99			85
2009	New Mexico	233	200	86	221	208	94	454	408	90
	US	23,432	6,372	27	21,798	15,505	71	45,230	21,877	48
	Best State*			86			97			90

*State (or States) With Highest Percents: Highest Percents Could Be in Different States

[Back To The Table of Contents](#)



Daytime Front Seat (Outboard Only) Passenger Vehicle Occupants, Aged 5 and Over, by Restraint Use: Fatalities and Observed New Mexico , U.S. and Best State

Table with columns: Year, State, Fatalities - Restrained**, Observed - Restrained***. Rows include years 2005-2009 and states New Mexico, US, and Best State*.

*State With Highest Percent. Fatal Crash and Observed Percents Can Be Different States

**Percent Based Only Where Restraint Use Was Known

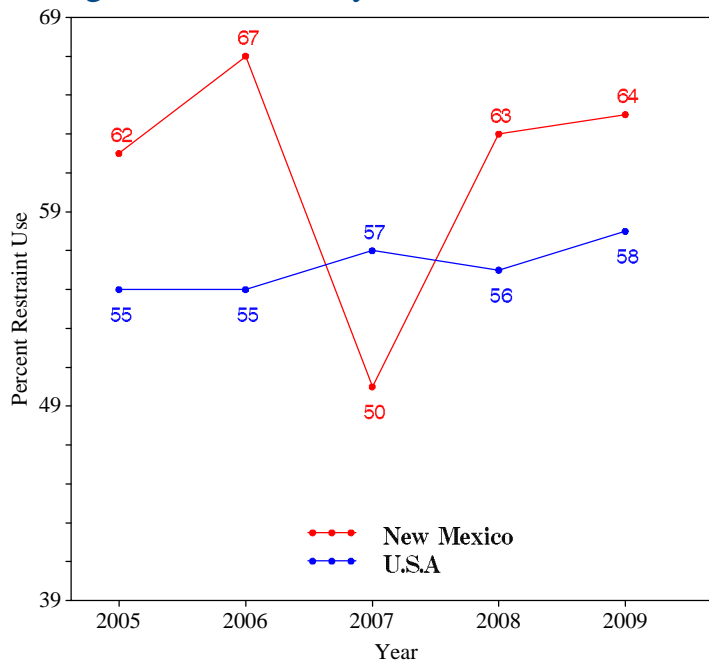
***USA Data: National Occupant Protection Use Survey. New Mexico Data: State Survey

Note: The Purpose of this Table is to Compare (as closely as possible) the Use of Restraint Systems by Fatally Injured Occupants with Occupants in all Driving Situations

Back To The Table of Contents



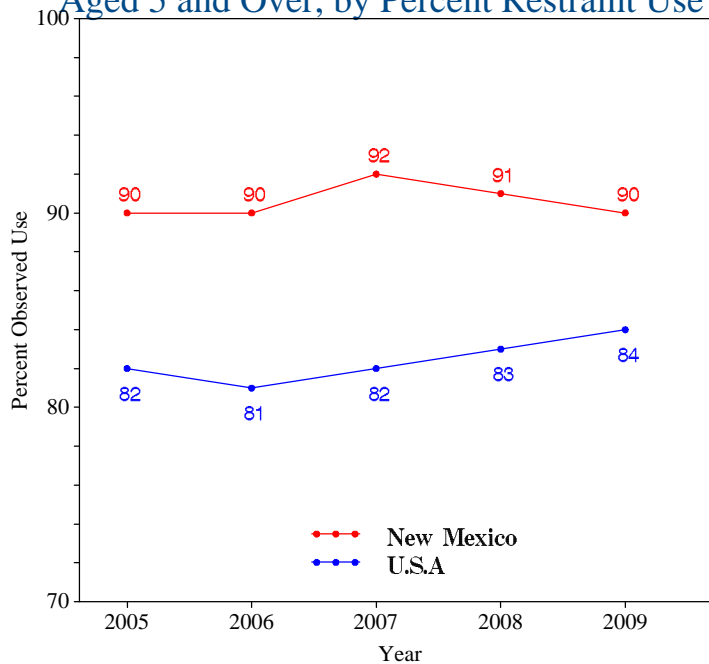
Daytime Front Seat (Outboard Only) Passenger Vehicle Occupant Fatalities, Aged 5 and Over, by Percent Restraint Use*



*Percent Based Only Where Restraint Use Was Known

[Back To The Table of Contents](#)

Daytime Front Seat (Outboard Only) Passenger Vehicle Occupants Observed, Aged 5 and Over, by Percent Restraint Use*



*USA Data: National Occupant Protection Use Survey. New Mexico Data: State Survey

[Back To The Table of Contents](#)



Passenger Vehicle Occupant Fatalities Age 5 and Above by Restraint Use and Lives Saved Estimates

Year	Fatalities Age 5 and Above					Lives Saved Estimates**	
	Total	Restrained	Unrestrained	Unknown Restraint Use	Percent Known Restrained*	Lives Saved at Current Belt Use	Additional Lives Savable at 100% Belt Usage
2005	356	172	177	7	49	230	45
2006	332	151	164	17	48	207	49
2007	268	104	159	5	40	133	30
2008	245	117	125	3	48	156	34
2009	249	132	117	0	53	173	38

*Percent Based Only Where Restraint Use Was Known

**Lives Saved Estimates (Sum of columns may not equal other published numbers due to rounding)

[Back To The Table of Contents](#)

Passenger Vehicle Occupant Fatalities Age 4 and Under by Restraint Use and Lives Saved Estimates

Year	Fatalities Age 4 and Under					Lives Saved Estimates**	
	Total	Restrained	Unrestrained	Unknown Restraint Use	Percent Known Restrained*	Lives Saved at Current Seat Belt and Child Safety Seat Usage	
2005	7	3	4	0	43	4	
2006	9	3	5	1	38	6	
2007	4	2	0	2	100	4	
2008	5	2	3	0	40	2	
2009	8	4	4	0	50	3	

*Percent Based Only Where Restraint Use Was Known

**Lives Saved Estimates

[Back To The Table of Contents](#)



Motorcyclist Fatalities by Helmet Use and Lives Saved Estimates

Year	Fatalities					Lives Saved Estimates**	
	Total	Helmeted	Unhelmeted	Unknown Helmet Use	Percent Known Helmeted*	Lives Saved at Current Helmet Use	Additional Lives Savable at 100% Helmet Usage
2005	38	6	31	1	16	4	12
2006	43	9	32	2	22	6	12
2007	50	9	41	0	18	5	15
2008	49	2	47	0	4	1	18
2009	40	1	39	0	3	1	15

*Percent Based Only Where Helmet Use Was Known

**Lives Saved Estimates (Sum of columns may not equal other published numbers due to rounding)

[Back To The Table of Contents](#)



Fatalities by Person Type

Person Type		2005		2006		2007		2008		2009	
		#	%*	#	%*	#	%*	#	%*	#	%*
Occupants	Passenger Car	148	30	140	29	115	28	94	26	109	30
	Light Truck - Pickup	96	20	101	21	87	21	70	19	71	20
	Light Truck - Utility	96	20	78	16	59	14	75	20	66	18
	Light Truck - Van	24	5	24	5	16	4	11	3	15	4
	Light Truck - Other	1	0	0	0	0	0	0	0	0	0
	Large Truck	13	3	13	3	19	5	13	4	9	2
	Bus	0	0	0	0	1	0	2	1	0	0
	Other/Unknown Occupants	6	1	10	2	7	2	6	2	7	2
	Total Occupants	384	79	366	76	304	74	271	74	277	77
Motorcyclists	Total Motorcyclists	38	8	43	9	50	12	49	13	40	11
Nonoccupants	Pedestrian	61	13	69	14	52	13	39	11	39	11
	Bicyclist and Other Cyclist	5	1	6	1	7	2	7	2	3	1
	Other/Unknown Nonoccupants	0	0	0	0	0	0	0	0	2	1
	Total Nonoccupants	66	14	75	15	59	14	46	13	44	12
Total	Total	488	100	484	100	413	100	366	100	361	100

*Sum of Percents May Not = 100 Due to Individual Cell Rounding

[Back To The Table of Contents](#)



Fatalities by Crash Type

Crash Type	2005	2006	2007	2008	2009
Total Fatalities (All Crashes)*	488	484	413	366	361
- (1) Single Vehicle	310	321	285	242	213
- (2) Involving a Large Truck	63	80	57	45	36
- (3) Involving Speeding	165	173	159	70	69
- (4) Involving a Rollover	240	207	193	162	144
- (5) Involving a Roadway Departure	245	235	195	111	61
- (6) Involving an Intersection (or Intersection Related)	66	65	63	77	92

(1) Crash Involved Only One Coded Vehicle

(2) Crash Involved at Least One Large Truck

(3) Crash Involved at Least One Vehicle Speeding

(4) Crash Involved at Least One Vehicle That Rolled Over

(5) Crash Involved at Least One Vehicle That Departed the Roadway (FHWA Definition)

(6) Crash Occured Within an Intersection or Within the Approach to an Intersection

*A Fatality Can Be in More Than One Category. Therefore Sum of the Individual Cells Will Not Equal the Total Due to Double Counting

[Back To The Table of Contents](#)



Motorcyclist Fatalities by Age

Year	Age						Total
	<20	20-29	30-39	40-49	50-59	>59	
2005	4	10	13	6	3	2	38
2006	1	5	10	13	10	4	43
2007	1	16	9	10	13	1	50
2008	2	14	9	13	7	4	49
2009	1	8	5	14	6	6	40

[Back To The Table of Contents](#)

Motorcyclist Fatalities Per 100,000 Registered Motorcycles

Year	Motorcyclist Fatalities	Total Motorcycle Registrations*	Motorcyclist Fatalities Per 100,000 Motorcycle Registrations
2005	38	37,663	100.9
2006	43	43,495	98.86
2007	50	46,779	106.9
2008	49	47,176	103.9
2009	40		

*Data Source: FHWA

*2009 Motorcycle Registrations are Not Yet Available

[Back To The Table of Contents](#)



Fatalities by Person Type and Race/Hispanic Origin

Person Type by Race/Hispanic Origin		2005	2006	2007	2008
Occupants (All Vehicle Types)	Hispanic	174	182	130	128
	White Non-Hispanic	193	174	168	130
	Black, Non-Hispanic	7	1	6	5
	American Indian, Non-Hispanic/Unknown	48	51	49	53
	Asian, Non-Hispanic/Unknown	0	0	0	1
	All Other Non-Hispanic or Race	0	1	1	3
	Total	422	409	354	320
Non-Occupants (Pedestrians, Pedalcyclists and Other/Unknown NonOccupants)					
	Hispanic	16	29	17	21
	White Non-Hispanic	21	22	18	9
	Black, Non-Hispanic	1	2	0	1
	American Indian, Non-Hispanic/Unknown	27	21	24	15
	Asian, Non-Hispanic/Unknown	0	0	0	0
	All Other Non-Hispanic or Race	1	1	0	0
Total	66	75	59	46	
Total	488	484	413	366	

2009 Race/Hispanic Origin Data is Not Yet Complete

[Back To The Table of Contents](#)



5 Year Trend For The Top 10 Counties of 2009 - Fatalities

Counties by 2009 Ranking		Fatalities					Percent of Total				
		2005	2006	2007	2008	2009	2005	2006	2007	2008	2009
1	Bernalillo County	82	73	67	57	58	17	15	16	16	16
2	Mckinley County	54	45	39	32	34	11	9	9	9	9
3	Dona Ana County	22	34	25	12	29	5	7	6	3	8
4	Santa Fe County	33	31	19	14	26	7	6	5	4	7
5	Sandoval County	24	22	14	22	21	5	5	3	6	6
6	San Juan County	35	44	40	30	16	7	9	10	8	4
7	Chaves County	10	20	9	11	15	2	4	2	3	4
8	Eddy County	10	14	9	15	15	2	3	2	4	4
9	Rio Arriba County	18	12	16	15	15	4	2	4	4	4
10	Torrance County	13	11	10	7	14	3	2	2	2	4
Sub Total 1.*	Top Ten Counties	325	326	264	231	243	67	67	64	63	67
Sub Total 2.**	All Other Counties	159	158	149	135	118	33	33	36	37	33
Total	All Counties	484	484	413	366	361	100	100	100	100	100

*This Sub Total is the Total for the Top Ten Counties

**This Sub Total is the Total for all Counties Outside the Top Ten

[Back To The Table of Contents](#)



5 Year Trend For The Top 10 Counties of 2009 - Fatalities Year to Year Percent Change

Counties by 2009 Ranking		Fatalities					Percent Change From Previous Year			
		2005	2006	2007	2008	2009	2006	2007	2008	2009
1	Bernalillo County	82	73	67	57	58	-11	-8	-15	2
2	Mckinley County	54	45	39	32	34	-17	-13	-18	6
3	Dona Ana County	22	34	25	12	29	55	-26	-52	142
4	Santa Fe County	33	31	19	14	26	-6	-39	-26	86
5	Sandoval County	24	22	14	22	21	-8	-36	57	-5
6	San Juan County	35	44	40	30	16	26	-9	-25	-47
7	Chaves County	10	20	9	11	15	100	-55	22	36
8	Eddy County	10	14	9	15	15	40	-36	67	0
9	Rio Arriba County	18	12	16	15	15	-33	33	-6	0
10	Torrance County	13	11	10	7	14	-15	-9	-30	100
	Sub Total 1.* Top Ten Counties	325	326	264	231	243	0	-19	-13	5
	Sub Total 2.** All Other Counties	159	158	149	135	118	-1	-6	-9	-13
	Total All Counties	484	484	413	366	361	0	-15	-11	-1

*This Sub Total is the Total for the Top Ten Counties

**This Sub Total is the Total for all Counties Outside the Top Ten

[Back To The Table of Contents](#)



5 Year Trend For The Top 10 Counties of 2009 - Fatality Rates

Median Rate for all U.S. Counties: 18.23

Counties by 2009 Ranking		Fatalities Per 100,000 Population					
		2005	2006	2007	2008	2009	
1	Guadalupe County	134.62	272.73	340.29	185.14	188.63	
2	Harding County	0.00	0.00	0.00	0.00	150.83	
3	Torrance County	77.79	65.71	60.32	42.87	84.98	
4	Union County	105.79	80.69	107.58	53.45	78.60	
5	Socorro County	82.48	27.42	77.13	82.64	60.80	
6	Hidalgo County	100.79	142.07	219.34	79.32	59.32	
7	Catron County	60.64	58.51	28.92	0.00	58.09	
8	Sierra County	15.88	7.96	24.04	39.36	54.32	
9	Mckinley County	76.46	63.85	55.79	45.44	48.22	
10	Lincoln County	33.75	33.45	19.20	4.78	38.07	
Sub Rate 1.*		Top Ten Counties	81.62	67.98	68.99	59.89	58.26
Sub Rate 2.**		All Other Counties	19.19	20.61	16.07	14.58	14.57
Total Rate		All Counties	25.25	24.91	20.98	18.42	17.96

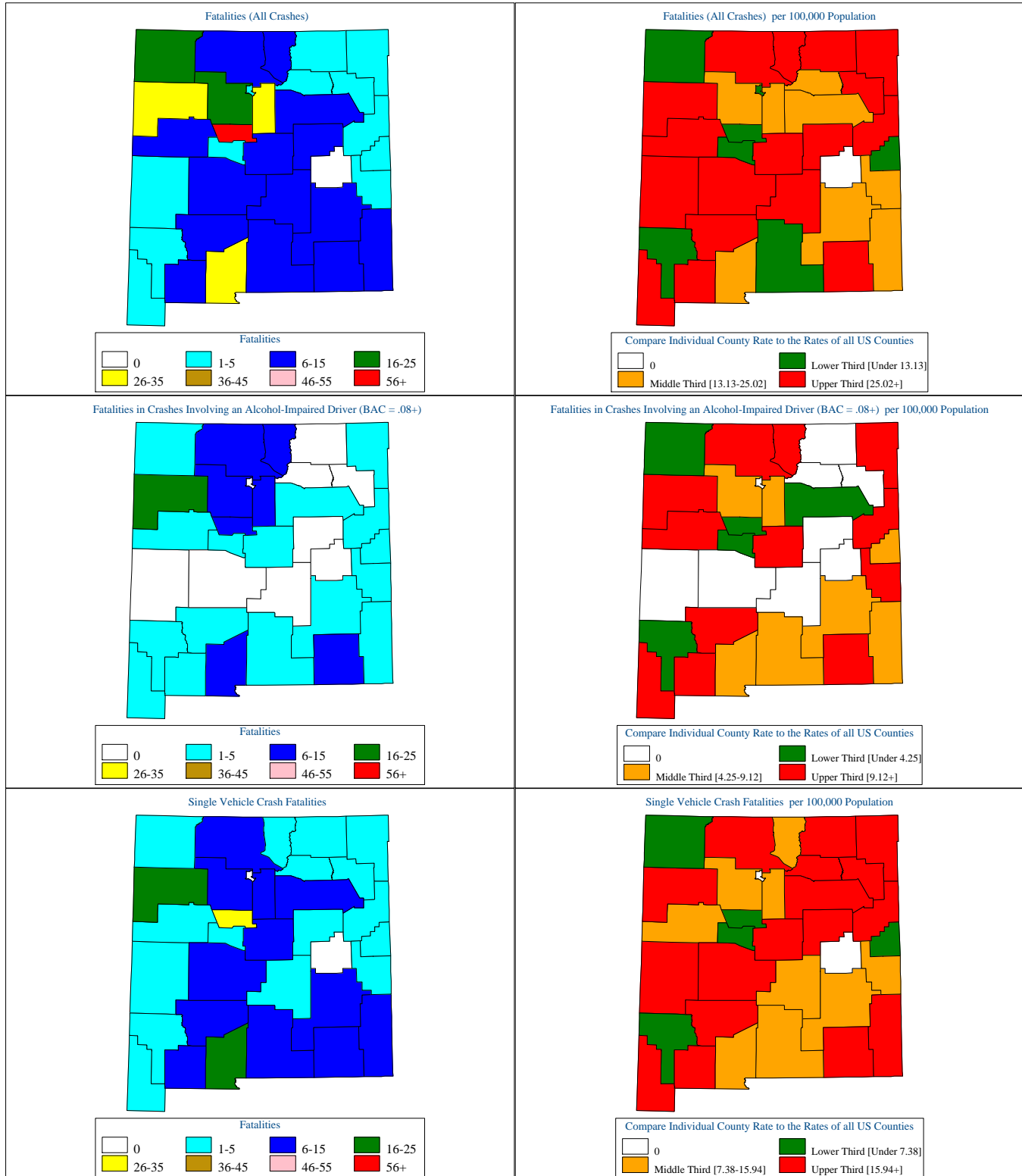
*This Sub Rate is the Rate for the Top Ten Counties

**This Sub Rate is the Rate for all Counties Outside the Top Ten

[Back To The Table of Contents](#)



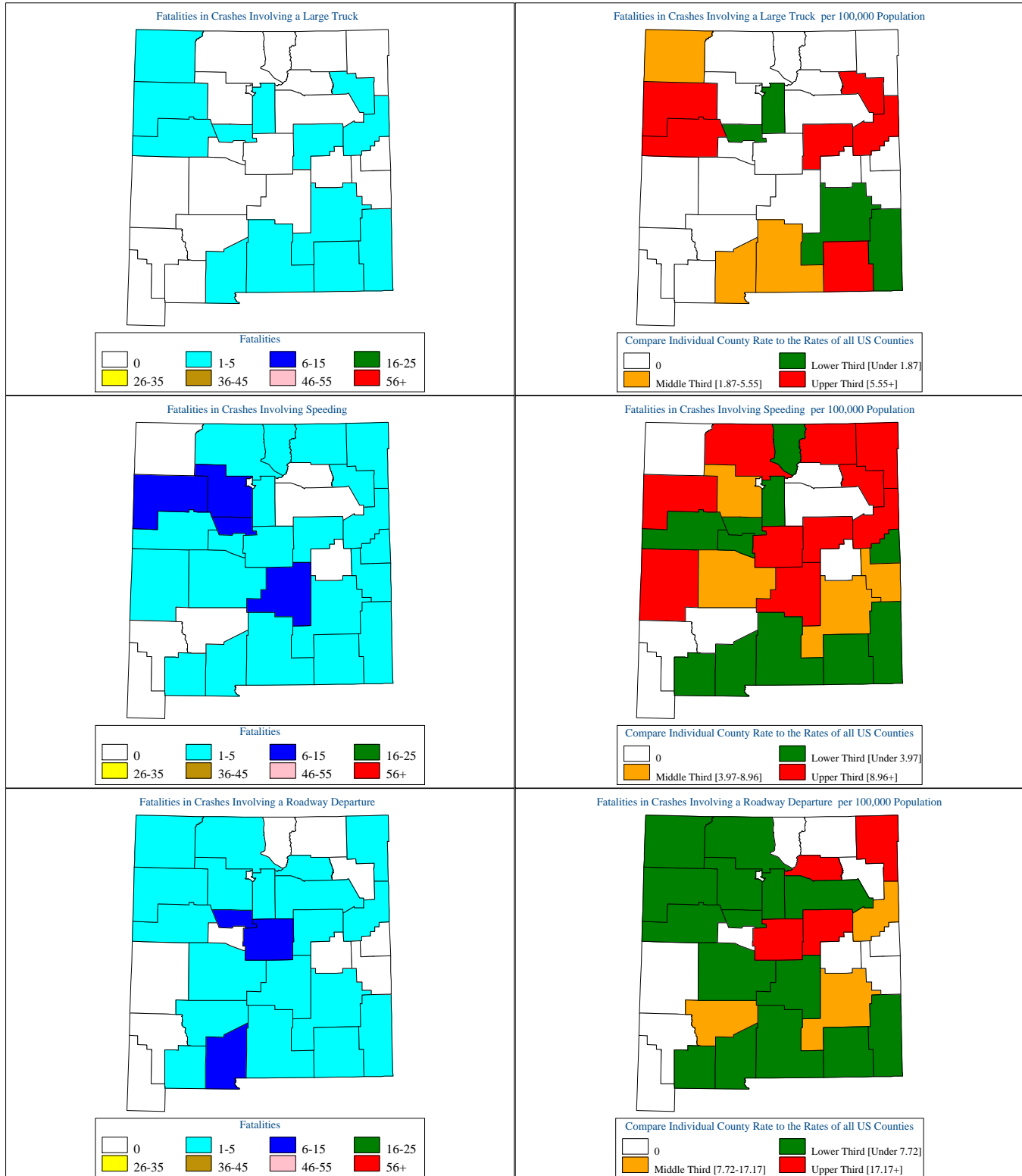
New Mexico Motor Vehicle Crash Fatality Maps for 2009



[Back To The Table of Contents](#)



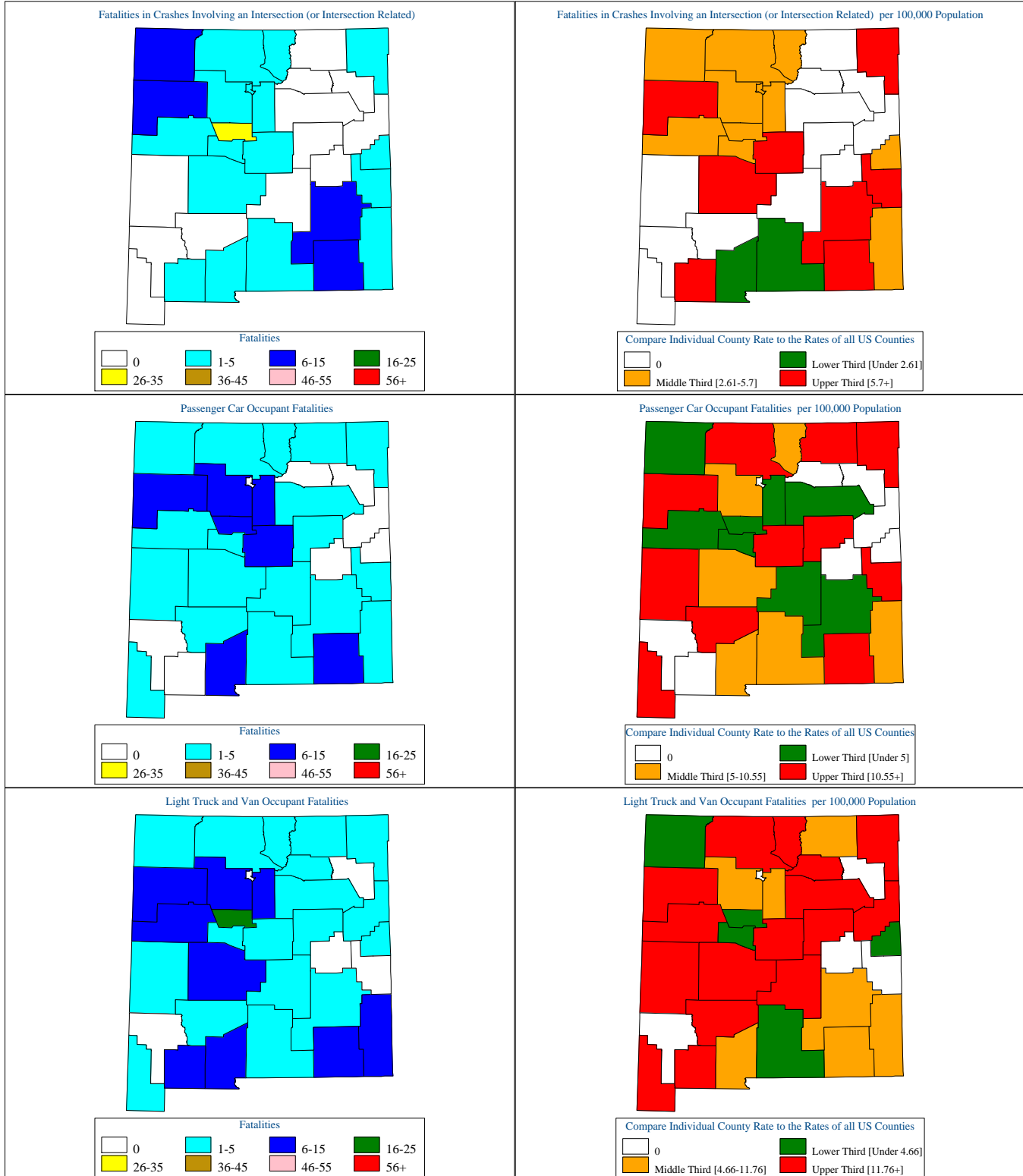
New Mexico Motor Vehicle Crash Fatality Maps for 2009



[Back To The Table of Contents](#)



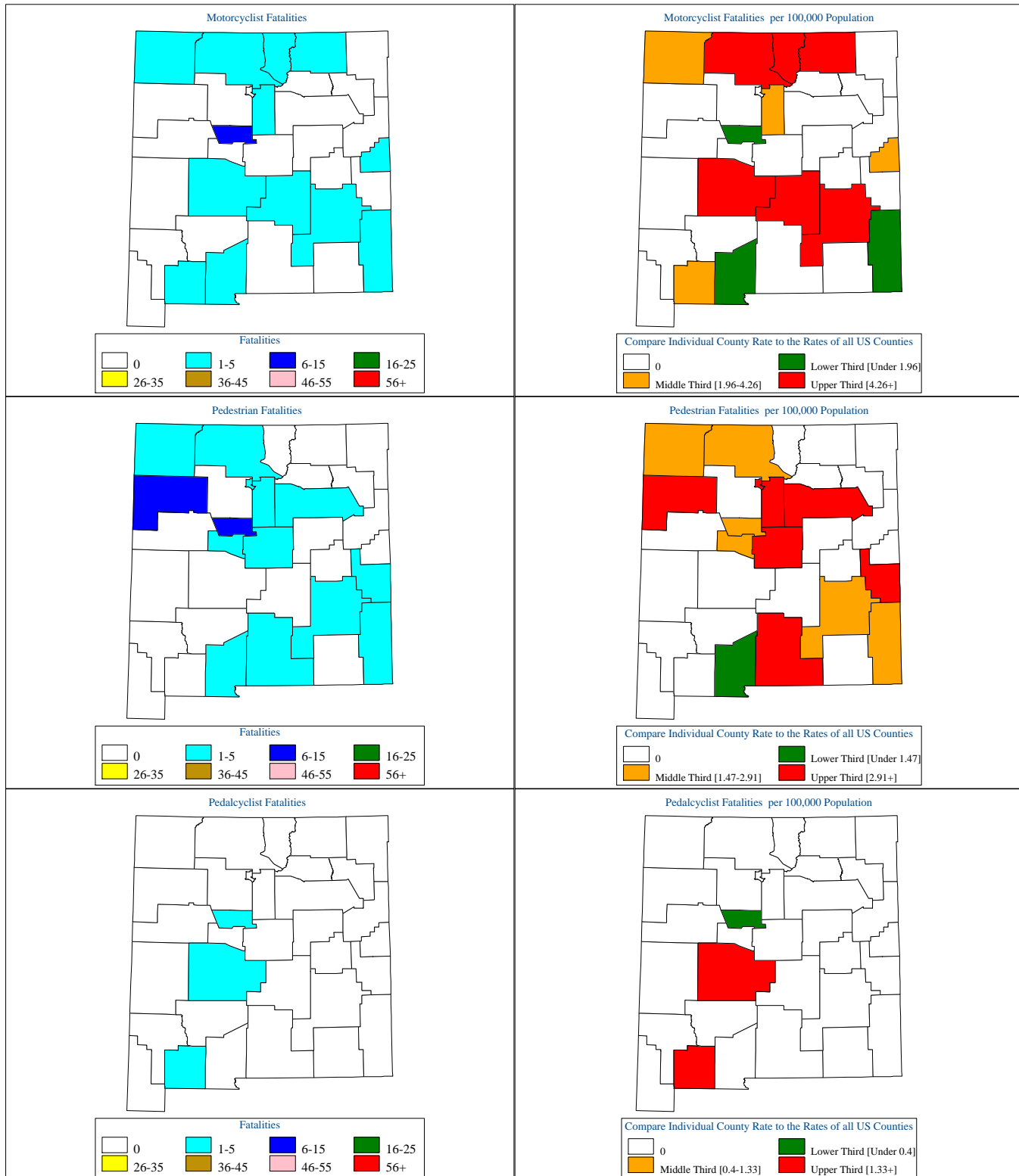
New Mexico Motor Vehicle Crash Fatality Maps for 2009



[Back To The Table of Contents](#)



New Mexico Motor Vehicle Crash Fatality Maps for 2009



[Back To The Table of Contents](#)