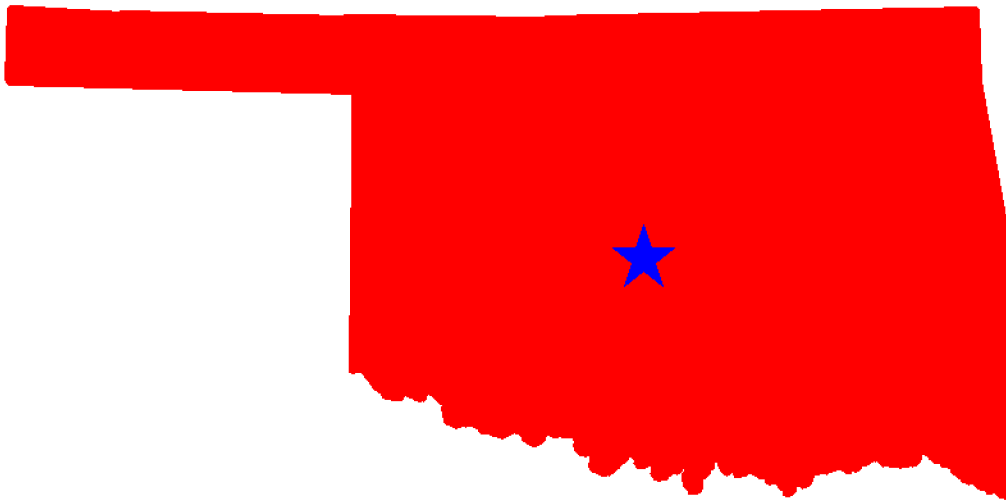




Traffic Safety Facts Oklahoma 2005-2009



This Report Contains Data From the Following Sources:

- Fatality Data - NCSA Fatality Analysis Reporting System (FARS): 2005-2008 Final File and 2009 Annual Report File (ARF)
- Observed Safety Belt Data - NCSA National Occupant Protection Use Survey (NOPUS) and the Oklahoma State Survey
- Vehicle Miles of Travel Data and Motorcycle Registrations - Federal Highway Administration (FHWA)
- Population Data - U.S. Bureau of the Census



Table of Contents

3. Traffic Safety Performance Measures
4. Fatality Rates: Oklahoma , U.S. and Best State
5. Alcohol-Related Fatalities: Oklahoma , U.S. and Best State (Old Definition)
6. Alcohol-Impaired Driving Fatalities: Oklahoma , U.S. and Best State (New Definition)
7. Fatalities Per 100 Million VMT: Oklahoma , U.S.
7. Alcohol-Impaired Driving Fatalities Per 100 Million VMT: Oklahoma , U.S.
8. Blood Alcohol Concentration (BAC) Reporting Rates For Drivers/Motorcycle Rider (Operators) Involved in Fatal Crashes: Oklahoma , U.S. and Best State
9. Front Seat Passenger Vehicle Occupants, Aged 5 and Over, by Restraint Use: Fatalities and Observed Oklahoma , U.S. and Best State
10. Front Seat Passenger Vehicle Occupant Fatalities, Aged 5 and Over, by Percent Restraint Use: Oklahoma , U.S.
10. Front Seat Passenger Vehicle Occupants Observed, Aged 5 and Over, by Percent Restraint Use: Oklahoma , U.S.
11. Passenger Vehicle Occupant Fatalities Aged 5 and Above by Restraint Use and Lives Saved Estimates
11. Passenger Vehicle Occupant Fatalities Aged Under 5 by Restraint Use and Lives Saved Estimates
12. Motorcyclist Fatalities by Helmet Use and Lives Saved Estimates
13. Fatalities by Person Type
14. Fatalities by Crash Type
15. Motorcyclist Fatalities by Age
15. Motorcyclist Fatalities Per 100,000 Registered Motorcycles
16. Fatalities by Person Type and Race/Hispanic Origin
17. Top 10 Counties for Fatalities
18. Top 10 Counties for Fatalities: Year to Year Percent Change
19. Top 10 Counties for Fatality Rates
20. Motor Vehicle Crash Fatality Maps:
Total Fatalities, Alcohol-Impaired Driving Fatalities, Single Vehicle Crash Fatalities
21. Motor Vehicle Crash Fatality Maps:
Large Truck Crash Fatalities, Speeding Involved Fatalities, Roadway Departure Fatalities
22. Motor Vehicle Crash Fatality Maps:
Intersection Fatalities, Passenger Car Occupants, Light Truck and Van Occupants
23. Motor Vehicle Crash Fatality Maps:
Motorcyclist Fatalities, Pedestrian Fatalities, Pedestrian Fatalities



Traffic Safety Performance (Core Outcome) Measures* For Oklahoma

Core Outcome Measures		Year				
		2005	2006	2007	2008	2009
Traffic Fatalities	Total	803	765	766	750	738
	Rural	585	586	540	523	498
	Urban	218	179	226	226	240
	Unknown	0	0	0	1	0
Fatalities Per 100 Million Vehicle Miles Driven**	Total	1.71	1.57	1.61	1.55	
	Rural	2.58	2.53	2.36	2.25	
	Urban	0.89	0.70	0.92	0.90	
Passenger Vehicle Occupant Fatalities (All Seat Positions)	Total	632	599	584	568	552
	Restrained	249	242	231	196	211
	Unrestrained	378	351	318	338	306
	Unknown	5	6	35	34	35
Alcohol-Impaired Driving Fatalities (BAC=.08+)***		232	199	223	242	235
Speeding-Related Fatalities		293	269	213	221	234
Motorcyclist Fatalities	Total	77	64	76	89	108
	Helmeted	19	16	22	23	29
	Unhelmeted	58	48	52	65	78
	Unknown	0	0	2	1	1
Drivers Involved in Fatal Crashes	Total	1,062	1,013	997	1,008	942
	Aged Under 15	4	2	4	3	3
	Aged 15-20	146	133	125	136	112
	Aged Under 21	150	135	129	139	115
	Aged 21 and Over	906	872	863	861	817
	Unknown Age	6	6	5	8	10
Pedestrian Fatalities		50	46	67	50	31

*These Performance Measures Were Developed By The National Highway Traffic Safety Administration (NHTSA) and the Governors Highway Safety Association (GHSA) (See Publication: DOT HS 811 025)

**2009 State Vehicle Miles Traveled (VMT) Data is Not Yet Available

***Based on the BAC of All Involved Drivers and Motorcycle Riders (Operators) Only

[Back To The Table of Contents](#)



Fatality Rates: Oklahoma , U.S. and Best State

Year		Fatalities	Total Vehicle Miles Traveled (Millions)	Fatalities Per 100 Million Vehicle Miles Traveled	Total Population	Fatalities Per 100,000 Population
2005	Oklahoma	803	47,019	1.71	3,532,769	22.73
	US	43,510	2,989,430	1.46	295,753,151	14.71
	Best State*			0.80		6.83
2006	Oklahoma	765	48,689	1.57	3,574,334	21.40
	US	42,708	3,014,371	1.42	298,593,212	14.30
	Best State*			0.78		6.34
2007	Oklahoma	766	47,572	1.61	3,612,186	21.21
	US	41,259	3,032,399	1.36	301,579,895	13.68
	Best State*			0.79		6.54
2008	Oklahoma	750	48,499	1.55	3,644,025	20.58
	US	37,423	2,973,509	1.26	304,374,846	12.30
	Best State*			0.67		5.56
2009	Oklahoma	738			3,687,050	20.02
	US	33,808	2,979,321	1.13	307,006,550	11.01
	Best State*					4.84

*State (or States) With Lowest Rates: Lowest VMT and Population Rates Could Be in Different States

2009 National VMT is a Preliminary Estimate and Subject to Change

2009 State Vehicle Miles Traveled (VMT) Data is Not Yet Available

[Back To The Table of Contents](#)



Fatalities By The Highest Blood Alcohol Concentration (BAC) in the Crash:**
Oklahoma , U.S. and Best State
(Old Definition)

Year		Total Fatalities in all Crashes	Highest BAC level in the Crash					
			BAC = .01+			BAC = .08+		
			Number	Percent	Per 100 Million VMT	Number	Percent	Per 100 Million VMT
2005	Oklahoma	803	286	36	0.61	250	31	0.53
	US	43,510	17,590	40	0.59	15,102	35	0.51
	Best State*			14	0.16		12	0.14
2006	Oklahoma	765	260	34	0.53	216	28	0.44
	US	42,708	17,738	42	0.59	15,144	35	0.50
	Best State*			24	0.26		20	0.22
2007	Oklahoma	766	262	34	0.55	240	31	0.50
	US	41,259	17,158	42	0.57	14,603	35	0.48
	Best State*			24	0.27		21	0.23
2008	Oklahoma	750	289	39	0.60	260	35	0.54
	US	37,423	15,449	41	0.52	13,258	35	0.45
	Best State*			21	0.21		16	0.16
2009	Oklahoma	738	272	37		243	33	
	US	33,808	14,188	42	0.48	12,233	36	0.41
	Best State*			23			18	

*State (or States) With Lowest Percents: Lowest Percents Could Be in Different States

**Based on the BAC of All Involved Drivers, Motorcycle Riders (Operators), Pedalcyclists and Pedestrians

2009 National VMT is a Preliminary Estimate and Subject to Change

2009 State Vehicle Miles Traveled (VMT) Data is Not Yet Available

[Back To The Table of Contents](#)



Alcohol-Impaired Driving Fatalities**:
Oklahoma , U.S. and Best State
(New Definition)

Year		Total Fatalities in all Crashes	Alcohol-Impaired Driving Fatalities (BAC = .08+)		
			Number	Percent	Per 100 Million VMT
2005	Oklahoma	803	232	29	0.49
	US	43,510	13,582	31	0.45
	Best State*			12	0.13
2006	Oklahoma	765	199	26	0.41
	US	42,708	13,491	32	0.45
	Best State*			18	0.20
2007	Oklahoma	766	223	29	0.47
	US	41,259	13,041	32	0.43
	Best State*			19	0.21
2008	Oklahoma	750	242	32	0.50
	US	37,423	11,711	31	0.39
	Best State*			16	0.16
2009	Oklahoma	738	235	32	
	US	33,808	10,839	32	0.36
	Best State*			16	

*State (or States) With Lowest Percents: Lowest Percents Could Be in Different States

**Based on the BAC of All Involved Drivers and Motorcycle Riders (Operators) Only

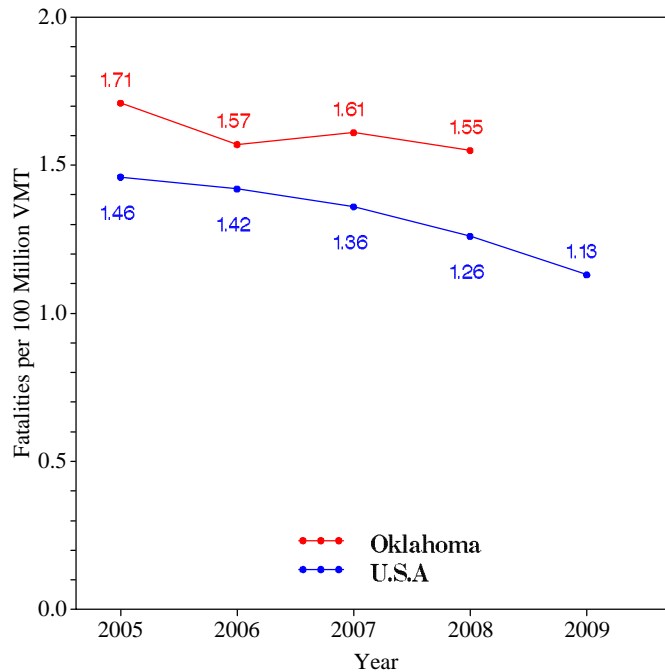
2009 National VMT is a Preliminary Estimate and Subject to Change

2009 State Vehicle Miles Traveled (VMT) Data is Not Yet Available

[Back To The Table of Contents](#)

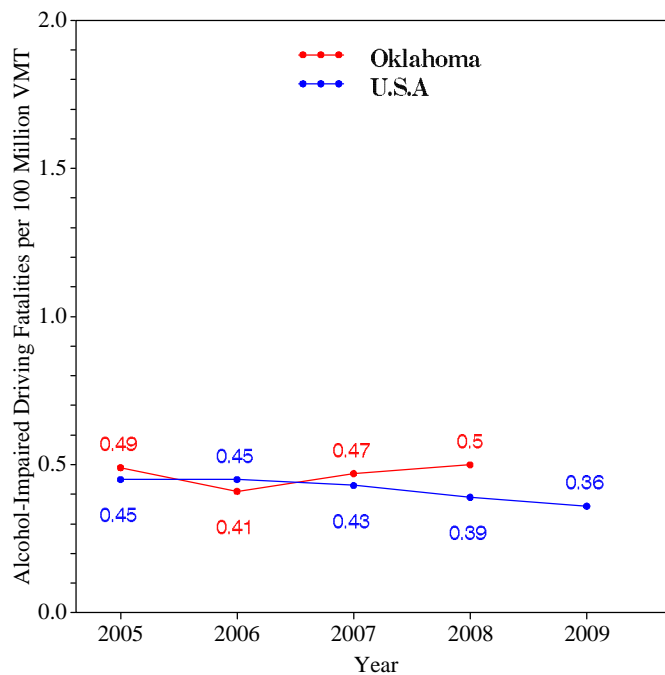


Fatalities per 100 Million VMT



[Back To The Table of Contents](#)

Alcohol-Impaired Driving Fatalities per 100 Million VMT



2009 National VMT is a Preliminary Estimate and Subject to Change
2009 State Vehicle Miles Traveled (VMT) Data is Not Yet Available

[Back To The Table of Contents](#)



**Blood Alcohol Concentration (BAC) Reporting Rates
For Drivers/Motorcycle Riders (Operators)
Involved in Fatal Crashes:
Oklahoma , U.S. and Best State**

Year		Surviving Drivers/Motorcycle Riders			Killed Drivers/Motorcycle Riders			Total Drivers/Motorcycle Riders		
		Total	With Blood Alcohol Concentration (BAC) Results Reported to FARS		Total	With Blood Alcohol Concentration (BAC) Results Reported to FARS		Total	With Blood Alcohol Concentration (BAC) Results Reported to FARS	
			Number	Percent		Number	Percent		Number	Percent
2005	Oklahoma	515	90	17	547	443	81	1,062	533	50
	US	31,729	7,415	23	27,491	18,773	68	59,220	26,188	44
	Best State*			77			98			84
2006	Oklahoma	489	110	22	524	458	87	1,013	568	56
	US	30,498	7,482	25	27,348	18,911	69	57,846	26,393	46
	Best State*			81			99			85
2007	Oklahoma	498	130	26	499	448	90	997	578	58
	US	29,449	7,631	26	26,570	19,434	73	56,019	27,065	48
	Best State*			82			100			84
2008	Oklahoma	493	197	40	515	477	93	1,008	674	67
	US	26,162	7,656	29	24,254	18,415	76	50,416	26,071	52
	Best State*			81			99			85
2009	Oklahoma	421	141	33	521	459	88	942	600	64
	US	23,432	6,372	27	21,798	15,505	71	45,230	21,877	48
	Best State*			86			97			90

*State (or States) With Highest Percents: Highest Percents Could Be in Different States

[Back To The Table of Contents](#)



Daytime Front Seat (Outboard Only) Passenger Vehicle Occupants, Aged 5 and Over, by Restraint Use: Fatalities and Observed Oklahoma , U.S. and Best State

Table with 4 columns: Year, Location (Oklahoma, US, Best State*), Fatalities - Restrained** (Percent), and Observed - Restrained*** (Percent). Rows are grouped by year from 2005 to 2009.

*State With Highest Percent. Fatal Crash and Observed Percents Can Be Different States

**Percent Based Only Where Restraint Use Was Known

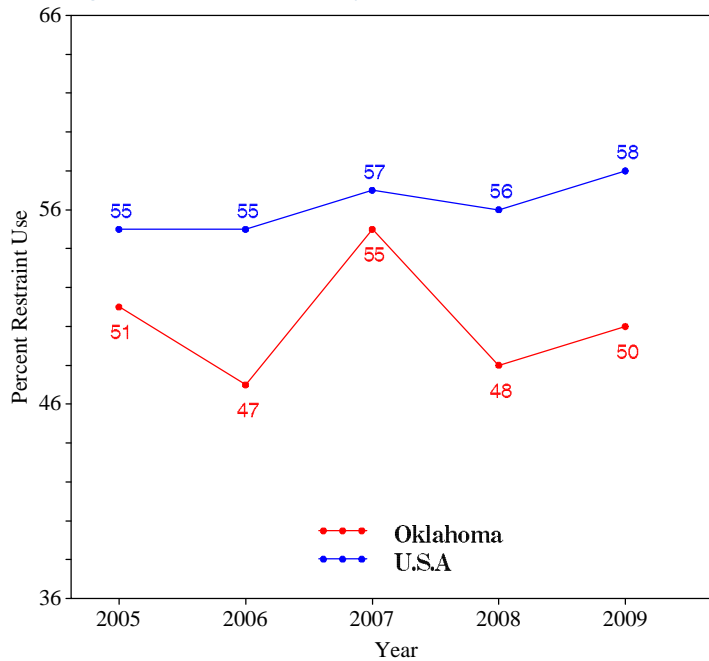
***USA Data: National Occupant Protection Use Survey. Oklahoma Data: State Survey

Note: The Purpose of this Table is to Compare (as closely as possible) the Use of Restraint Systems by Fatally Injured Occupants with Occupants in all Driving Situations

Back To The Table of Contents



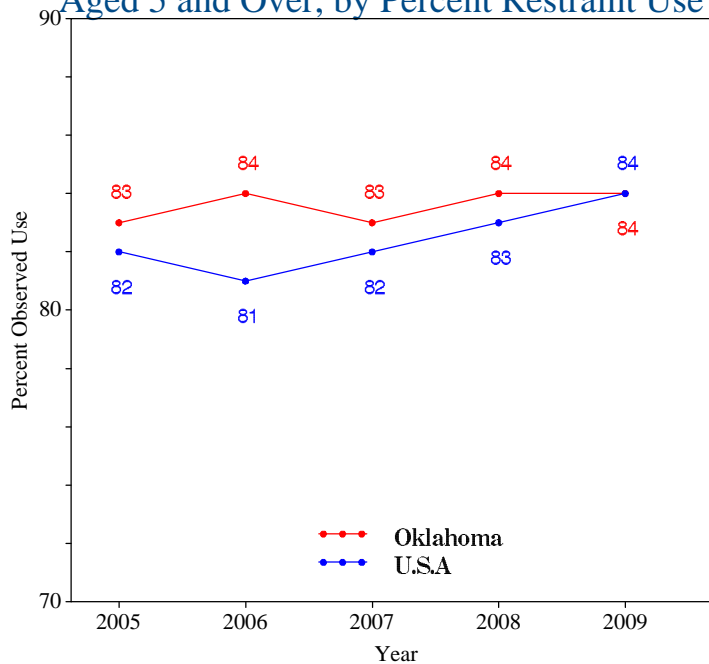
Daytime Front Seat (Outboard Only) Passenger Vehicle Occupant Fatalities, Aged 5 and Over, by Percent Restraint Use*



*Percent Based Only Where Restraint Use Was Known

[Back To The Table of Contents](#)

Daytime Front Seat (Outboard Only) Passenger Vehicle Occupants Observed, Aged 5 and Over, by Percent Restraint Use*



*USA Data: National Occupant Protection Use Survey. Oklahoma Data: State Survey

[Back To The Table of Contents](#)



Passenger Vehicle Occupant Fatalities Age 5 and Above by Restraint Use and Lives Saved Estimates

Year	Fatalities Age 5 and Above					Lives Saved Estimates**	
	Total	Restrained	Unrestrained	Unknown Restraint Use	Percent Known Restrained*	Lives Saved at Current Belt Use	Additional Lives Savable at 100% Belt Usage
2005	627	248	374	5	40	292	112
2006	583	228	349	6	40	279	108
2007	578	228	315	35	42	303	121
2008	564	195	335	34	37	256	105
2009	541	204	303	34	40	267	109

*Percent Based Only Where Restraint Use Was Known

**Lives Saved Estimates (Sum of columns may not equal other published numbers due to rounding)

[Back To The Table of Contents](#)

Passenger Vehicle Occupant Fatalities Age 4 and Under by Restraint Use and Lives Saved Estimates

Year	Fatalities Age 4 and Under					Lives Saved Estimates**	
	Total	Restrained	Unrestrained	Unknown Restraint Use	Percent Known Restrained*	Lives Saved at Current Seat Belt and Child Safety Seat Usage	
2005	5	1	4	0	20	1	
2006	16	14	2	0	88	22	
2007	6	3	3	0	50	5	
2008	4	1	3	0	25	1	
2009	11	7	3	1	70	11	

*Percent Based Only Where Restraint Use Was Known

**Lives Saved Estimates

[Back To The Table of Contents](#)



Motorcyclist Fatalities by Helmet Use and Lives Saved Estimates

Year	Fatalities					Lives Saved Estimates**	
	Total	Helmeted	Unhelmeted	Unknown Helmet Use	Percent Known Helmeted*	Lives Saved at Current Helmet Use	Additional Lives Savable at 100% Helmet Usage
2005	77	19	58	0	25	11	22
2006	64	16	48	0	25	10	18
2007	76	22	52	2	30	13	19
2008	89	23	65	1	26	14	24
2009	108	29	78	1	27	17	30

*Percent Based Only Where Helmet Use Was Known

**Lives Saved Estimates (Sum of columns may not equal other published numbers due to rounding)

[Back To The Table of Contents](#)



Fatalities by Person Type

Person Type		2005		2006		2007		2008		2009	
		#	%*	#	%*	#	%*	#	%*	#	%*
Occupants	Passenger Car	319	40	313	41	251	33	262	35	240	33
	Light Truck - Pickup	183	23	172	22	175	23	188	25	172	23
	Light Truck - Utility	87	11	87	11	116	15	90	12	100	14
	Light Truck - Van	42	5	26	3	42	5	28	4	38	5
	Light Truck - Other	1	0	1	0	0	0	0	0	2	0
	Large Truck	27	3	35	5	25	3	24	3	26	4
	Bus	1	0	2	0	0	0	0	0	0	0
	Other/Unknown Occupants	7	1	10	1	11	1	11	1	8	1
	Total Occupants	667	83	646	84	620	81	603	80	586	79
Motorcyclists	Total Motorcyclists	77	10	64	8	76	10	89	12	108	15
Nonoccupants	Pedestrian	50	6	46	6	67	9	50	7	31	4
	Bicyclist and Other Cyclist	7	1	6	1	3	0	4	1	11	1
	Other/Unknown Nonoccupants	2	0	3	0	0	0	4	1	2	0
	Total Nonoccupants	59	7	55	7	70	9	58	8	44	6
Total	Total	803	100	765	100	766	100	750	100	738	100

*Sum of Percents May Not = 100 Due to Individual Cell Rounding

[Back To The Table of Contents](#)



Fatalities by Crash Type

Crash Type	2005	2006	2007	2008	2009
Total Fatalities (All Crashes)*	803	765	766	750	738
- (1) Single Vehicle	440	403	399	419	431
- (2) Involving a Large Truck	121	140	112	115	98
- (3) Involving Speeding	293	269	213	221	234
- (4) Involving a Rollover	338	285	290	312	293
- (5) Involving a Roadway Departure	505	444	479	453	459
- (6) Involving an Intersection (or Intersection Related)	145	108	116	131	127

(1) Crash Involved Only One Coded Vehicle

(2) Crash Involved at Least One Large Truck

(3) Crash Involved at Least One Vehicle Speeding

(4) Crash Involved at Least One Vehicle That Rolled Over

(5) Crash Involved at Least One Vehicle That Departed the Roadway (FHWA Definition)

(6) Crash Occured Within an Intersection or Within the Approach to an Intersection

*A Fatality Can Be in More Than One Category. Therefore Sum of the Individual Cells Will Not Equal the Total Due to Double Counting

[Back To The Table of Contents](#)



Motorcyclist Fatalities by Age

Year	Age						Total
	<20	20-29	30-39	40-49	50-59	>59	
2005	6	18	12	20	16	5	77
2006	3	14	16	16	11	4	64
2007	2	15	11	14	26	8	76
2008	6	23	13	13	24	10	89
2009	3	25	31	23	18	8	108

[Back To The Table of Contents](#)

Motorcyclist Fatalities Per 100,000 Registered Motorcycles

Year	Motorcyclist Fatalities	Total Motorcycle Registrations*	Motorcyclist Fatalities Per 100,000 Motorcycle Registrations
2005	77	82,350	93.50
2006	64	94,289	67.88
2007	76	101,606	74.80
2008	89	116,012	76.72
2009	108		

*Data Source: FHWA

*2009 Motorcycle Registrations are Not Yet Available

[Back To The Table of Contents](#)



Fatalities by Person Type and Race/Hispanic Origin

Person Type by Race/Hispanic Origin		2005	2006	2007	2008
Occupants (All Vehicle Types)	Hispanic	45	58	60	34
	White Non-Hispanic	541	510	467	452
	Black, Non-Hispanic	35	20	38	22
	American Indian, Non-Hispanic/Unknown	67	78	68	69
	Asian, Non-Hispanic/Unknown	3	4	5	5
	Pacific Islander, Non-Hispanic/Unknown	0	0	1	0
	All Other Non-Hispanic or Race	11	5	3	6
	Unknown Race and Unknown Hispanic	42	35	54	104
	<i>Total</i>	744	710	696	692
Non-Occupants (Pedestrians, Pedalcyclists and Other/Unknown NonOccupants)					
	Hispanic	3	5	5	2
	White Non-Hispanic	39	26	40	34
	Black, Non-Hispanic	5	5	5	7
	American Indian, Non-Hispanic/Unknown	6	11	9	9
	Asian, Non-Hispanic/Unknown	0	1	1	0
	Pacific Islander, Non-Hispanic/Unknown	0	0	0	0
	All Other Non-Hispanic or Race	1	0	0	0
	Unknown Race and Unknown Hispanic	5	7	10	6
<i>Total</i>	59	55	70	58	
Total	803	765	766	750	

2009 Race/Hispanic Origin Data is Not Yet Complete

[Back To The Table of Contents](#)



5 Year Trend For The Top 10 Counties of 2009 - Fatalities

Counties by 2009 Ranking		Fatalities					Percent of Total				
		2005	2006	2007	2008	2009	2005	2006	2007	2008	2009
1	Tulsa County	67	64	72	73	76	8	8	9	10	10
2	Oklahoma County	72	57	82	72	72	9	7	11	10	10
3	Cleveland County	13	22	18	24	22	2	3	2	3	3
4	Canadian County	26	15	16	15	21	3	2	2	2	3
5	Creek County	19	20	20	11	20	2	3	3	1	3
6	Kay County	18	8	15	15	19	2	1	2	2	3
7	Le Flore County	15	20	14	17	19	2	3	2	2	3
8	Osage County	11	14	8	14	18	1	2	1	2	2
9	Ottawa County	22	9	8	7	18	3	1	1	1	2
10	Seminole County	5	12	11	11	18	1	2	1	1	2
Sub Total 1.*	Top Ten Counties	307	290	327	296	303	38	38	43	39	41
Sub Total 2.**	All Other Counties	496	475	439	454	435	62	62	57	61	59
Total	All Counties	803	765	766	750	738	100	100	100	100	100

*This Sub Total is the Total for the Top Ten Counties

**This Sub Total is the Total for all Counties Outside the Top Ten

[Back To The Table of Contents](#)



5 Year Trend For The Top 10 Counties of 2009 - Fatalities Year to Year Percent Change

Counties by 2009 Ranking		Fatalities					Percent Change From Previous Year				
		2005	2006	2007	2008	2009	2006	2007	2008	2009	
1	Tulsa County	67	64	72	73	76	-4	13	1	4	
2	Oklahoma County	72	57	82	72	72	-21	44	-12	0	
3	Cleveland County	13	22	18	24	22	69	-18	33	-8	
4	Canadian County	26	15	16	15	21	-42	7	-6	40	
5	Creek County	19	20	20	11	20	5	0	-45	82	
6	Kay County	18	8	15	15	19	-56	88	0	27	
7	Le Flore County	15	20	14	17	19	33	-30	21	12	
8	Osage County	11	14	8	14	18	27	-43	75	29	
9	Ottawa County	22	9	8	7	18	-59	-11	-13	157	
10	Seminole County	5	12	11	11	18	140	-8	0	64	
Sub Total 1.*		Top Ten Counties	307	290	327	296	303	-6	13	-9	2
Sub Total 2.**		All Other Counties	496	475	439	454	435	-4	-8	3	-4
Total		All Counties	803	765	766	750	738	-5	0	-2	-2

*This Sub Total is the Total for the Top Ten Counties

**This Sub Total is the Total for all Counties Outside the Top Ten

[Back To The Table of Contents](#)



5 Year Trend For The Top 10 Counties of 2009 - Fatality Rates

Median Rate for all U.S. Counties: 18.23

Counties by 2009 Ranking		Fatalities Per 100,000 Population				
		2005	2006	2007	2008	2009
1	Harper County	121.18	60.01	0.00	59.08	118.45
2	Dewey County	90.95	22.89	0.00	22.64	113.53
3	Greer County	17.24	34.85	34.46	34.36	85.76
4	Seminole County	20.73	49.77	45.79	45.62	74.09
5	Atoka County	41.99	34.95	20.76	54.90	68.98
6	Coal County	87.87	0.00	35.37	52.89	68.31
7	Noble County	45.00	163.19	36.48	45.45	63.93
8	Ottawa County	67.74	27.48	24.82	22.12	56.91
9	Major County	83.67	69.44	27.84	56.09	55.64
10	Okfuskee County	53.27	35.74	98.34	18.01	54.92
Sub Rate 1.*	Top Ten Counties	89.04	83.15	84.05	75.22	68.09
Sub Rate 2.**	All Other Counties	20.93	19.54	18.62	19.13	18.41
Total Rate	All Counties	22.73	21.40	21.21	20.58	20.02

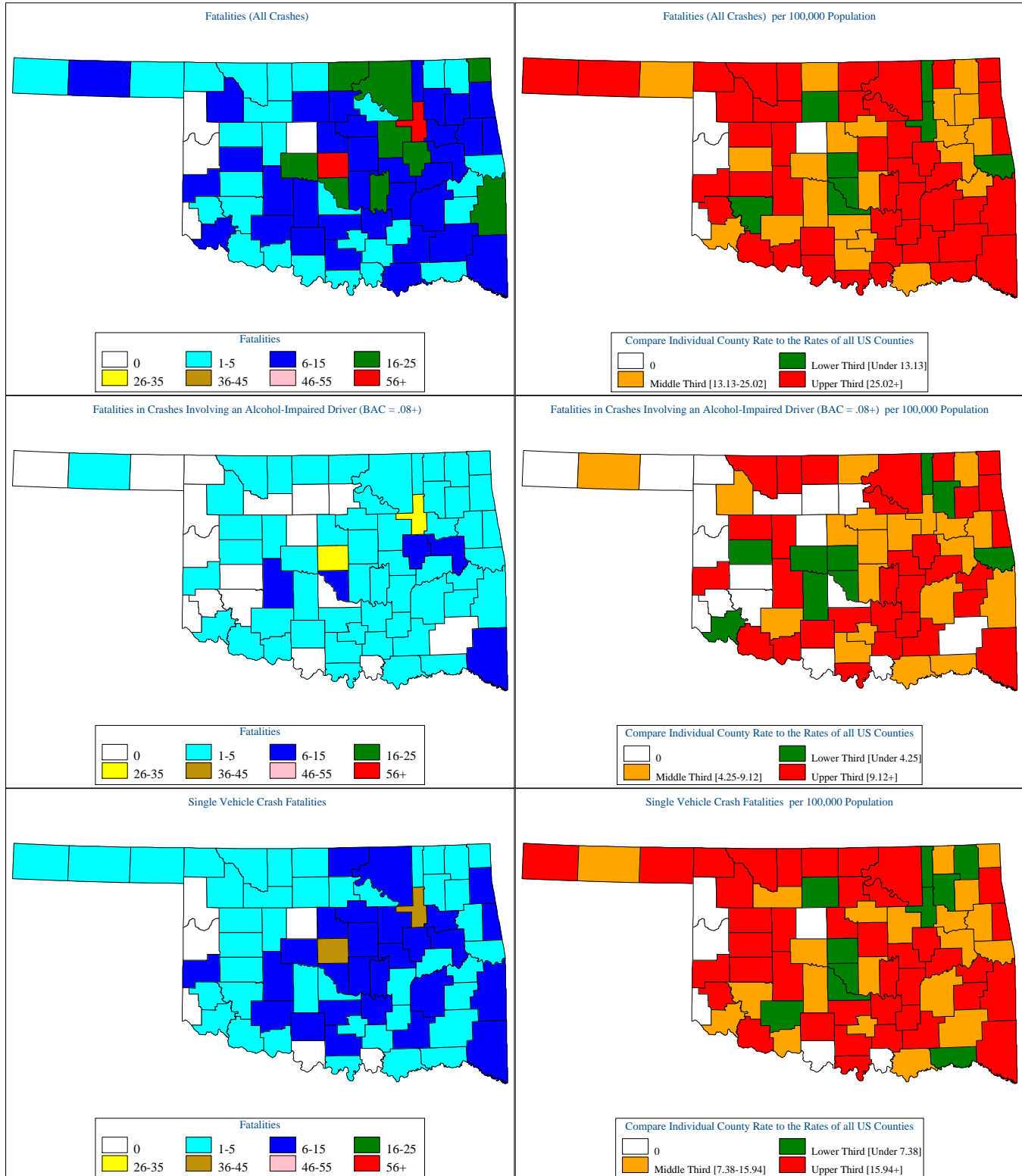
*This Sub Rate is the Rate for the Top Ten Counties

**This Sub Rate is the Rate for all Counties Outside the Top Ten

[Back To The Table of Contents](#)



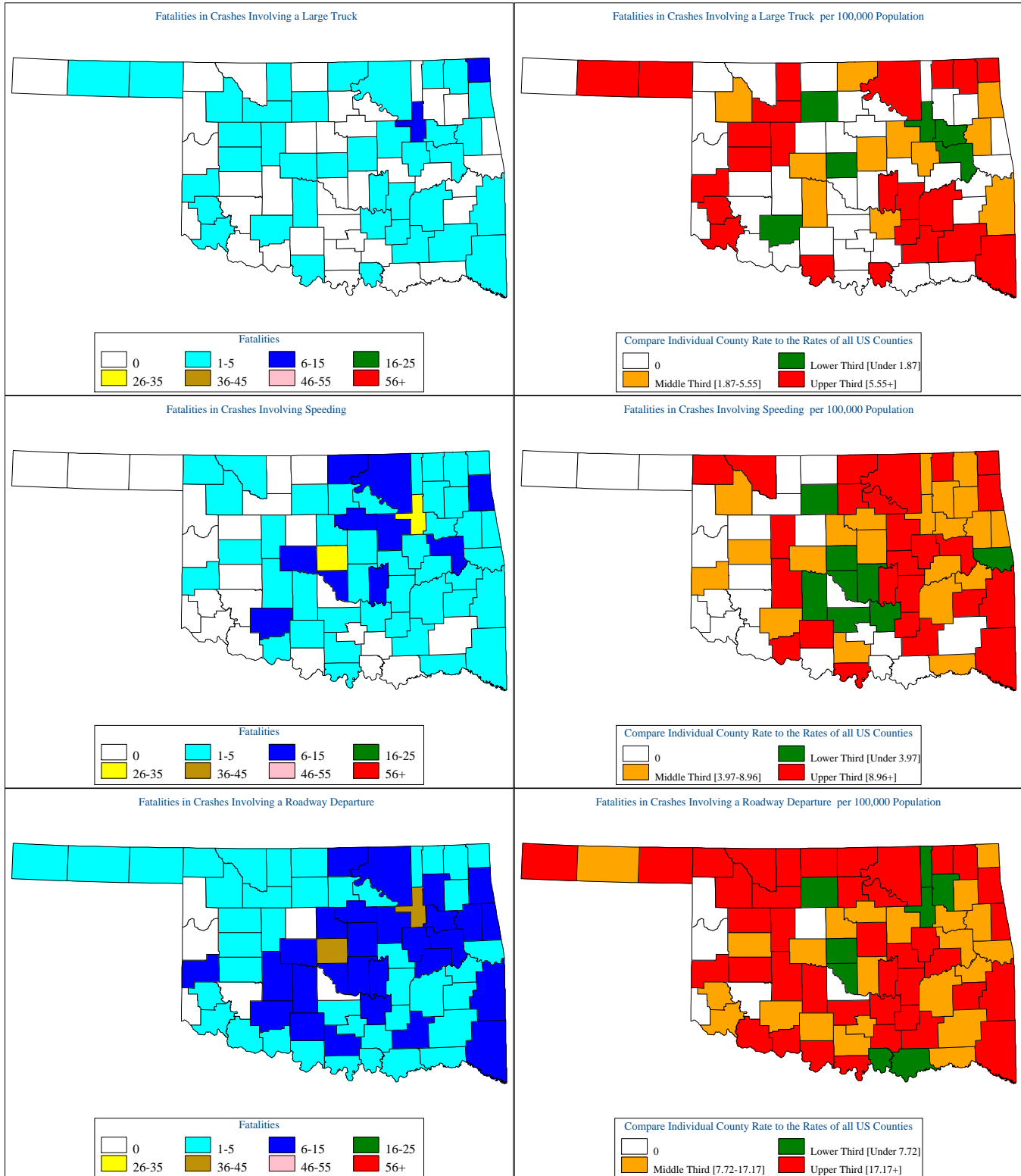
Oklahoma Motor Vehicle Crash Fatality Maps for 2009



[Back To The Table of Contents](#)



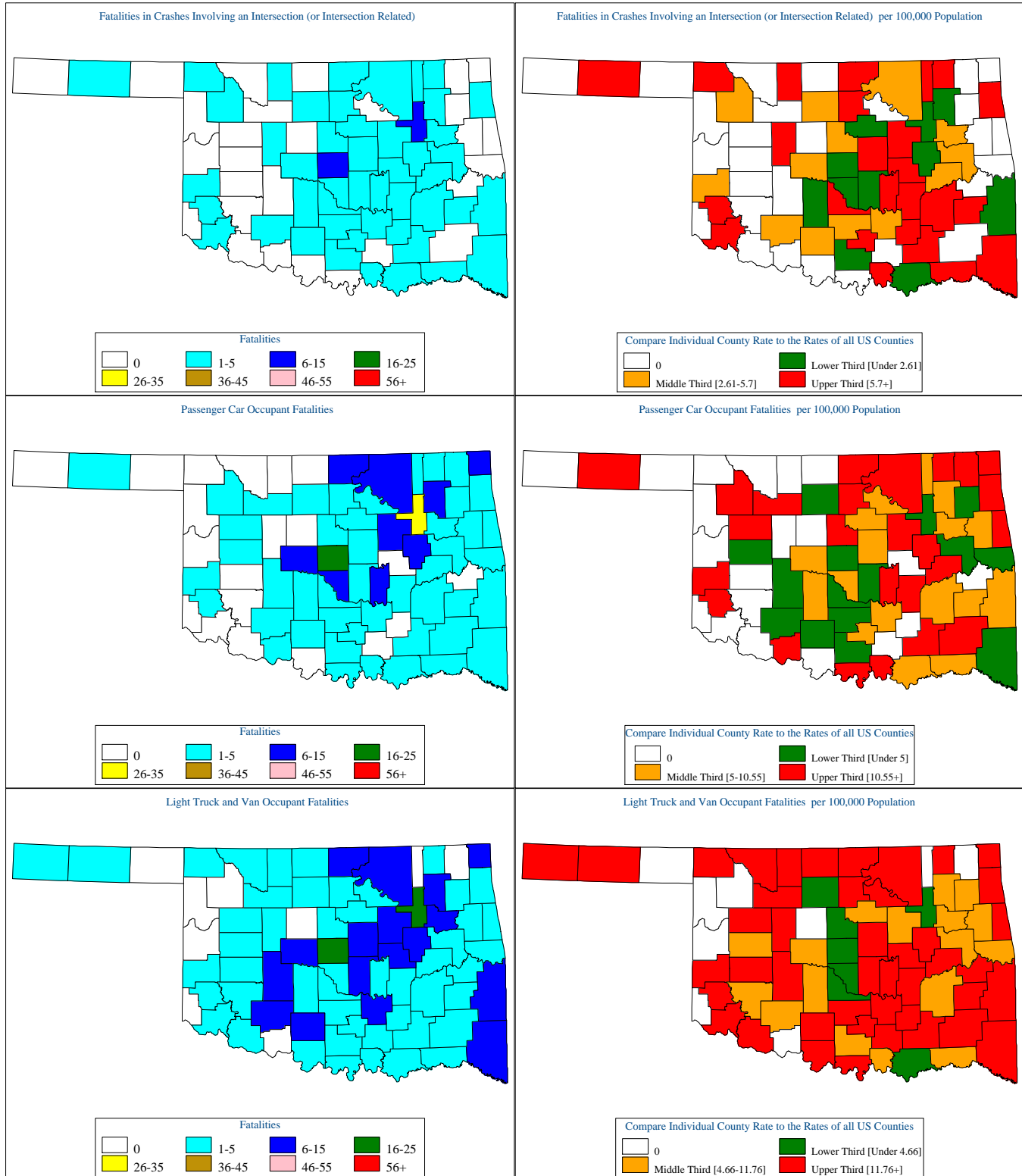
Oklahoma Motor Vehicle Crash Fatality Maps for 2009



[Back To The Table of Contents](#)



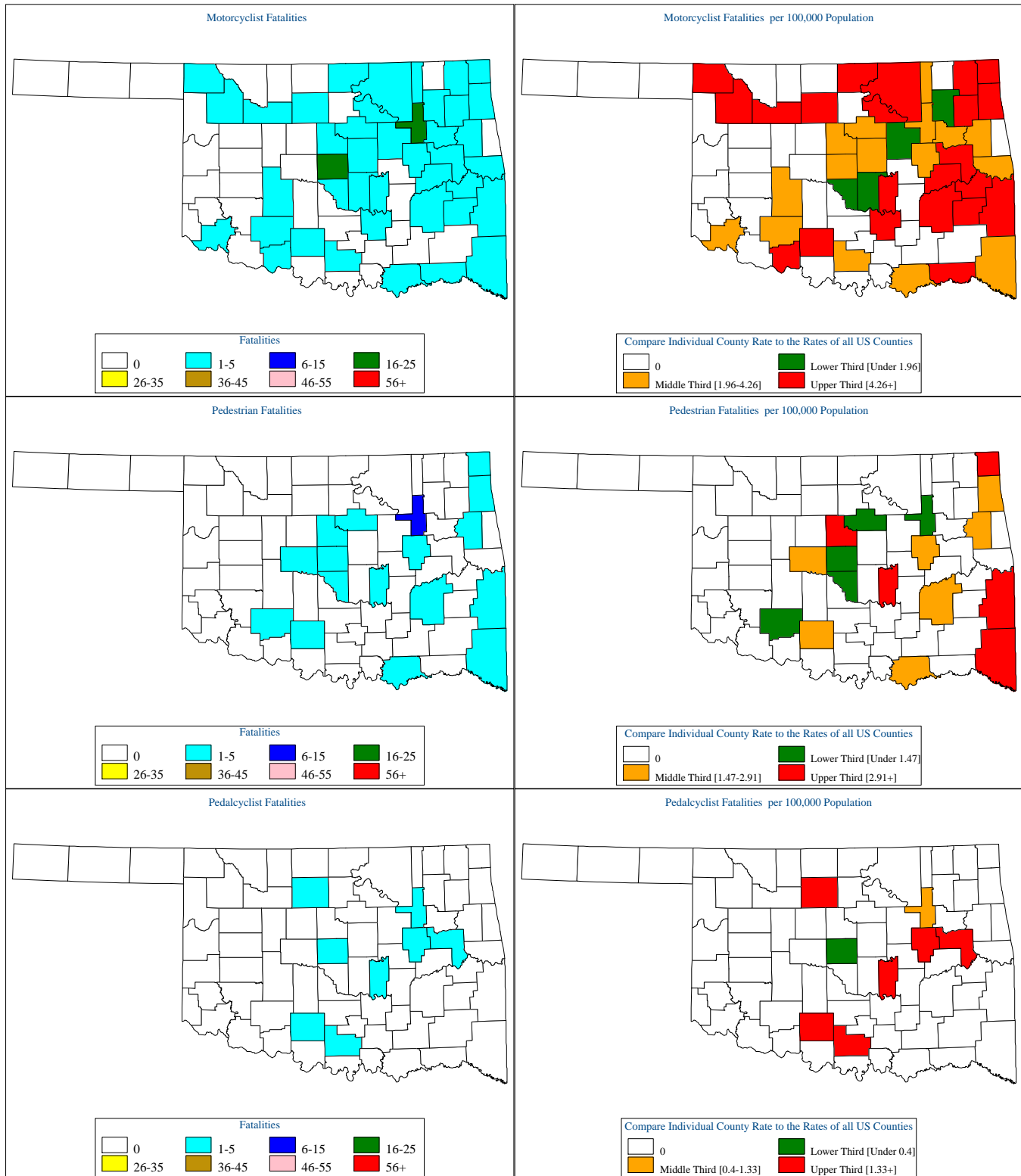
Oklahoma Motor Vehicle Crash Fatality Maps for 2009



[Back To The Table of Contents](#)



Oklahoma Motor Vehicle Crash Fatality Maps for 2009



[Back To The Table of Contents](#)