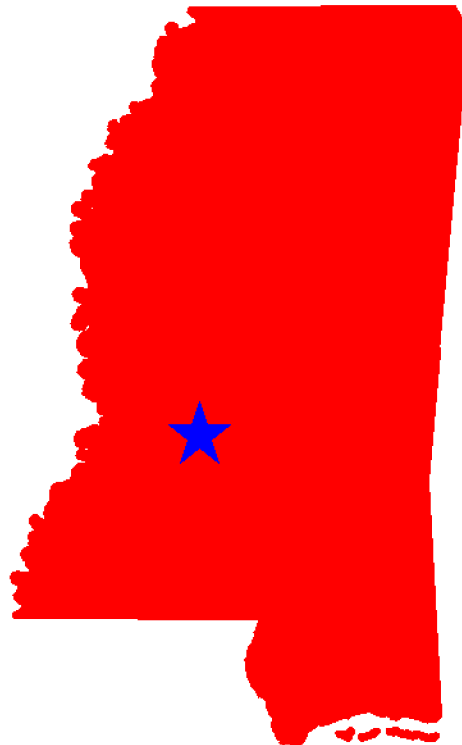




## Traffic Safety Facts Mississippi 2005-2009



This Report Contains Data From the Following Sources:

- Fatality Data - NCSA Fatality Analysis Reporting System (FARS): 2005-2008 Final File and 2009 Annual Report File (ARF)
- Observed Safety Belt Data - NCSA National Occupant Protection Use Survey (NOPUS) and the Mississippi State Survey
- Vehicle Miles of Travel Data and Motorcycle Registrations - Federal Highway Administration (FHWA)
- Population Data - U.S. Bureau of the Census



## Table of Contents

3. Traffic Safety Performance Measures
4. Fatality Rates: Mississippi , U.S. and Best State
5. Alcohol-Related Fatalities: Mississippi , U.S. and Best State (Old Definition)
6. Alcohol-Impaired Driving Fatalities: Mississippi , U.S. and Best State (New Definition)
7. Fatalities Per 100 Million VMT: Mississippi , U.S.
7. Alcohol-Impaired Driving Fatalities Per 100 Million VMT: Mississippi , U.S.
8. Blood Alcohol Concentration (BAC) Reporting Rates For Drivers/Motorcycle Rider (Operators) Involved in Fatal Crashes: Mississippi , U.S. and Best State
9. Front Seat Passenger Vehicle Occupants, Aged 5 and Over, by Restraint Use: Fatalities and Observed Mississippi , U.S. and Best State
10. Front Seat Passenger Vehicle Occupant Fatalities, Aged 5 and Over, by Percent Restraint Use: Mississippi , U.S.
10. Front Seat Passenger Vehicle Occupants Observed, Aged 5 and Over, by Percent Restraint Use: Mississippi , U.S.
11. Passenger Vehicle Occupant Fatalities Aged 5 and Above by Restraint Use and Lives Saved Estimates
11. Passenger Vehicle Occupant Fatalities Aged Under 5 by Restraint Use and Lives Saved Estimates
12. Motorcyclist Fatalities by Helmet Use and Lives Saved Estimates
13. Fatalities by Person Type
14. Fatalities by Crash Type
15. Motorcyclist Fatalities by Age
15. Motorcyclist Fatalities Per 100,000 Registered Motorcycles
16. Fatalities by Person Type and Race/Hispanic Origin
17. Top 10 Counties for Fatalities
18. Top 10 Counties for Fatalities: Year to Year Percent Change
19. Top 10 Counties for Fatality Rates
20. Motor Vehicle Crash Fatality Maps:  
Total Fatalities, Alcohol-Impaired Driving Fatalities, Single Vehicle Crash Fatalities
21. Motor Vehicle Crash Fatality Maps:  
Large Truck Crash Fatalities, Speeding Involved Fatalities, Roadway Departure Fatalities
22. Motor Vehicle Crash Fatality Maps:  
Intersection Fatalities, Passenger Car Occupants, Light Truck and Van Occupants
23. Motor Vehicle Crash Fatality Maps:  
Motorcyclist Fatalities, Pedestrian Fatalities, Pedestrian Fatalities



## Traffic Safety Performance (Core Outcome) Measures\* For Mississippi

Core Outcome Measures		Year				
		2005	2006	2007	2008	2009
<b>Traffic Fatalities</b>	<b>Total</b>	931	911	884	783	700
	<b>Rural</b>	765	673	629	627	507
	<b>Urban</b>	166	238	255	156	193
	<b>Unknown</b>	0	0	0	0	0
<b>Fatalities Per 100 Million Vehicle Miles Driven**</b>	<b>Total</b>	2.32	2.20	2.04	1.79	
	<b>Rural</b>	3.11	2.65	2.36	2.35	
	<b>Urban</b>	1.07	1.48	1.53	0.92	
<b>Passenger Vehicle Occupant Fatalities (All Seat Positions)</b>	<b>Total</b>	782	766	737	652	561
	<b>Restrained</b>	207	214	226	220	180
	<b>Unrestrained</b>	574	552	511	432	380
	<b>Unknown</b>	1	0	0	0	1
<b>Alcohol-Impaired Driving Fatalities (BAC=.08+)***</b>		322	335	316	251	234
<b>Speeding-Related Fatalities</b>		254	365	349	327	106
<b>Motorcyclist Fatalities</b>	<b>Total</b>	39	55	51	40	47
	<b>Helmeted</b>	28	44	33	32	41
	<b>Unhelmeted</b>	11	11	18	8	6
	<b>Unknown</b>	0	0	0	0	0
<b>Drivers Involved in Fatal Crashes</b>	<b>Total</b>	1,163	1,156	1,117	985	857
	<b>Aged Under 15</b>	3	4	6	4	6
	<b>Aged 15-20</b>	169	155	148	106	119
	<b>Aged Under 21</b>	172	159	154	110	125
	<b>Aged 21 and Over</b>	983	992	954	871	727
	<b>Unknown Age</b>	8	5	9	4	5
<b>Pedestrian Fatalities</b>		72	56	58	50	58

\*These Performance Measures Were Developed By The National Highway Traffic Safety Administration (NHTSA) and the Governors Highway Safety Association (GHSA) (See Publication: DOT HS 811 025)

\*\*2009 State Vehicle Miles Traveled (VMT) Data is Not Yet Available

\*\*\*Based on the BAC of All Involved Drivers and Motorcycle Riders (Operators) Only

[Back To The Table of Contents](#)



### Fatality Rates: Mississippi , U.S. and Best State

Year		Fatalities	Total Vehicle Miles Traveled (Millions)	Fatalities Per 100 Million Vehicle Miles Traveled	Total Population	Fatalities Per 100,000 Population
2005	Mississippi	931	40,154	2.32	2,900,116	32.10
	US	43,510	2,989,430	1.46	295,753,151	14.71
	Best State*			0.80		6.83
2006	Mississippi	911	41,499	2.20	2,897,150	31.44
	US	42,708	3,014,371	1.42	298,593,212	14.30
	Best State*			0.78		6.34
2007	Mississippi	884	43,337	2.04	2,921,723	30.26
	US	41,259	3,032,399	1.36	301,579,895	13.68
	Best State*			0.79		6.54
2008	Mississippi	783	43,711	1.79	2,940,212	26.63
	US	37,423	2,973,509	1.26	304,374,846	12.30
	Best State*			0.67		5.56
2009	Mississippi	700			2,951,996	23.71
	US	33,808	2,979,321	1.13	307,006,550	11.01
	Best State*					4.84

\*State (or States) With Lowest Rates: Lowest VMT and Population Rates Could Be in Different States

2009 National VMT is a Preliminary Estimate and Subject to Change

2009 State Vehicle Miles Traveled (VMT) Data is Not Yet Available

[Back To The Table of Contents](#)



Fatalities By The Highest Blood Alcohol Concentration (BAC) in the Crash\*\*:  
Mississippi , U.S. and Best State  
(Old Definition)

Year		Total Fatalities in all Crashes	Highest BAC level in the Crash					
			BAC = .01+			BAC = .08+		
			Number	Percent	Per 100 Million VMT	Number	Percent	Per 100 Million VMT
2005	Mississippi	931	390	42	0.97	346	37	0.86
	US	43,510	17,590	40	0.59	15,102	35	0.51
	Best State*			14	0.16		12	0.14
2006	Mississippi	911	390	43	0.94	351	39	0.85
	US	42,708	17,738	42	0.59	15,144	35	0.50
	Best State*			24	0.26		20	0.22
2007	Mississippi	884	384	43	0.89	336	38	0.78
	US	41,259	17,158	42	0.57	14,603	35	0.48
	Best State*			24	0.27		21	0.23
2008	Mississippi	783	318	41	0.73	267	34	0.61
	US	37,423	15,449	41	0.52	13,258	35	0.45
	Best State*			21	0.21		16	0.16
2009	Mississippi	700	285	41		255	36	
	US	33,808	14,188	42	0.48	12,233	36	0.41
	Best State*			23			18	

\*State (or States) With Lowest Percents: Lowest Percents Could Be in Different States

\*\*Based on the BAC of All Involved Drivers, Motorcycle Riders (Operators), Pedalcyclists and Pedestrians

2009 National VMT is a Preliminary Estimate and Subject to Change

2009 State Vehicle Miles Traveled (VMT) Data is Not Yet Available

[Back To The Table of Contents](#)



Alcohol-Impaired Driving Fatalities\*\*:  
Mississippi , U.S. and Best State  
(New Definition)

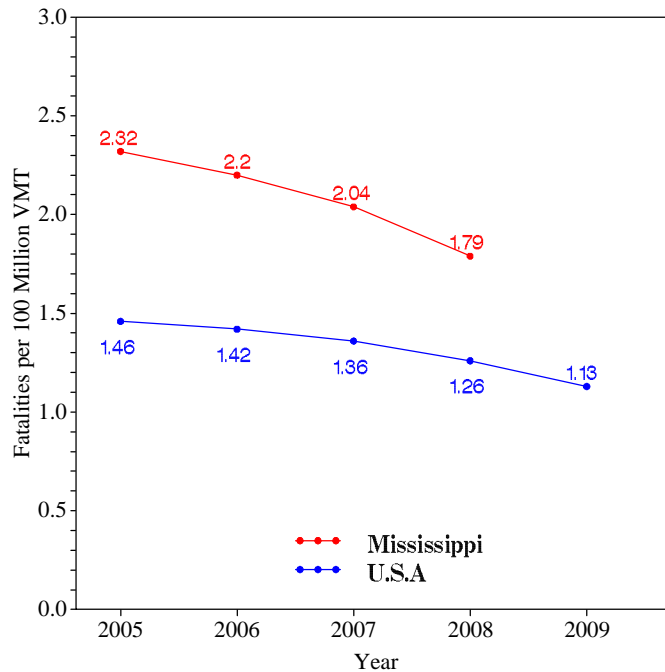
Year		Total Fatalities in all Crashes	Alcohol-Impaired Driving Fatalities (BAC = .08+)		
			Number	Percent	Per 100 Million VMT
2005	Mississippi	931	322	35	0.80
	US	43,510	13,582	31	0.45
	Best State*			12	0.13
2006	Mississippi	911	335	37	0.81
	US	42,708	13,491	32	0.45
	Best State*			18	0.20
2007	Mississippi	884	316	36	0.73
	US	41,259	13,041	32	0.43
	Best State*			19	0.21
2008	Mississippi	783	251	32	0.57
	US	37,423	11,711	31	0.39
	Best State*			16	0.16
2009	Mississippi	700	234	33	
	US	33,808	10,839	32	0.36
	Best State*			16	

\*State (or States) With Lowest Percents: Lowest Percents Could Be in Different States  
 \*\*Based on the BAC of All Involved Drivers and Motorcycle Riders (Operators) Only  
 2009 National VMT is a Preliminary Estimate and Subject to Change  
 2009 State Vehicle Miles Traveled (VMT) Data is Not Yet Available

[Back To The Table of Contents](#)

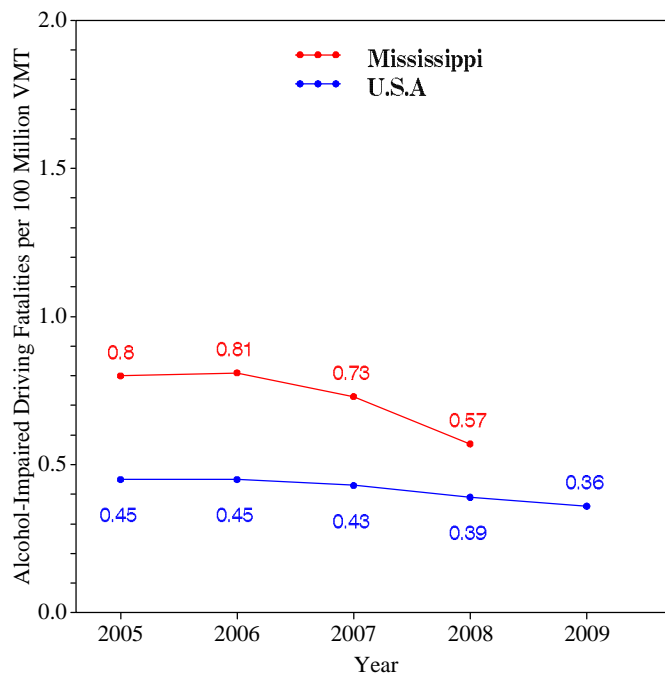


### Fatalities per 100 Million VMT



[Back To The Table of Contents](#)

### Alcohol-Impaired Driving Fatalities per 100 Million VMT



2009 National VMT is a Preliminary Estimate and Subject to Change  
2009 State Vehicle Miles Traveled (VMT) Data is Not Yet Available

[Back To The Table of Contents](#)



**Blood Alcohol Concentration (BAC) Reporting Rates  
For Drivers/Motorcycle Riders (Operators)  
Involved in Fatal Crashes:  
Mississippi , U.S. and Best State**

Year		Surviving Drivers/Motorcycle Riders			Killed Drivers/Motorcycle Riders			Total Drivers/Motorcycle Riders		
		Total	With Blood Alcohol Concentration (BAC) Results Reported to FARS		Total	With Blood Alcohol Concentration (BAC) Results Reported to FARS		Total	With Blood Alcohol Concentration (BAC) Results Reported to FARS	
			Number	Percent		Number	Percent		Number	Percent
2005	Mississippi	531	126	24	632	308	49	1,163	434	37
	US	31,729	7,415	23	27,491	18,773	68	59,220	26,188	44
	Best State*			77			98			84
2006	Mississippi	503	92	18	653	264	40	1,156	356	31
	US	30,498	7,482	25	27,348	18,911	69	57,846	26,393	46
	Best State*			81			99			85
2007	Mississippi	476	86	18	641	269	42	1,117	355	32
	US	29,449	7,631	26	26,570	19,434	73	56,019	27,065	48
	Best State*			82			100			84
2008	Mississippi	417	78	19	568	265	47	985	343	35
	US	26,162	7,656	29	24,254	18,415	76	50,416	26,071	52
	Best State*			81			99			85
2009	Mississippi	370	41	11	487	104	21	857	145	17
	US	23,432	6,372	27	21,798	15,505	71	45,230	21,877	48
	Best State*			86			97			90

\*State (or States) With Highest Percents: Highest Percents Could Be in Different States

[Back To The Table of Contents](#)



Daytime Front Seat (Outboard Only) Passenger Vehicle Occupants, Aged 5 and Over, by Restraint Use: Fatalities and Observed Mississippi , U.S. and Best State

Table with 3 columns: Year, Category (Mississippi, US, Best State\*), Fatalities - Restrained\*\* (Percent), and Observed - Restrained\*\*\* (Percent). Rows are grouped by year from 2005 to 2009.

\*State With Highest Percent. Fatal Crash and Observed Percents Can Be Different States

\*\*Percent Based Only Where Restraint Use Was Known

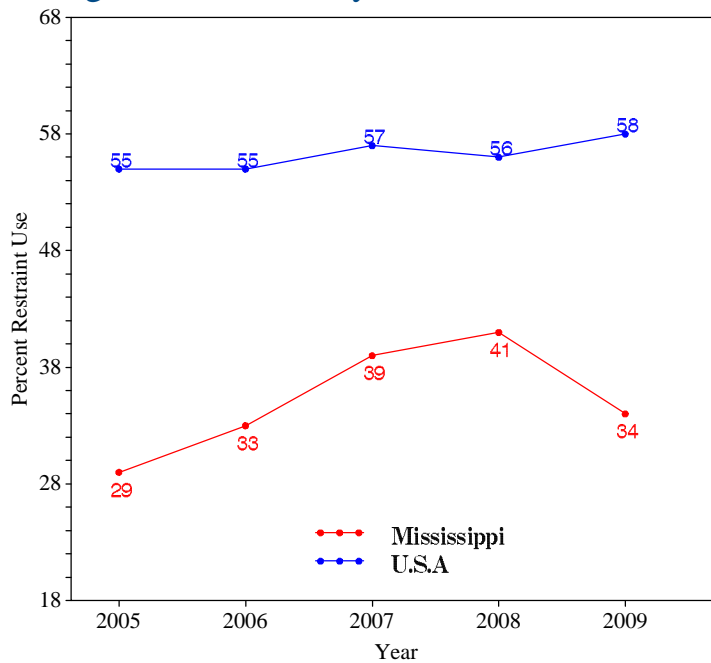
\*\*\*USA Data: National Occupant Protection Use Survey. Mississippi Data: State Survey

Note: The Purpose of this Table is to Compare (as closely as possible) the Use of Restraint Systems by Fatally Injured Occupants with Occupants in all Driving Situations

Back To The Table of Contents



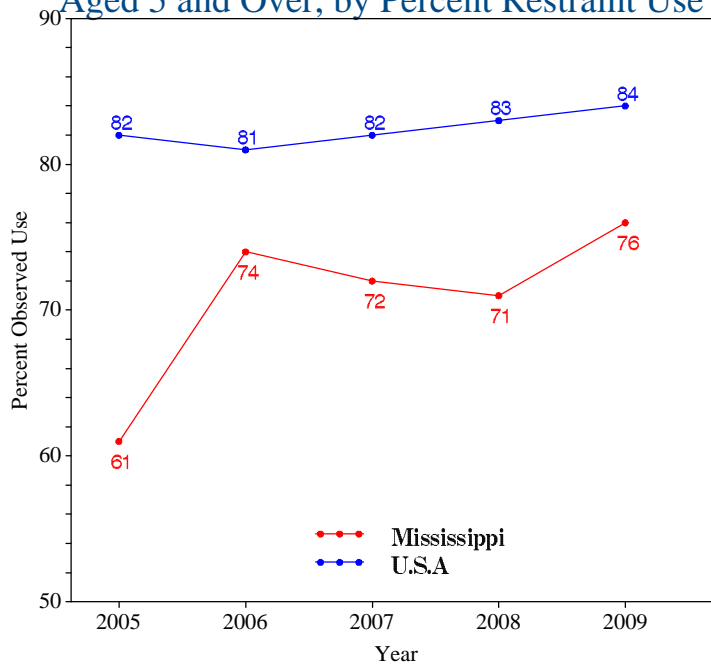
### Daytime Front Seat (Outboard Only) Passenger Vehicle Occupant Fatalities, Aged 5 and Over, by Percent Restraint Use\*



\*Percent Based Only Where Restraint Use Was Known

[Back To The Table of Contents](#)

### Daytime Front Seat (Outboard Only) Passenger Vehicle Occupants Observed, Aged 5 and Over, by Percent Restraint Use\*



\*USA Data: National Occupant Protection Use Survey. Mississippi Data: State Survey

[Back To The Table of Contents](#)



### Passenger Vehicle Occupant Fatalities Age 5 and Above by Restraint Use and Lives Saved Estimates

Year	Fatalities Age 5 and Above					Lives Saved Estimates**	
	Total	Restrained	Unrestrained	Unknown Restraint Use	Percent Known Restrained*	Lives Saved at Current Belt Use	Additional Lives Savable at 100% Belt Usage
2005	762	199	562	1	26	238	233
2006	751	205	546	0	27	262	180
2007	728	223	505	0	31	277	204
2008	644	214	430	0	33	260	173
2009	553	176	376	1	32	205	134

\*Percent Based Only Where Restraint Use Was Known

\*\*Lives Saved Estimates (Sum of columns may not equal other published numbers due to rounding)

[Back To The Table of Contents](#)

### Passenger Vehicle Occupant Fatalities Age 4 and Under by Restraint Use and Lives Saved Estimates

Year	Fatalities Age 4 and Under					Lives Saved Estimates**
	Total	Restrained	Unrestrained	Unknown Restraint Use	Percent Known Restrained*	Lives Saved at Current Seat Belt and Child Safety Seat Usage
2005	19	8	11	0	42	9
2006	15	9	6	0	60	11
2007	9	3	6	0	33	3
2008	8	6	2	0	75	7
2009	8	4	4	0	50	5

\*Percent Based Only Where Restraint Use Was Known

\*\*Lives Saved Estimates

[Back To The Table of Contents](#)



### Motorcyclist Fatalities by Helmet Use and Lives Saved Estimates

Year	Fatalities					Lives Saved Estimates**	
	Total	Helmeted	Unhelmeted	Unknown Helmet Use	Percent Known Helmeted*	Lives Saved at Current Helmet Use	Additional Lives Savable at 100% Helmet Usage
2005	39	28	11	0	72	17	4
2006	55	44	11	0	80	26	4
2007	51	33	18	0	65	20	7
2008	40	32	8	0	80	19	3
2009	47	41	6	0	87	24	2

\*Percent Based Only Where Helmet Use Was Known

\*\*Lives Saved Estimates (Sum of columns may not equal other published numbers due to rounding)

[Back To The Table of Contents](#)



## Fatalities by Person Type

Person Type		2005		2006		2007		2008		2009	
		#	%*	#	%*	#	%*	#	%*	#	%*
<b>Occupants</b>	<b>Passenger Car</b>	452	49	396	43	386	44	367	47	311	44
	<b>Light Truck - Pickup</b>	195	21	230	25	206	23	159	20	143	20
	<b>Light Truck - Utility</b>	103	11	104	11	121	14	110	14	84	12
	<b>Light Truck - Van</b>	32	3	36	4	24	3	16	2	23	3
	<b>Large Truck</b>	18	2	18	2	11	1	13	2	9	1
	<b>Bus</b>	0	0	0	0	0	0	3	0	2	0
	<b>Other/Unknown Occupants</b>	15	2	12	1	19	2	20	3	13	2
	<b><i>Total Occupants</i></b>	<b>815</b>	<b>88</b>	<b>796</b>	<b>87</b>	<b>767</b>	<b>87</b>	<b>688</b>	<b>88</b>	<b>585</b>	<b>84</b>
<b>Motorcyclists</b>	<b><i>Total Motorcyclists</i></b>	<b>39</b>	<b>4</b>	<b>55</b>	<b>6</b>	<b>51</b>	<b>6</b>	<b>40</b>	<b>5</b>	<b>47</b>	<b>7</b>
<b>Nonoccupants</b>	<b>Pedestrian</b>	72	8	56	6	58	7	50	6	58	8
	<b>Bicyclist and Other Cyclist</b>	5	1	3	0	8	1	4	1	10	1
	<b>Other/Unknown Nonoccupants</b>	0	0	1	0	0	0	1	0	0	0
	<b><i>Total Nonoccupants</i></b>	<b>77</b>	<b>8</b>	<b>60</b>	<b>7</b>	<b>66</b>	<b>7</b>	<b>55</b>	<b>7</b>	<b>68</b>	<b>10</b>
<b>Total</b>	<b><i>Total</i></b>	<b>931</b>	<b>100</b>	<b>911</b>	<b>100</b>	<b>884</b>	<b>100</b>	<b>783</b>	<b>100</b>	<b>700</b>	<b>100</b>

\*Sum of Percents May Not = 100 Due to Individual Cell Rounding

[Back To The Table of Contents](#)



### Fatalities by Crash Type

Crash Type	2005	2006	2007	2008	2009
<b>Total Fatalities (All Crashes)*</b>	931	911	884	783	700
<b>- (1) Single Vehicle</b>	575	535	547	503	455
<b>- (2) Involving a Large Truck</b>	91	90	75	70	61
<b>- (3) Involving Speeding</b>	254	365	349	327	106
<b>- (4) Involving a Rollover</b>	163	187	167	141	168
<b>- (5) Involving a Roadway Departure</b>	296	265	319	310	255
<b>- (6) Involving an Intersection (or Intersection Related)</b>	190	137	139	103	137

(1) Crash Involved Only One Coded Vehicle

(2) Crash Involved at Least One Large Truck

(3) Crash Involved at Least One Vehicle Speeding

(4) Crash Involved at Least One Vehicle That Rolled Over

(5) Crash Involved at Least One Vehicle That Departed the Roadway (FHWA Definition)

(6) Crash Occured Within an Intersection or Within the Approach to an Intersection

\*A Fatality Can Be in More Than One Category. Therefore Sum of the Individual Cells Will Not Equal the Total Due to Double Counting

[Back To The Table of Contents](#)



### Motorcyclist Fatalities by Age

Year	Age						Total
	<20	20-29	30-39	40-49	50-59	>59	
2005	3	10	9	10	3	4	39
2006	0	14	10	18	8	5	55
2007	6	12	13	8	10	2	51
2008	3	10	10	8	6	3	40
2009	2	9	12	10	7	7	47

[Back To The Table of Contents](#)

### Motorcyclist Fatalities Per 100,000 Registered Motorcycles

Year	Motorcyclist Fatalities	Total Motorcycle Registrations*	Motorcyclist Fatalities Per 100,000 Motorcycle Registrations
2005	39	27,318	142.8
2006	55	27,553	199.6
2007	51	27,777	183.6
2008	40	28,171	142.0
2009	47		

\*Data Source: FHWA

\*2009 Motorcycle Registrations are Not Yet Available

[Back To The Table of Contents](#)



### Fatalities by Person Type and Race/Hispanic Origin

Person Type by Race/Hispanic Origin		2005	2006	2007	2008
<b>Occupants (All Vehicle Types)</b>	<b>Hispanic</b>	28	41	40	30
	<b>White Non-Hispanic</b>	514	522	519	464
	<b>Black, Non-Hispanic</b>	307	282	256	231
	<b>American Indian, Non-Hispanic/Unknown</b>	1	3	1	1
	<b>Asian, Non-Hispanic/Unknown</b>	2	0	0	0
	<b>Pacific Islander, Non-Hispanic/Unknown</b>	1	0	0	1
	<b>All Other Non-Hispanic or Race</b>	1	3	2	1
	<b>Total</b>	854	851	818	728
<b>Non-Occupants (Pedestrians, Pedalcyclists and Other/Unknown NonOccupants)</b>					
	<b>Hispanic</b>	2	1	6	4
	<b>White Non-Hispanic</b>	52	31	31	23
	<b>Black, Non-Hispanic</b>	23	28	29	28
	<b>American Indian, Non-Hispanic/Unknown</b>	0	0	0	0
	<b>Asian, Non-Hispanic/Unknown</b>	0	0	0	0
	<b>Pacific Islander, Non-Hispanic/Unknown</b>	0	0	0	0
	<b>All Other Non-Hispanic or Race</b>	0	0	0	0
<b>Total</b>	77	60	66	55	
<b>Total</b>	931	911	884	783	

2009 Race/Hispanic Origin Data is Not Yet Complete

[Back To The Table of Contents](#)



### 5 Year Trend For The Top 10 Counties of 2009 - Fatalities

Counties by 2009 Ranking		Fatalities					Percent of Total				
		2005	2006	2007	2008	2009	2005	2006	2007	2008	2009
1	Hinds County	55	46	81	45	53	6	5	9	6	8
2	Desoto County	26	31	35	30	31	3	3	4	4	4
3	Harrison County	39	47	50	30	29	4	5	6	4	4
4	Forrest County	35	34	26	19	24	4	4	3	2	3
5	Jackson County	35	54	26	25	22	4	6	3	3	3
6	Rankin County	46	26	26	29	19	5	3	3	4	3
7	Tate County	7	15	8	9	19	1	2	1	1	3
8	Jones County	22	30	24	26	18	2	3	3	3	3
9	Washington County	14	18	9	9	18	2	2	1	1	3
10	Panola County	29	12	15	18	17	3	1	2	2	2
<b>Sub Total 1.*</b>	<b>Top Ten Counties</b>	333	336	343	276	250	36	37	39	35	36
<b>Sub Total 2.**</b>	<b>All Other Counties</b>	598	575	541	507	450	64	63	61	65	64
<b>Total</b>	<b>All Counties</b>	931	911	884	783	700	100	100	100	100	100

\*This Sub Total is the Total for the Top Ten Counties

\*\*This Sub Total is the Total for all Counties Outside the Top Ten

[Back To The Table of Contents](#)



## 5 Year Trend For The Top 10 Counties of 2009 - Fatalities Year to Year Percent Change

Counties by 2009 Ranking		Fatalities					Percent Change From Previous Year			
		2005	2006	2007	2008	2009	2006	2007	2008	2009
1	Hinds County	55	46	81	45	53	-16	76	-44	18
2	Desoto County	26	31	35	30	31	19	13	-14	3
3	Harrison County	39	47	50	30	29	21	6	-40	-3
4	Forrest County	35	34	26	19	24	-3	-24	-27	26
5	Jackson County	35	54	26	25	22	54	-52	-4	-12
6	Rankin County	46	26	26	29	19	-43	0	12	-34
7	Tate County	7	15	8	9	19	114	-47	13	111
8	Jones County	22	30	24	26	18	36	-20	8	-31
9	Washington County	14	18	9	9	18	29	-50	0	100
10	Panola County	29	12	15	18	17	-59	25	20	-6
<b>Sub Total 1.*</b> <i>Top Ten Counties</i>		333	336	343	276	250	1	2	-20	-9
<b>Sub Total 2.**</b> <i>All Other Counties</i>		598	575	541	507	450	-4	-6	-6	-11
<b>Total</b> <i>All Counties</i>		931	911	884	783	700	-2	-3	-11	-11

\*This Sub Total is the Total for the Top Ten Counties

\*\*This Sub Total is the Total for all Counties Outside the Top Ten

[Back To The Table of Contents](#)



## 5 Year Trend For The Top 10 Counties of 2009 - Fatality Rates

Median Rate for all U.S. Counties: 18.23

Counties by 2009 Ranking		Fatalities Per 100,000 Population				
		2005	2006	2007	2008	2009
1	Covington County	94.87	64.32	59.11	48.81	73.01
2	Tate County	26.60	56.22	29.73	33.08	69.50
3	Holmes County	72.83	43.75	14.69	48.73	64.07
4	Jefferson Davis County	70.12	62.04	47.20	15.85	63.78
5	Montgomery County	103.48	0.00	17.41	26.66	62.90
6	Issaquena County	110.07	228.31	119.98	0.00	62.03
7	Humphreys County	39.39	49.74	60.47	0.00	61.17
8	Amite County	52.45	22.20	15.01	37.76	53.69
9	Coahoma County	38.92	46.57	14.52	36.79	48.26
10	Panola County	83.03	34.29	42.60	50.90	48.23
	<b>Sub Rate 1.*</b> <i>Top Ten Counties</i>	84.66	72.04	70.67	68.74	59.39
	<b>Sub Rate 2.**</b> <i>All Other Counties</i>	29.19	28.95	28.11	23.88	21.42
	<b>Total Rate</b> <i>All Counties</i>	32.10	31.44	30.26	26.63	23.71

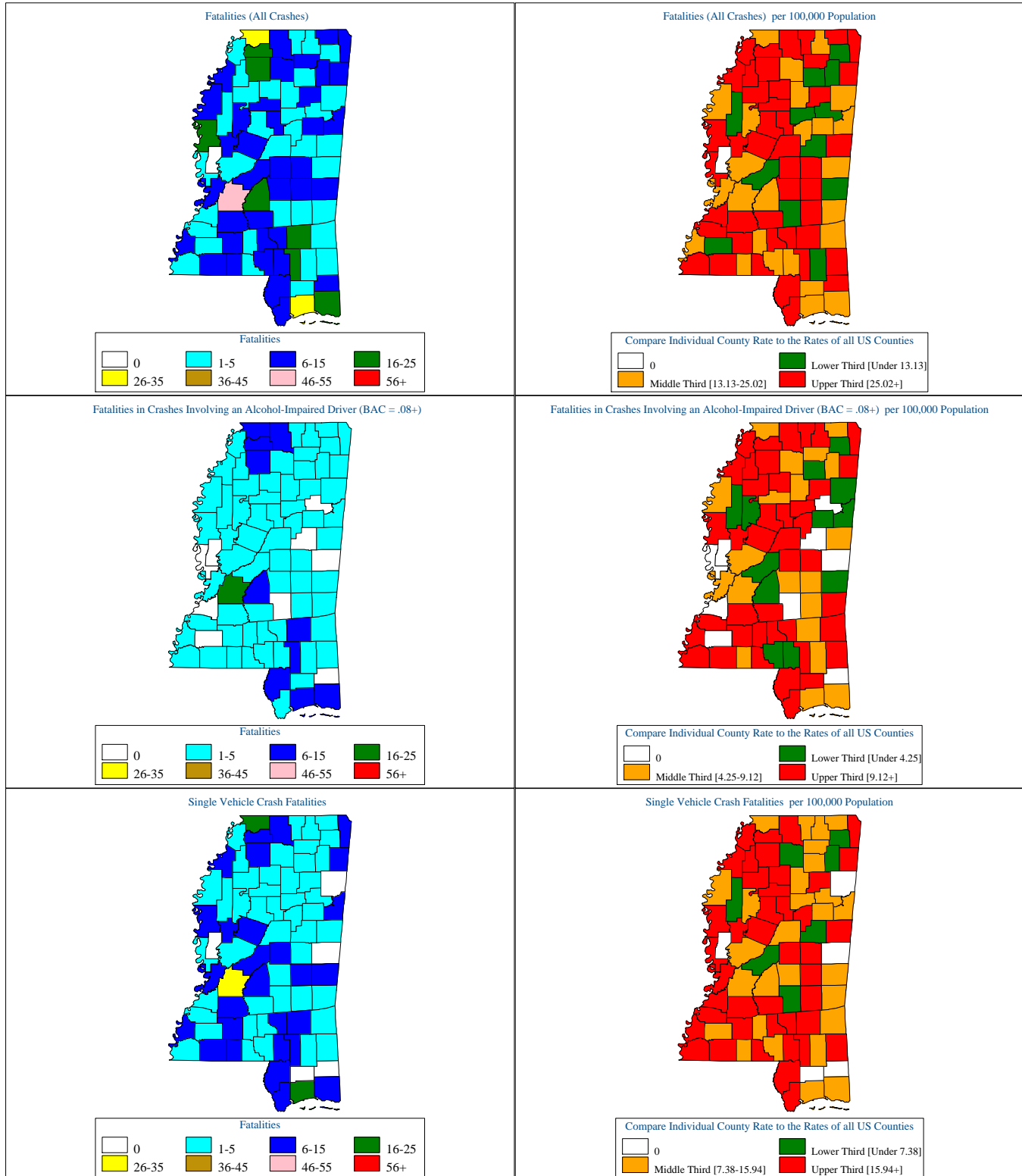
\*This Sub Rate is the Rate for the Top Ten Counties

\*\*This Sub Rate is the Rate for all Counties Outside the Top Ten

[Back To The Table of Contents](#)



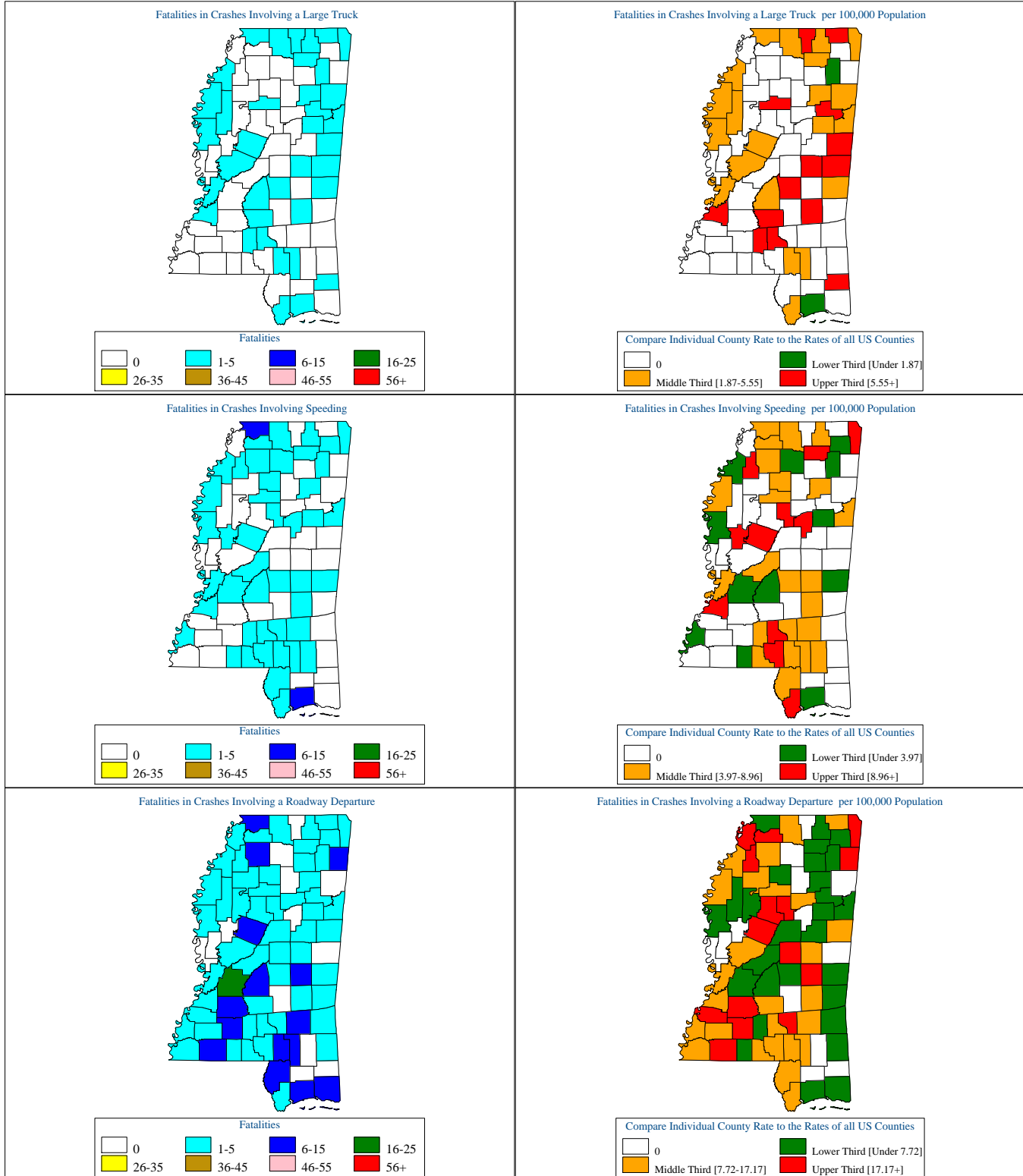
### Mississippi Motor Vehicle Crash Fatality Maps for 2009



[Back To The Table of Contents](#)



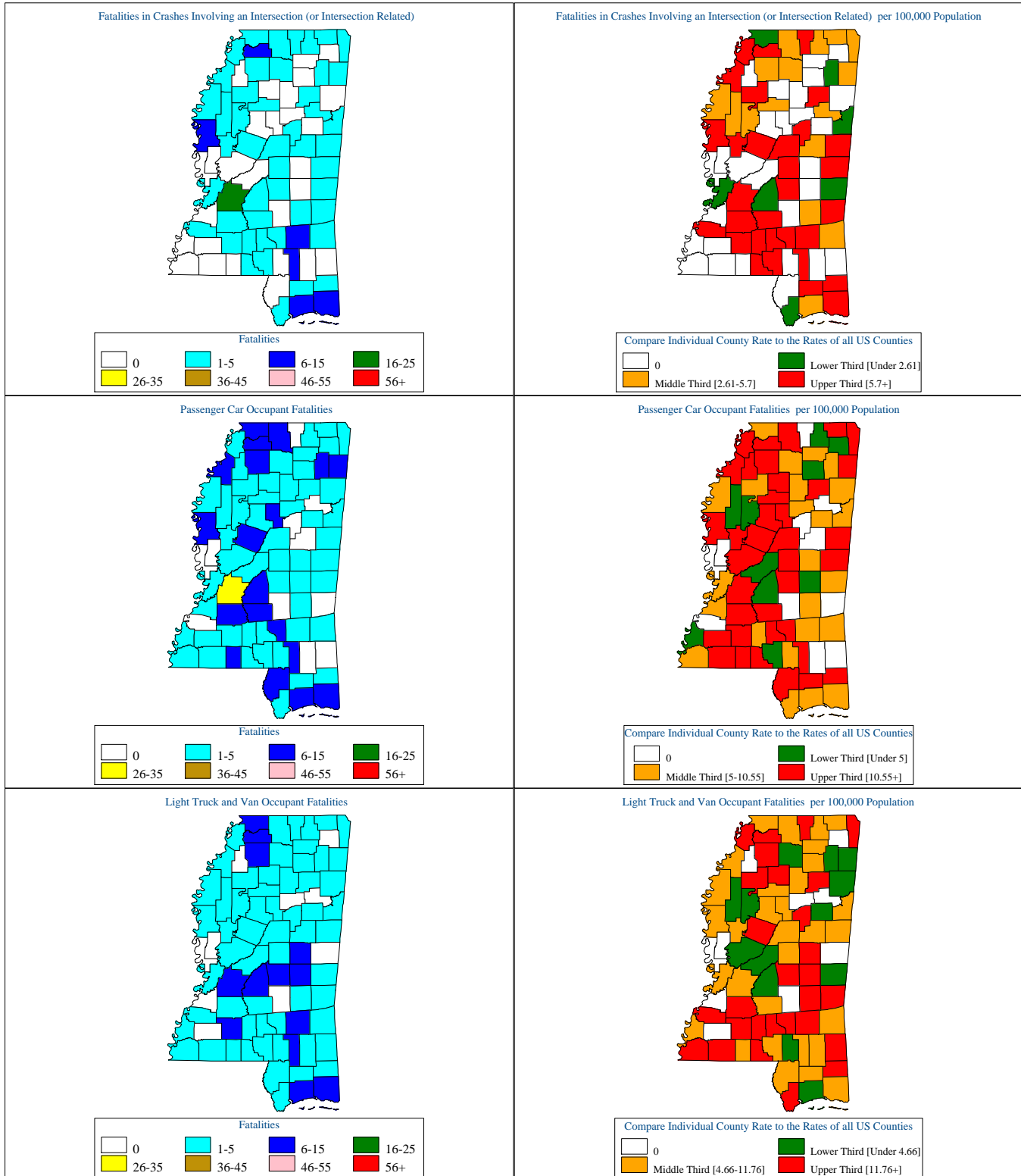
### Mississippi Motor Vehicle Crash Fatality Maps for 2009



[Back To The Table of Contents](#)



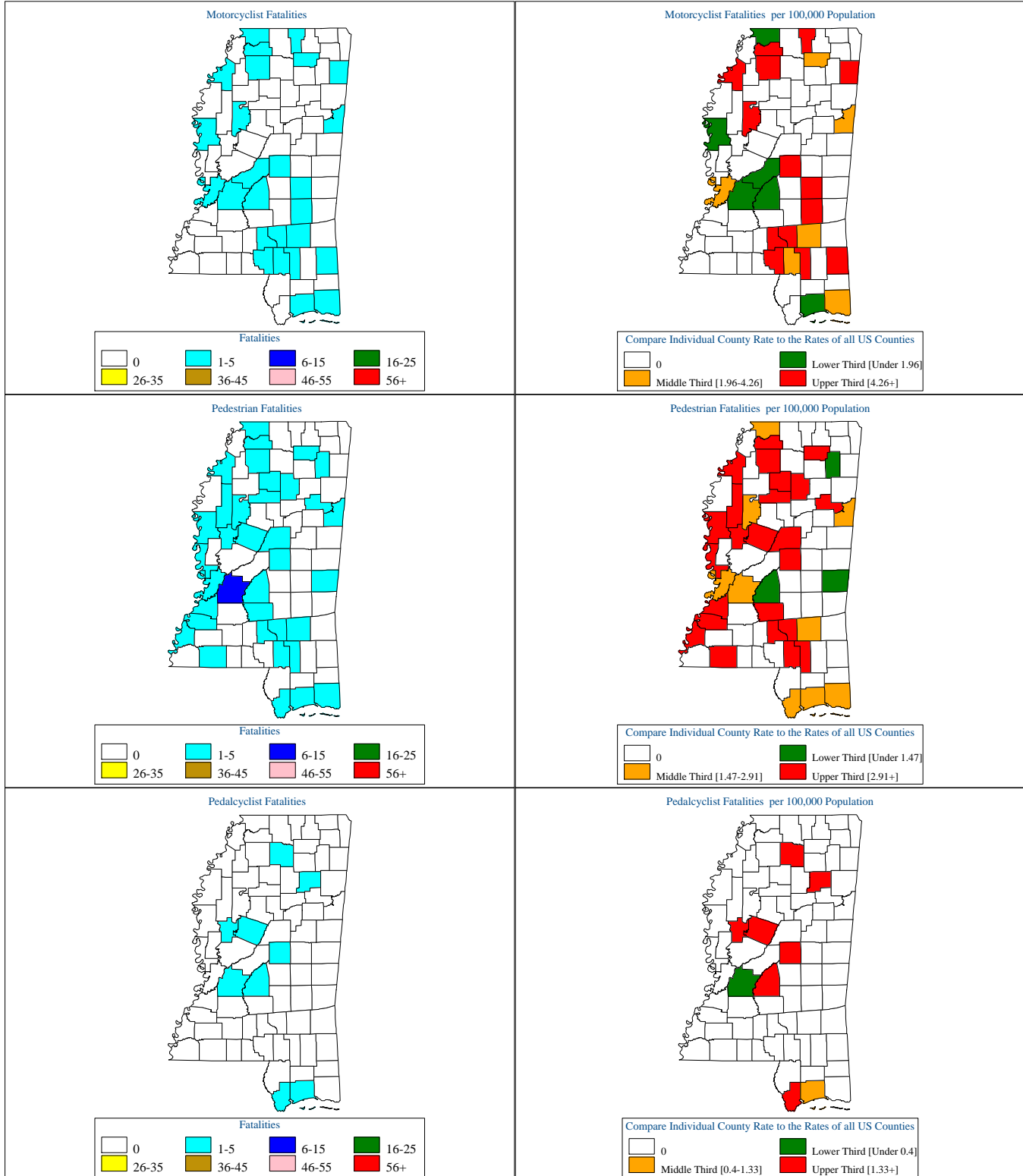
### Mississippi Motor Vehicle Crash Fatality Maps for 2009



[Back To The Table of Contents](#)



### Mississippi Motor Vehicle Crash Fatality Maps for 2009



[Back To The Table of Contents](#)