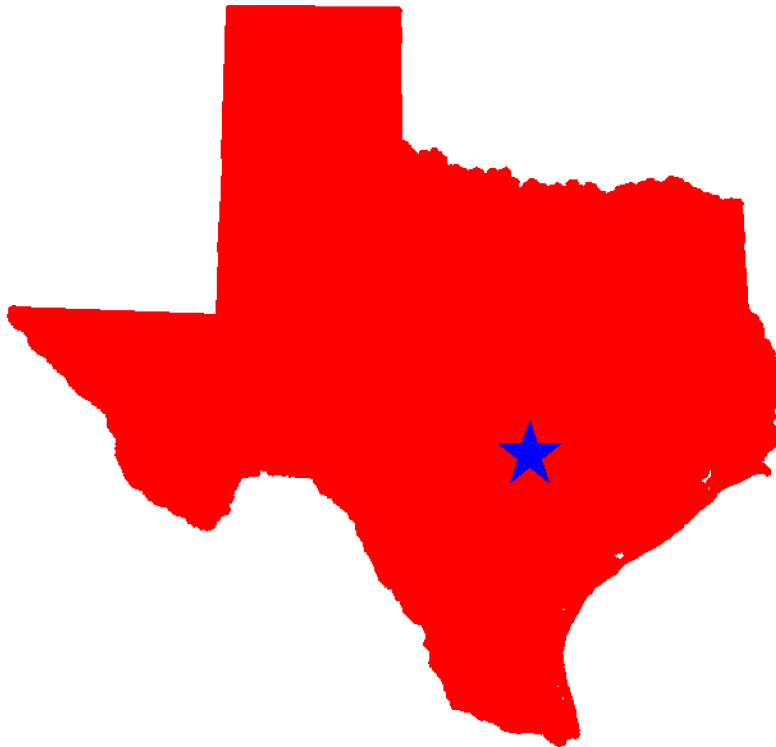




Traffic Safety Facts Texas 2005-2009



This Report Contains Data From the Following Sources:

- Fatality Data - NCSA Fatality Analysis Reporting System (FARS): 2005-2008 Final File and 2009 Annual Report File (ARF)
- Observed Safety Belt Data - NCSA National Occupant Protection Use Survey (NOPUS) and the Texas State Survey
- Vehicle Miles of Travel Data and Motorcycle Registrations - Federal Highway Administration (FHWA)
- Population Data - U.S. Bureau of the Census



Table of Contents

3. Traffic Safety Performance Measures
4. Fatality Rates: Texas , U.S. and Best State
5. Alcohol-Related Fatalities: Texas , U.S. and Best State (Old Definition)
6. Alcohol-Impaired Driving Fatalities: Texas , U.S. and Best State (New Definition)
7. Fatalities Per 100 Million VMT: Texas , U.S.
7. Alcohol-Impaired Driving Fatalities Per 100 Million VMT: Texas , U.S.
8. Blood Alcohol Concentration (BAC) Reporting Rates For Drivers/Motorcycle Rider (Operators) Involved in Fatal Crashes: Texas , U.S. and Best State
9. Front Seat Passenger Vehicle Occupants, Aged 5 and Over, by Restraint Use: Fatalities and Observed Texas , U.S. and Best State
10. Front Seat Passenger Vehicle Occupant Fatalities, Aged 5 and Over, by Percent Restraint Use: Texas , U.S.
10. Front Seat Passenger Vehicle Occupants Observed, Aged 5 and Over, by Percent Restraint Use: Texas , U.S.
11. Passenger Vehicle Occupant Fatalities Aged 5 and Above by Restraint Use and Lives Saved Estimates
11. Passenger Vehicle Occupant Fatalities Aged Under 5 by Restraint Use and Lives Saved Estimates
12. Motorcyclist Fatalities by Helmet Use and Lives Saved Estimates
13. Fatalities by Person Type
14. Fatalities by Crash Type
15. Motorcyclist Fatalities by Age
15. Motorcyclist Fatalities Per 100,000 Registered Motorcycles
16. Fatalities by Person Type and Race/Hispanic Origin
17. Top 10 Counties for Fatalities
18. Top 10 Counties for Fatalities: Year to Year Percent Change
19. Top 10 Counties for Fatality Rates
20. Motor Vehicle Crash Fatality Maps:
Total Fatalities, Alcohol-Impaired Driving Fatalities, Single Vehicle Crash Fatalities
21. Motor Vehicle Crash Fatality Maps:
Large Truck Crash Fatalities, Speeding Involved Fatalities, Roadway Departure Fatalities
22. Motor Vehicle Crash Fatality Maps:
Intersection Fatalities, Passenger Car Occupants, Light Truck and Van Occupants
23. Motor Vehicle Crash Fatality Maps:
Motorcyclist Fatalities, Pedestrian Fatalities, Pedestrian Fatalities



Traffic Safety Performance (Core Outcome) Measures* For Texas

Core Outcome Measures		Year				
		2005	2006	2007	2008	2009
Traffic Fatalities	Total	3,536	3,531	3,466	3,476	3,071
	Rural	1,974	1,998	1,894	1,761	1,642
	Urban	1,557	1,532	1,565	1,629	1,414
	Unknown	5	1	7	86	15
Fatalities Per 100 Million Vehicle Miles Driven**	Total	1.50	1.48	1.42	1.48	
	Rural	2.36	2.37	2.20	2.50	
	Urban	1.03	1.00	0.99	0.99	
Passenger Vehicle Occupant Fatalities (All Seat Positions)	Total	2,545	2,601	2,466	2,314	2,155
	Restrained	1,291	1,280	1,269	1,148	1,043
	Unrestrained	1,203	1,147	1,013	979	947
	Unknown	51	174	184	187	165
Alcohol-Impaired Driving Fatalities (BAC=.08+)**		1,320	1,400	1,333	1,310	1,235
Speeding-Related Fatalities		1,439	1,496	1,380	1,455	1,228
Motorcyclist Fatalities	Total	364	353	407	524	426
	Helmeted	146	128	158	194	147
	Unhelmeted	214	220	239	321	275
	Unknown	4	5	10	9	4
Drivers Involved in Fatal Crashes	Total	4,774	4,741	4,718	4,708	4,163
	Aged Under 15	14	12	7	8	6
	Aged 15-20	622	637	591	594	522
	Aged Under 21	636	649	598	602	528
	Aged 21 and Over	4,040	3,980	4,011	3,996	3,556
	Unknown Age	98	112	109	110	79
Pedestrian Fatalities		427	385	410	435	344

*These Performance Measures Were Developed By The National Highway Traffic Safety Administration (NHTSA) and the Governors Highway Safety Association (GHSA) (See Publication: DOT HS 811 025)

**2009 State Vehicle Miles Traveled (VMT) Data is Not Yet Available

***Based on the BAC of All Involved Drivers and Motorcycle Riders (Operators) Only

[Back To The Table of Contents](#)



Fatality Rates: Texas , U.S. and Best State

Year		Fatalities	Total Vehicle Miles Traveled (Millions)	Fatalities Per 100 Million Vehicle Miles Traveled	Total Population	Fatalities Per 100,000 Population
2005	Texas	3,536	235,170	1.50	22,801,920	15.51
	US	43,510	2,989,430	1.46	295,753,151	14.71
	Best State*			0.80		6.83
2006	Texas	3,531	238,256	1.48	23,369,024	15.11
	US	42,708	3,014,371	1.42	298,593,212	14.30
	Best State*			0.78		6.34
2007	Texas	3,466	243,443	1.42	23,837,701	14.54
	US	41,259	3,032,399	1.36	301,579,895	13.68
	Best State*			0.79		6.54
2008	Texas	3,476	235,382	1.48	24,304,290	14.30
	US	37,423	2,973,509	1.26	304,374,846	12.30
	Best State*			0.67		5.56
2009	Texas	3,071			24,782,302	12.39
	US	33,808	2,979,321	1.13	307,006,550	11.01
	Best State*					4.84

*State (or States) With Lowest Rates: Lowest VMT and Population Rates Could Be in Different States

2009 National VMT is a Preliminary Estimate and Subject to Change

2009 State Vehicle Miles Traveled (VMT) Data is Not Yet Available

[Back To The Table of Contents](#)



Fatalities By The Highest Blood Alcohol Concentration (BAC) in the Crash**:
Texas , U.S. and Best State
(Old Definition)

Year		Total Fatalities in all Crashes	Highest BAC level in the Crash					
			BAC = .01+			BAC = .08+		
			Number	Percent	Per 100 Million VMT	Number	Percent	Per 100 Million VMT
2005	Texas	3,536	1,672	47	0.71	1,462	41	0.62
	US	43,510	17,590	40	0.59	15,102	35	0.51
	Best State*			14	0.16		12	0.14
2006	Texas	3,531	1,745	49	0.73	1,540	44	0.65
	US	42,708	17,738	42	0.59	15,144	35	0.50
	Best State*			24	0.26		20	0.22
2007	Texas	3,466	1,672	48	0.69	1,463	42	0.60
	US	41,259	17,158	42	0.57	14,603	35	0.48
	Best State*			24	0.27		21	0.23
2008	Texas	3,476	1,679	48	0.71	1,463	42	0.62
	US	37,423	15,449	41	0.52	13,258	35	0.45
	Best State*			21	0.21		16	0.16
2009	Texas	3,071	1,551	51		1,351	44	
	US	33,808	14,188	42	0.48	12,233	36	0.41
	Best State*			23			18	

*State (or States) With Lowest Percents: Lowest Percents Could Be in Different States

**Based on the BAC of All Involved Drivers, Motorcycle Riders (Operators), Pedalcyclists and Pedestrians

2009 National VMT is a Preliminary Estimate and Subject to Change

2009 State Vehicle Miles Traveled (VMT) Data is Not Yet Available

[Back To The Table of Contents](#)



Alcohol-Impaired Driving Fatalities**:
Texas, U.S. and Best State
(New Definition)

Year		Total Fatalities in all Crashes	Alcohol-Impaired Driving Fatalities (BAC = .08+)		
			Number	Percent	Per 100 Million VMT
2005	Texas	3,536	1,320	37	0.56
	US	43,510	13,582	31	0.45
	Best State*			12	0.13
2006	Texas	3,531	1,400	40	0.59
	US	42,708	13,491	32	0.45
	Best State*			18	0.20
2007	Texas	3,466	1,333	38	0.55
	US	41,259	13,041	32	0.43
	Best State*			19	0.21
2008	Texas	3,476	1,310	38	0.56
	US	37,423	11,711	31	0.39
	Best State*			16	0.16
2009	Texas	3,071	1,235	40	
	US	33,808	10,839	32	0.36
	Best State*			16	

*State (or States) With Lowest Percents: Lowest Percents Could Be in Different States

**Based on the BAC of All Involved Drivers and Motorcycle Riders (Operators) Only

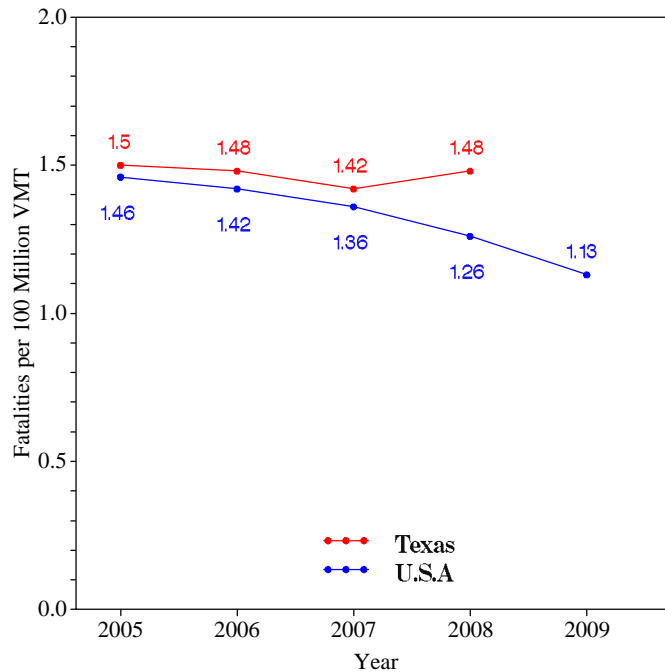
2009 National VMT is a Preliminary Estimate and Subject to Change

2009 State Vehicle Miles Traveled (VMT) Data is Not Yet Available

[Back To The Table of Contents](#)

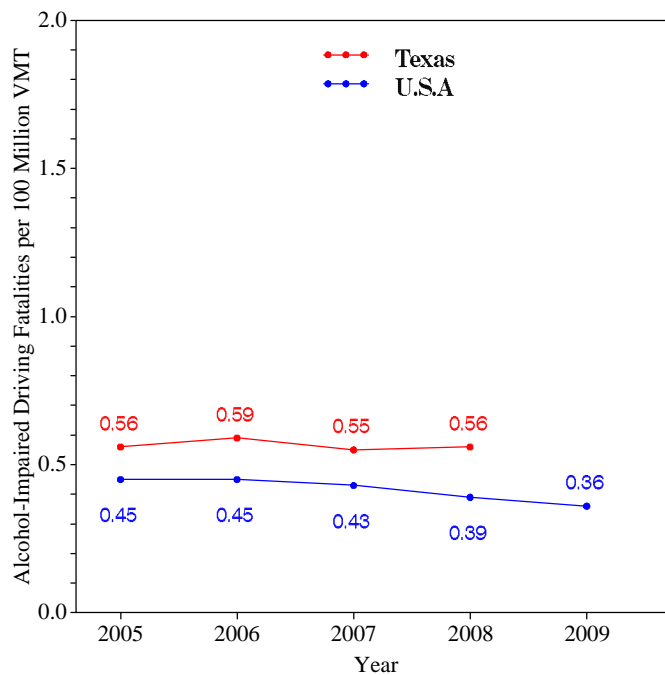


Fatalities per 100 Million VMT



[Back To The Table of Contents](#)

Alcohol-Impaired Driving Fatalities per 100 Million VMT



2009 National VMT is a Preliminary Estimate and Subject to Change
2009 State Vehicle Miles Traveled (VMT) Data is Not Yet Available

[Back To The Table of Contents](#)



**Blood Alcohol Concentration (BAC) Reporting Rates
For Drivers/Motorcycle Riders (Operators)
Involved in Fatal Crashes:
Texas , U.S. and Best State**

Year		Surviving Drivers/Motorcycle Riders			Killed Drivers/Motorcycle Riders			Total Drivers/Motorcycle Riders		
		Total	With Blood Alcohol Concentration (BAC) Results Reported to FARS		Total	With Blood Alcohol Concentration (BAC) Results Reported to FARS		Total	With Blood Alcohol Concentration (BAC) Results Reported to FARS	
			Number	Percent		Number	Percent		Number	Percent
2005	Texas	2,667	549	21	2,107	982	47	4,774	1,531	32
	US	31,729	7,415	23	27,491	18,773	68	59,220	26,188	44
	Best State*			77			98			84
2006	Texas	2,541	433	17	2,200	735	33	4,741	1,168	25
	US	30,498	7,482	25	27,348	18,911	69	57,846	26,393	46
	Best State*			81			99			85
2007	Texas	2,521	328	13	2,197	930	42	4,718	1,258	27
	US	29,449	7,631	26	26,570	19,434	73	56,019	27,065	48
	Best State*			82			100			84
2008	Texas	2,516	460	18	2,192	1,331	61	4,708	1,791	38
	US	26,162	7,656	29	24,254	18,415	76	50,416	26,071	52
	Best State*			81			99			85
2009	Texas	2,142	358	17	2,021	1,207	60	4,163	1,565	38
	US	23,432	6,372	27	21,798	15,505	71	45,230	21,877	48
	Best State*			86			97			90

*State (or States) With Highest Percents: Highest Percents Could Be in Different States

[Back To The Table of Contents](#)



Daytime Front Seat (Outboard Only) Passenger Vehicle Occupants, Aged 5 and Over, by Restraint Use: Fatalities and Observed Texas , U.S. and Best State

Table with 4 columns: Year, Category (Texas, US, Best State*), Fatalities - Restrained** (Percent), and Observed - Restrained*** (Percent). Rows are grouped by year from 2005 to 2009.

*State With Highest Percent. Fatal Crash and Observed Percents Can Be Different States

**Percent Based Only Where Restraint Use Was Known

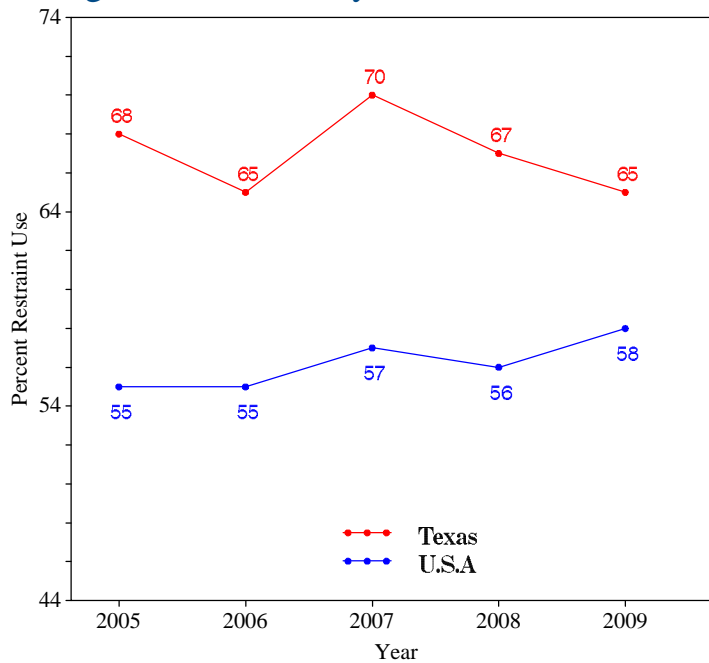
***USA Data: National Occupant Protection Use Survey. Texas Data: State Survey

Note: The Purpose of this Table is to Compare (as closely as possible) the Use of Restraint Systems by Fatally Injured Occupants with Occupants in all Driving Situations

Back To The Table of Contents



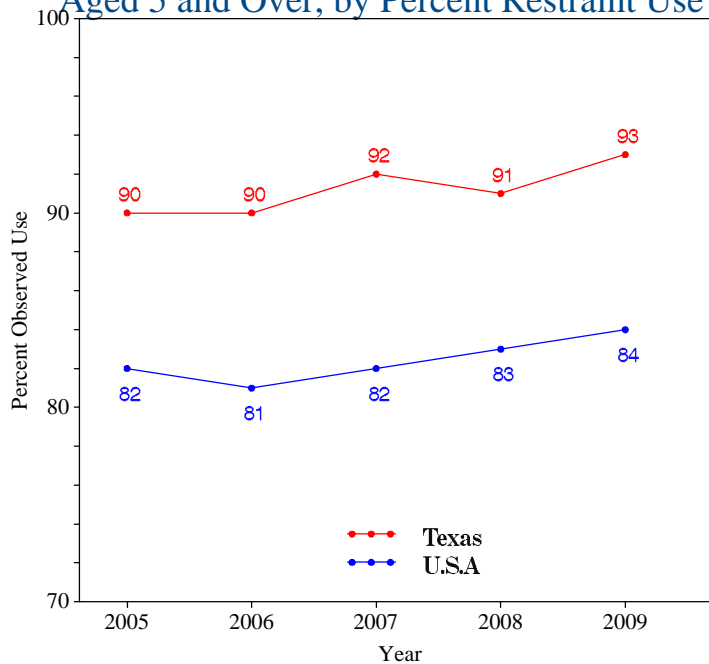
Daytime Front Seat (Outboard Only) Passenger Vehicle Occupant Fatalities, Aged 5 and Over, by Percent Restraint Use*



*Percent Based Only Where Restraint Use Was Known

[Back To The Table of Contents](#)

Daytime Front Seat (Outboard Only) Passenger Vehicle Occupants Observed, Aged 5 and Over, by Percent Restraint Use*



*USA Data: National Occupant Protection Use Survey. Texas Data: State Survey

[Back To The Table of Contents](#)



Passenger Vehicle Occupant Fatalities Age 5 and Above by Restraint Use and Lives Saved Estimates

Year	Fatalities Age 5 and Above					Lives Saved Estimates**	
	Total	Restrained	Unrestrained	Unknown Restraint Use	Percent Known Restrained*	Lives Saved at Current Belt Use	Additional Lives Savable at 100% Belt Usage
2005	2,475	1,254	1,171	50	52	1,563	316
2006	2,550	1,249	1,129	172	53	1,611	376
2007	2,395	1,239	983	173	56	1,622	281
2008	2,264	1,125	962	177	54	1,519	318
2009	2,103	1,015	929	159	52	1,407	223

*Percent Based Only Where Restraint Use Was Known

**Lives Saved Estimates (Sum of columns may not equal other published numbers due to rounding)

[Back To The Table of Contents](#)

Passenger Vehicle Occupant Fatalities Age 4 and Under by Restraint Use and Lives Saved Estimates

Year	Fatalities Age 4 and Under					Lives Saved Estimates**
	Total	Restrained	Unrestrained	Unknown Restraint Use	Percent Known Restrained*	Lives Saved at Current Seat Belt and Child Safety Seat Usage
2005	62	33	29	0	53	45
2006	44	29	15	0	66	41
2007	56	30	24	2	56	43
2008	39	22	15	2	59	31
2009	48	25	17	6	60	41

*Percent Based Only Where Restraint Use Was Known

**Lives Saved Estimates

[Back To The Table of Contents](#)



Motorcyclist Fatalities by Helmet Use and Lives Saved Estimates

Year	Fatalities					Lives Saved Estimates**	
	Total	Helmeted	Unhelmeted	Unknown Helmet Use	Percent Known Helmeted*	Lives Saved at Current Helmet Use	Additional Lives Savable at 100% Helmet Usage
2005	364	146	214	4	41	88	81
2006	353	128	220	5	37	74	82
2007	407	158	239	10	40	94	89
2008	524	194	321	9	38	117	122
2009	426	147	275	4	35	88	104

*Percent Based Only Where Helmet Use Was Known

**Lives Saved Estimates (Sum of columns may not equal other published numbers due to rounding)

[Back To The Table of Contents](#)



Fatalities by Person Type

Person Type		2005		2006		2007		2008		2009	
		#	%*	#	%*	#	%*	#	%*	#	%*
Occupants	Passenger Car	1,270	36	1,256	36	1,197	35	1,133	33	1,021	33
	Light Truck - Pickup	704	20	752	21	706	20	644	19	609	20
	Light Truck - Utility	394	11	460	13	418	12	425	12	433	14
	Light Truck - Van	171	5	129	4	142	4	109	3	92	3
	Light Truck - Other	6	0	4	0	3	0	3	0	0	0
	Large Truck	76	2	90	3	79	2	86	2	58	2
	Bus	24	1	2	0	0	0	20	1	1	0
	Other/Unknown Occupants	31	1	25	1	39	1	31	1	30	1
	Total Occupants	2,676	76	2,718	77	2,584	75	2,451	71	2,244	73
Motorcyclists	Total Motorcyclists	364	10	353	10	407	12	524	15	426	14
Nonoccupants	Pedestrian	427	12	385	11	410	12	435	13	344	11
	Bicyclist and Other Cyclist	47	1	52	1	48	1	53	2	48	2
	Other/Unknown Nonoccupants	22	1	23	1	17	0	13	0	9	0
	Total Nonoccupants	496	14	460	13	475	14	501	14	401	13
Total	Total	3,536	100	3,531	100	3,466	100	3,476	100	3,071	100

*Sum of Percents May Not = 100 Due to Individual Cell Rounding

[Back To The Table of Contents](#)



Fatalities by Crash Type

Crash Type	2005	2006	2007	2008	2009
Total Fatalities (All Crashes)*	3,536	3,531	3,466	3,476	3,071
- (1) Single Vehicle	1,907	1,931	1,841	1,955	1,745
- (2) Involving a Large Truck	506	500	502	453	315
- (3) Involving Speeding	1,439	1,496	1,380	1,455	1,228
- (4) Involving a Rollover	1,067	1,158	1,007	1,045	966
- (5) Involving a Roadway Departure	1,765	1,812	1,778	1,728	1,642
- (6) Involving an Intersection (or Intersection Related)	694	619	675	657	574

(1) Crash Involved Only One Coded Vehicle

(2) Crash Involved at Least One Large Truck

(3) Crash Involved at Least One Vehicle Speeding

(4) Crash Involved at Least One Vehicle That Rolled Over

(5) Crash Involved at Least One Vehicle That Departed the Roadway (FHWA Definition)

(6) Crash Occured Within an Intersection or Within the Approach to an Intersection

*A Fatality Can Be in More Than One Category. Therefore Sum of the Individual Cells Will Not Equal the Total Due to Double Counting

[Back To The Table of Contents](#)



Motorcyclist Fatalities by Age

Year	Age							Total
	<20	20-29	30-39	40-49	50-59	>59	Unknown	
2005	30	104	84	66	51	29	0	364
2006	26	108	65	78	58	18	0	353
2007	17	107	83	101	67	30	2	407
2008	17	144	92	122	102	47	0	524
2009	20	99	90	93	88	35	1	426

[Back To The Table of Contents](#)

Motorcyclist Fatalities Per 100,000 Registered Motorcycles

Year	Motorcyclist Fatalities	Total Motorcycle Registrations*	Motorcyclist Fatalities Per 100,000 Motorcycle Registrations
2005	364	331,213	109.9
2006	353	355,878	99.19
2007	407	387,915	104.9
2008	524	439,145	119.3
2009	426		

*Data Source: FHWA

*2009 Motorcycle Registrations are Not Yet Available

[Back To The Table of Contents](#)



Fatalities by Person Type and Race/Hispanic Origin

Person Type by Race/Hispanic Origin		2005	2006	2007	2008
Occupants (All Vehicle Types)	Hispanic	945	722	142	4
	White Non-Hispanic	1,639	1,436	307	7
	Black, Non-Hispanic	308	252	73	2
	American Indian, Non-Hispanic/Unknown	8	10	0	0
	Asian, Non-Hispanic/Unknown	26	27	4	0
	Pacific Islander, Non-Hispanic/Unknown	1	0	0	0
	Multiple Races, Non-Hispanic/Unknown	1	0	0	0
	All Other Non-Hispanic or Race	29	19	1	18
	Unknown Race and Unknown Hispanic	83	605	2,464	2,944
	<i>Total</i>	3,040	3,071	2,991	2,975
Non-Occupants (Pedestrians, Pedalcyclists and Other/Unknown NonOccupants)					
	Hispanic	169	123	31	0
	White Non-Hispanic	213	153	41	0
	Black, Non-Hispanic	81	59	14	0
	American Indian, Non-Hispanic/Unknown	1	5	0	0
	Asian, Non-Hispanic/Unknown	4	8	2	0
	Pacific Islander, Non-Hispanic/Unknown	0	0	0	0
	Multiple Races, Non-Hispanic/Unknown	0	0	0	0
	All Other Non-Hispanic or Race	10	2	1	0
	Unknown Race and Unknown Hispanic	18	110	386	501
<i>Total</i>	496	460	475	501	
Total	3,536	3,531	3,466	3,476	

2009 Race/Hispanic Origin Data is Not Yet Complete

[Back To The Table of Contents](#)



5 Year Trend For The Top 10 Counties of 2009 - Fatalities

Counties by 2009 Ranking		Fatalities					Percent of Total				
		2005	2006	2007	2008	2009	2005	2006	2007	2008	2009
1	Harris County	388	345	370	363	339	11	10	11	10	11
2	Dallas County	234	225	224	246	160	7	6	6	7	5
3	Bexar County	169	148	140	161	149	5	4	4	5	5
4	Tarrant County	145	165	159	140	134	4	5	5	4	4
5	Travis County	94	103	94	92	94	3	3	3	3	3
6	Montgomery County	64	74	71	67	74	2	2	2	2	2
7	Hidalgo County	92	62	75	75	71	3	2	2	2	2
8	El Paso County	65	44	56	64	70	2	1	2	2	2
9	Smith County	55	53	41	41	47	2	2	1	1	2
10	Collin County	45	38	40	40	43	1	1	1	1	1
Sub Total 1.*	Top Ten Counties	1,367	1,283	1,285	1,308	1,181	39	36	37	38	38
Sub Total 2.**	All Other Counties	2,168	2,248	2,181	2,168	1,890	61	64	63	62	62
Total	All Counties	3,535	3,531	3,466	3,476	3,071	100	100	100	100	100

*This Sub Total is the Total for the Top Ten Counties

**This Sub Total is the Total for all Counties Outside the Top Ten

[Back To The Table of Contents](#)



5 Year Trend For The Top 10 Counties of 2009 - Fatalities Year to Year Percent Change

Counties by 2009 Ranking		Fatalities					Percent Change From Previous Year			
		2005	2006	2007	2008	2009	2006	2007	2008	2009
1	Harris County	388	345	370	363	339	-11	7	-2	-7
2	Dallas County	234	225	224	246	160	-4	-0	10	-35
3	Bexar County	169	148	140	161	149	-12	-5	15	-7
4	Tarrant County	145	165	159	140	134	14	-4	-12	-4
5	Travis County	94	103	94	92	94	10	-9	-2	2
6	Montgomery County	64	74	71	67	74	16	-4	-6	10
7	Hidalgo County	92	62	75	75	71	-33	21	0	-5
8	El Paso County	65	44	56	64	70	-32	27	14	9
9	Smith County	55	53	41	41	47	-4	-23	0	15
10	Collin County	45	38	40	40	43	-16	5	0	8
Sub Total 1.*	Top Ten Counties	1,367	1,283	1,285	1,308	1,181	-6	0	2	-10
Sub Total 2.**	All Other Counties	2,168	2,248	2,181	2,168	1,890	4	-3	-1	-13
Total	All Counties	3,535	3,531	3,466	3,476	3,071	-0	-2	0	-12

*This Sub Total is the Total for the Top Ten Counties

**This Sub Total is the Total for all Counties Outside the Top Ten

[Back To The Table of Contents](#)



5 Year Trend For The Top 10 Counties of 2009 - Fatality Rates

Median Rate for all U.S. Counties: 18.23

Counties by 2009 Ranking		Fatalities Per 100,000 Population				
		2005	2006	2007	2008	2009
1	Kenedy County	461.89	249.38	1,033.59	783.29	813.01
2	King County	0.00	342.47	0.00	0.00	699.30
3	Roberts County	243.31	123.30	118.62	116.82	683.37
4	Glasscock County	158.10	0.00	86.06	82.58	327.60
5	Culberson County	229.80	117.88	281.01	0.00	260.87
6	Oldham County	239.35	383.33	338.33	144.09	236.07
7	Hudspeth County	279.68	279.07	93.69	291.64	192.62
8	Baylor County	0.00	52.18	0.00	53.72	190.37
9	Armstrong County	47.08	0.00	0.00	0.00	145.28
10	Real County	0.00	165.78	132.54	68.33	136.75
	Sub Rate 1.* <i>Top Ten Counties</i>	218.43	250.26	207.11	154.60	242.69
	Sub Rate 2.** <i>All Other Counties</i>	15.31	14.88	14.24	14.07	12.22
	Total Rate <i>All Counties</i>	15.50	15.11	14.54	14.30	12.39

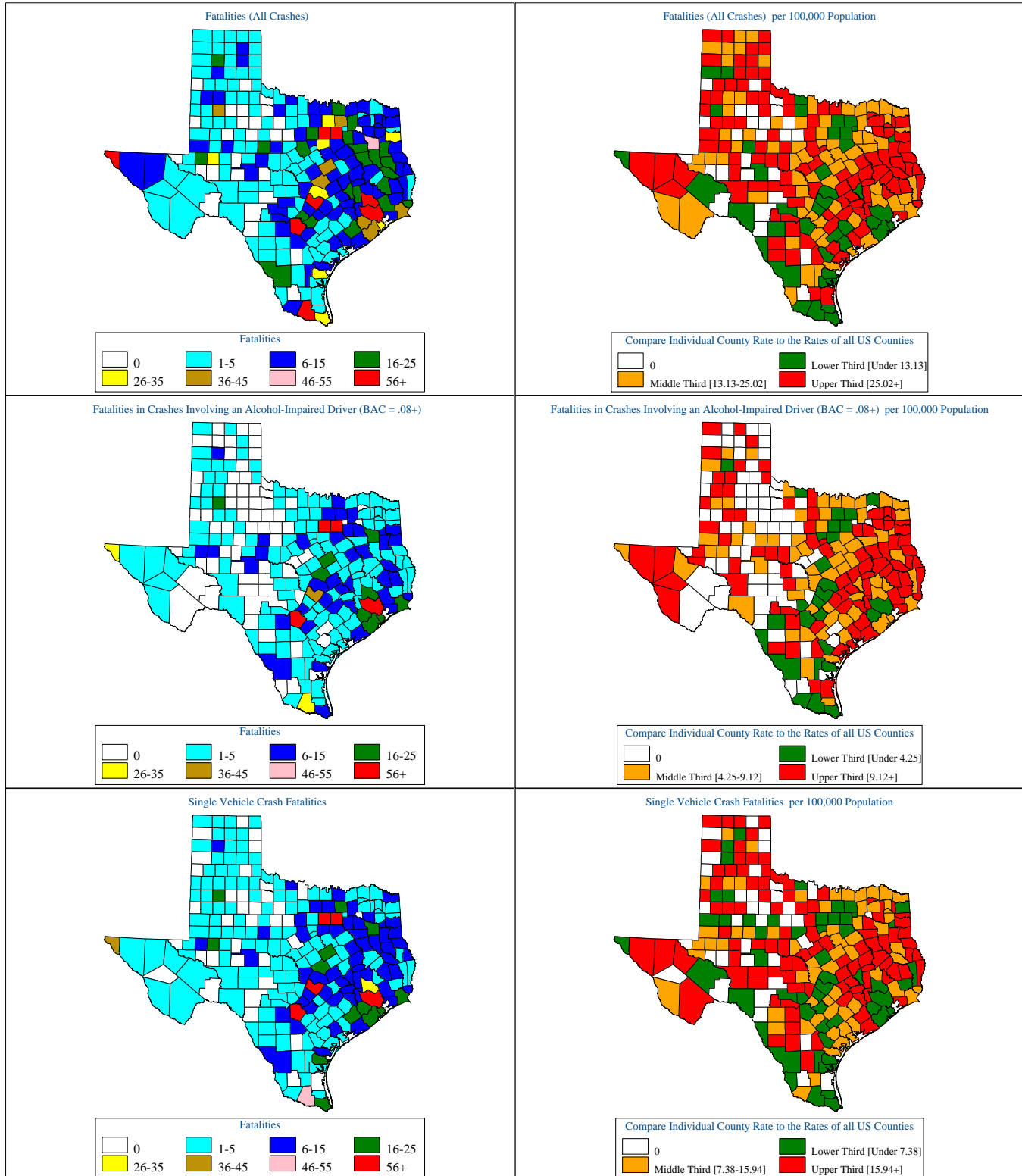
*This Sub Rate is the Rate for the Top Ten Counties

**This Sub Rate is the Rate for all Counties Outside the Top Ten

[Back To The Table of Contents](#)



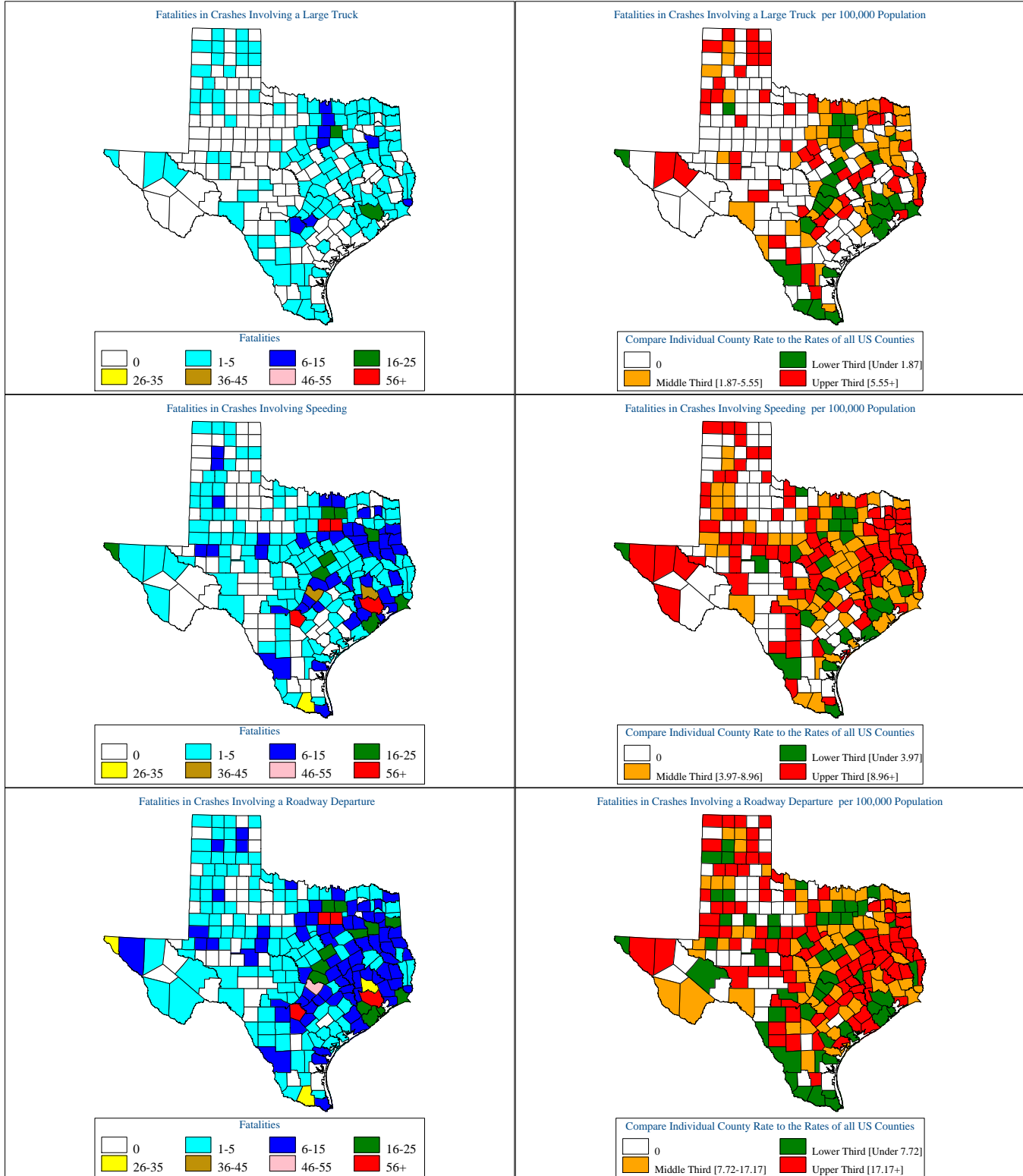
Texas Motor Vehicle Crash Fatality Maps for 2009



[Back To The Table of Contents](#)



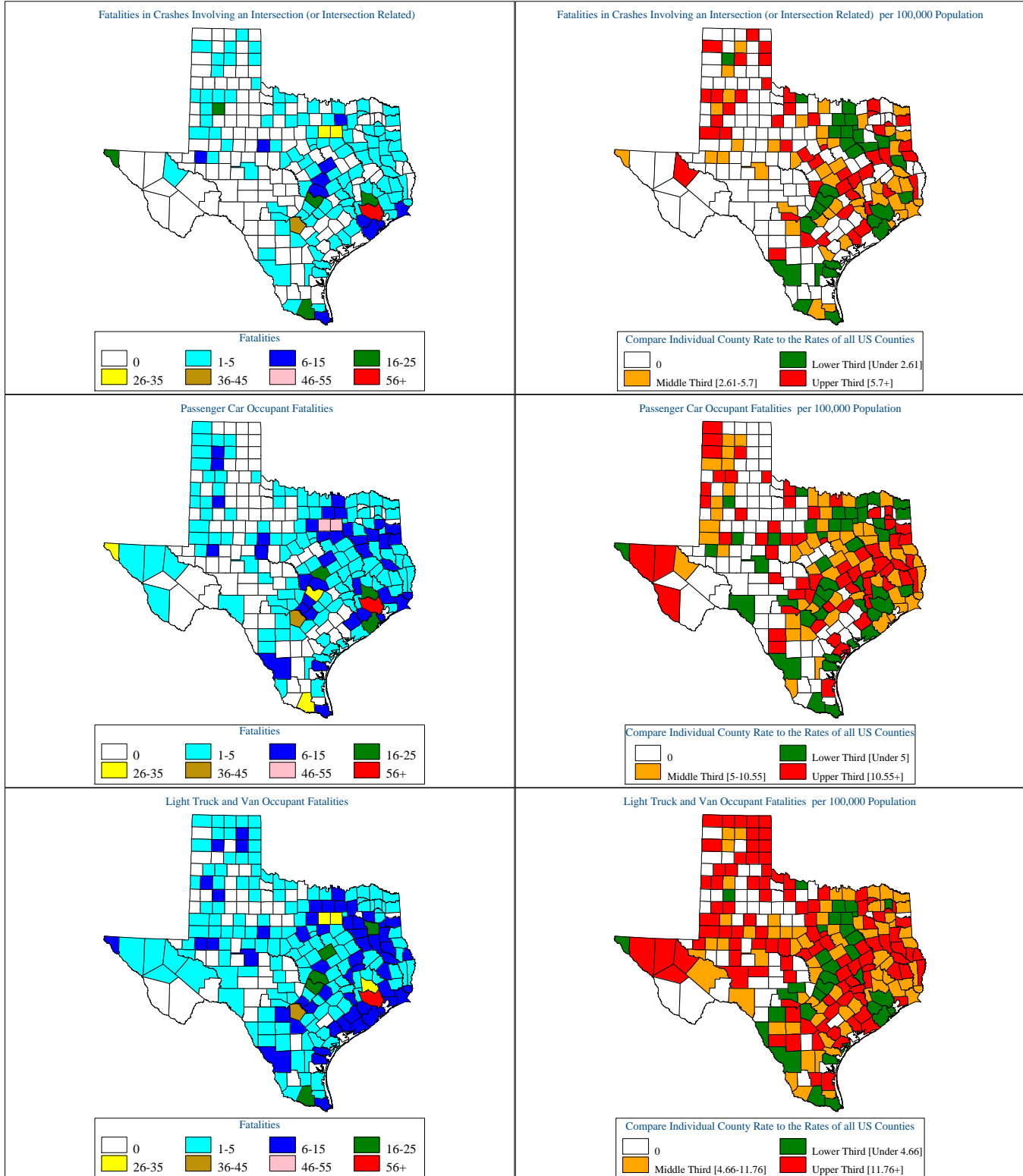
Texas Motor Vehicle Crash Fatality Maps for 2009



[Back To The Table of Contents](#)



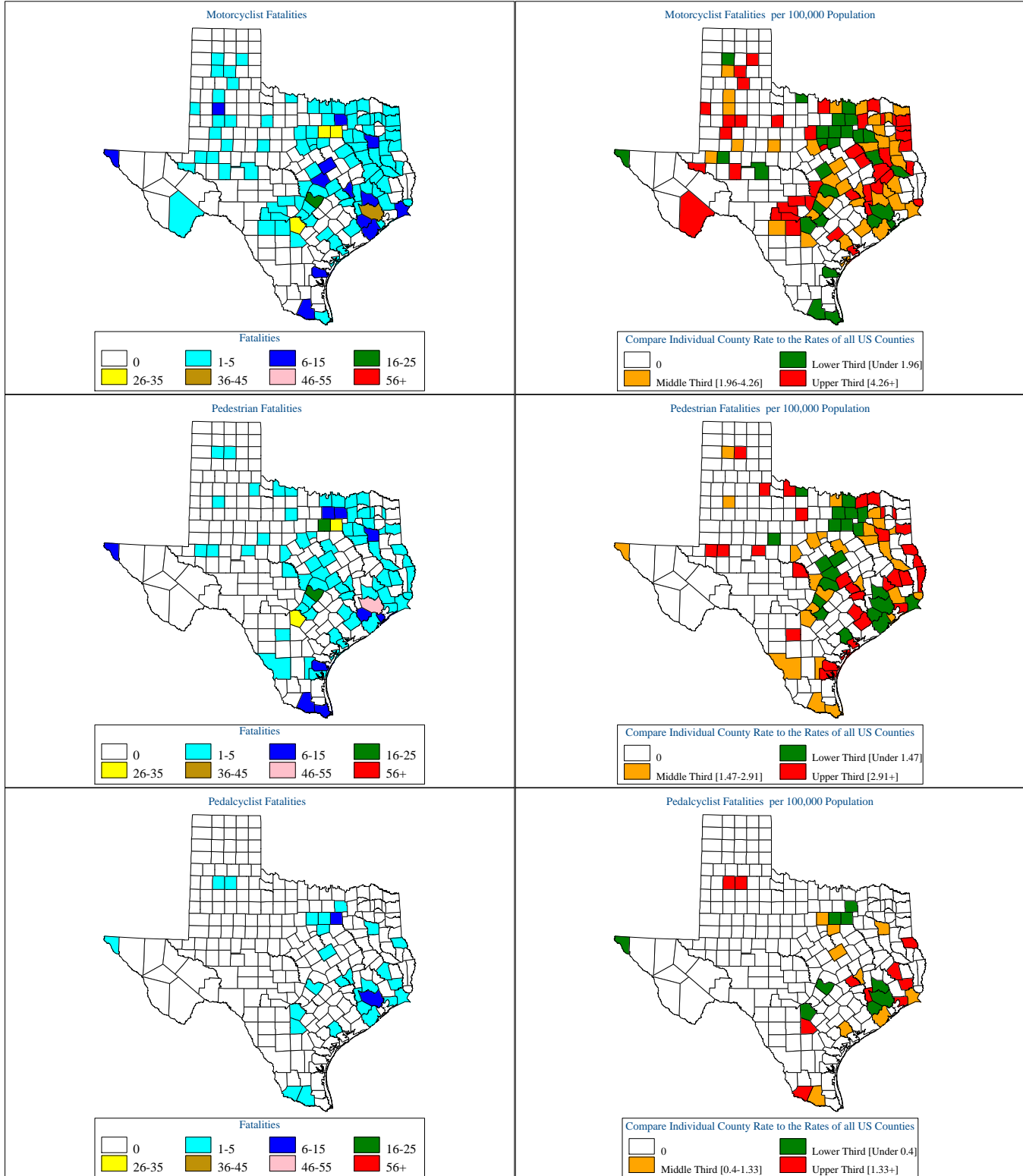
Texas Motor Vehicle Crash Fatality Maps for 2009



[Back To The Table of Contents](#)



Texas Motor Vehicle Crash Fatality Maps for 2009



[Back To The Table of Contents](#)